

TECTUS®

INTERIOR DOOR, EXTERIOR DOOR

TE 525 3D

manufactured of cast stainless steel (304 series) for flush commercial doors

Hinge	up to 120 kg (264 lbs)
--------------	-------------------------------

Technical Data

Load capacity	120 kg (264 lbs)
Length (door/frame)	155/155 mm (6.102/6.102")
Width (door/frame)	26/26 mm (1.024/1.024")
Router bit diameter	24 mm (0.945")

Finish

satin stainless steel

Combinations

Receiver	Commercial frame	Frame mounted
	Casing frame	TE 525 3D FZ/1
	Steel frame	TE 525 3D SZ
	Aluminum frame	according to specifications of the frame manufacturer

Installation Tools

	Universal milling frame
	Drilling jig TE 525 3D
Frame/Door	Template 5 250547 6

Specification Text

SIMONSWERK TECTUS TE 525 3D hinge manufactured of cast stainless steel (304 series). Completely concealed for flush doors with wood, steel or aluminum frames. UL listed for 45 minute rated fire doors, with user-friendly 3-way adjustments, load capacity 120 kg (264 lbs), opening angle up to 180°, overall length 155 mm (6.102"), non-handed, maintenance-free slide bearings, three-dimensionally adjustable: side +/- 3.0 mm (0.118") and height +/- 3.0 mm (0.118"), compression +/- 1.0 mm (0.039"). Finish...

Application Range

Fire Resistance, Smoke Resistance, Soundproof, Forced Entry Resistance, High Corrosion Resistance

Note

The load capacity mentioned above refers to the use of 2 hinges per door leaf (1 x 2 m (39.370 x 78.740")).

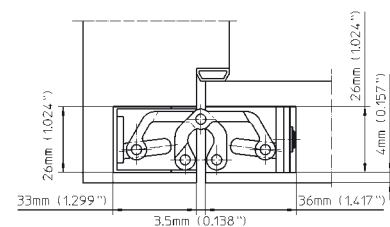
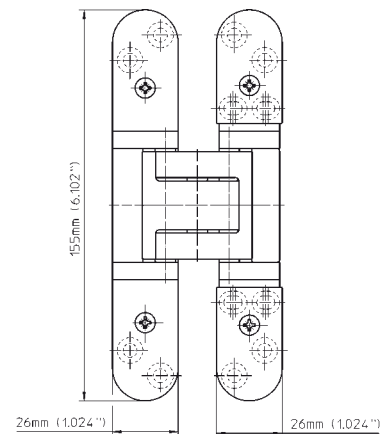
Finger protection due to a small gap between door and frame.

Typical use with door thickness of 44 mm (1 3/4"), but can also be used with higher thicknesses.

Receivers for steel doors upon request.

Templates for collar ring and router bits in inch on request.

For fire rated doors: Check with door manufacturer regarding the usage of additional required intumescent material.





TE 526 3D

manufactured of solid stainless steel (304 series) for flush commercial doors

Hinge	up to 120 kg (264 lbs)
--------------	-------------------------------

Technical Data

Load capacity	120 kg (264 lbs)
Length (door/frame)	155/155 mm (6.102/6.102")
Width (door/frame)	26/26 mm (1.024/1.024")
Router bit diameter	24 mm (0.945")

Finish

satin stainless steel

Combinations

Receiver	Commercial frame	Frame mounted
	Casing frame	TE 525 3D FZ/1
	Steel frame	TE 525 3D SZ
	Aluminum frame	according to specifications of the frame manufacturer

Installation Tools

	Universal milling frame
	Drilling jig TE 525 3D
Frame/Door	Template 5 250547 6

Specification Text

SIMONSWERK TECTUS TE 526 3D hinge manufactured of solid stainless steel (304 series). Completely concealed for flush doors with wood, steel or aluminum frames. With user-friendly 3-way adjustments, load capacity 120 kg (264 lbs), opening angle up to 180°, overall length 155 mm (6.102"), non-handed, maintenance-free slide bearings, three-dimensionally adjustable: side +/- 3.0 mm (0.118") and height +/- 3.0 mm (0.118"), compression +/- 1.0 mm (0.039"). Finish...

Application Range

Fire Resistance, Smoke Resistance, Soundproof, Forced Entry Resistance, High Corrosion Resistance

Note

The load capacity mentioned above refers to the use of 2 hinges per door leaf (1 x 2 m (39.370 x 78.740")).

Finger protection due to a small gap between door and frame.

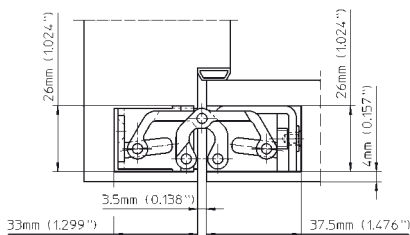
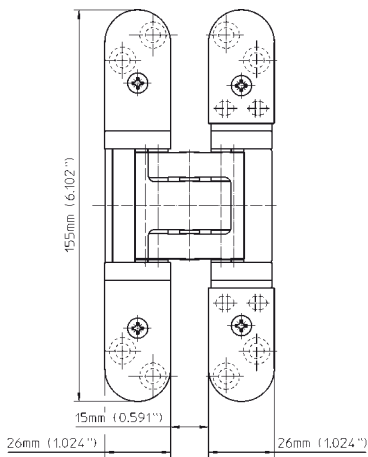
Typical use with door thickness of 44 mm (1 3/4"), but can also be used with higher thicknesses.

Receivers for steel doors upon request.

Templates for collar ring and router bits in inch on request.

For additional technical information regarding TECTUS TE 526 3D Energy see page 17.

For fire rated doors: Check with door manufacturer regarding the usage of additional required intumescent material.



TECTUS®

INTERIOR DOOR, EXTERIOR DOOR

TE 527 3D

manufactured of mild steel for flush commercial doors

Hinge	up to 120 kg (264 lbs)
--------------	-------------------------------

Technical Data

Load capacity	120 kg (264 lbs)
Length (door/frame)	155/155 mm (6.102/6.102")
Width (door/frame)	26/26 mm (1.024/1.024")
Router bit diameter	24 mm (0.945")

Finish

stainless steel look (SSL), other finishes available upon request

Combinations

Receiver	Commercial frame	Frame mounted
	Casing frame	TE 525 3D FZ/1
	Steel frame	TE 525 3D SZ
	Aluminum frame	according to specifications of the frame manufacturer

Installation Tools

	Universal milling frame
	Drilling jig TE 525 3D
Frame/Door	Template 5 250547 6

Specification Text

SIMONSWERK TECTUS TE 527 3D hinge manufactured of mild steel. Completely concealed for flush doors with wood, steel or aluminum frames. With user-friendly 3-way adjustments, load capacity up to 120 kg (264 lbs), opening angle up to 180°, overall length 155 mm (6.102"), non-handed, maintenance-free slide bearings, three-dimensionally adjustable: side +/- 3.0 mm (0.118") and height +/- 3.0 mm (0.118"), compression +/- 1.0 mm (0.039"). Finish...

Application Range

Fire Resistance, Smoke Resistance, Soundproof, Forced Entry Resistance

Note

The load capacity mentioned above refers to the use of 2 hinges per door leaf (1 x 2 m (39.370 x 78.740")).

Finger protection due to a small gap between door and frame.

Typical use with door thickness of 44 mm (1 3/4"), but can also be used with higher thicknesses.

Receivers for steel doors upon request.

Templates for collar ring and router bits in inch on request.

For additional technical information regarding TECTUS TE 527 3D Energy see page 17.

For fire rated doors: Check with door manufacturer regarding the usage of additional required intumescent material.

