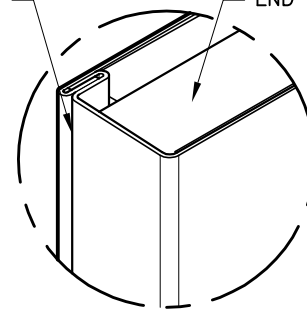


STANDARD VISIBLE FORMED LOCKSEAM DOOR EDGES

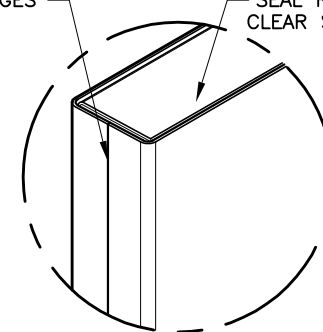
STANDARD RECESSED TOP AND BOTTOM END CHANNELS



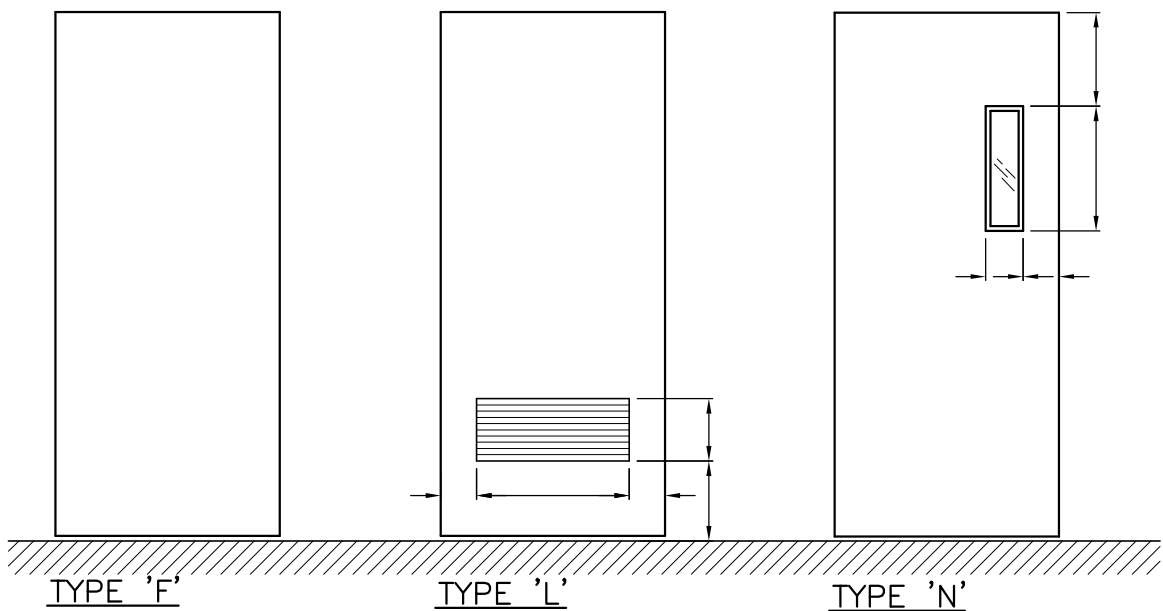
STANDARD LOCKSEAM EDGE & STANDARD END CHANNEL DETAIL

OPTIONAL BUTT FULLY WELDED "SEAMLESS" DOOR EDGES

OPTIONAL CLOSE DOOR ENDS WITH A FLUSH CAP. SEAL RADIUS JOINTS WITH CLEAR SILICONE CAULKING.



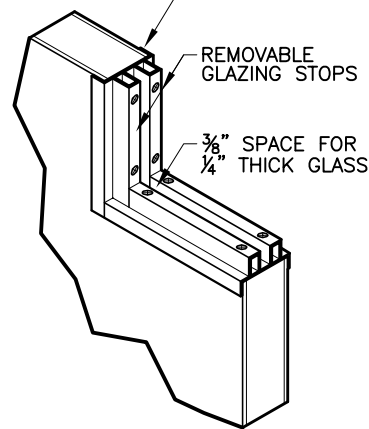
OPTIONAL "SEAMLESS" EDGE & OPTIONAL FLUSH CAP DETAIL



COVER CAP

REMOVABLE GLAZING STOPS

3/8" SPACE FOR 1/4" THICK GLASS



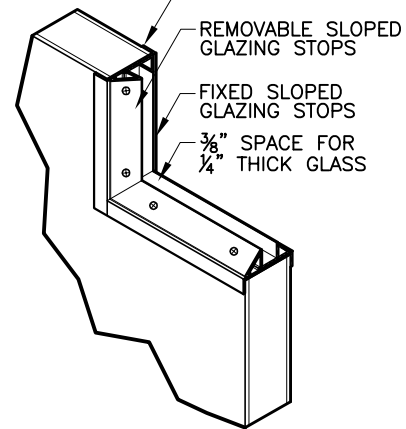
STANDARD GLAZING KIT

COVER CAP

REMOVABLE SLOPED GLAZING STOPS

FIXED SLOPED GLAZING STOPS

3/8" SPACE FOR 1/4" THICK GLASS



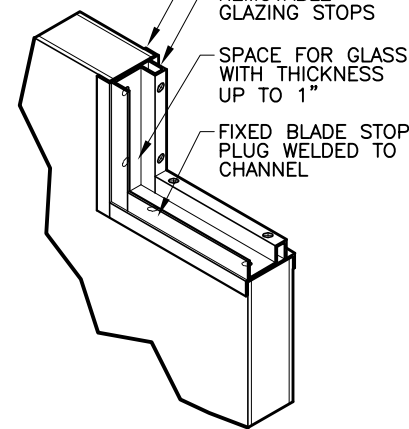
SPECIAL SLOPED GLAZING KIT

COVER CAP

REMOVABLE GLAZING STOPS

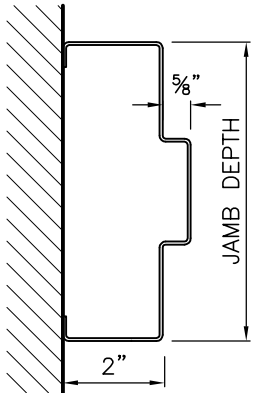
SPACE FOR GLASS WITH THICKNESS UP TO 1"

FIXED BLADE STOP PLUG WELDED TO CHANNEL

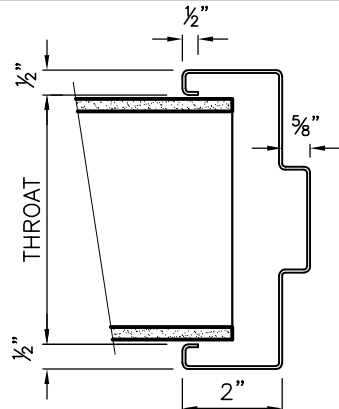


THICK GLASS GLAZING KIT

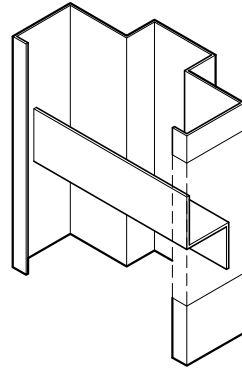
NOTE : GLAZING DIMENSIONS REFER TO DOOR CUT-OUT.



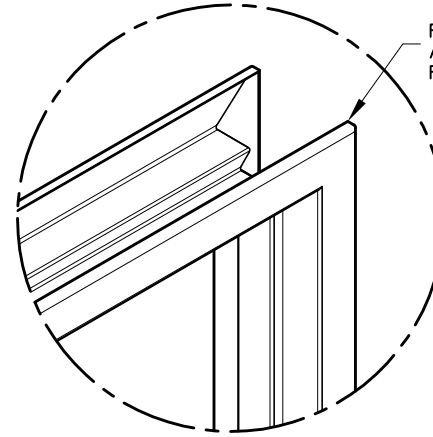
FRAME TYPE 'M'



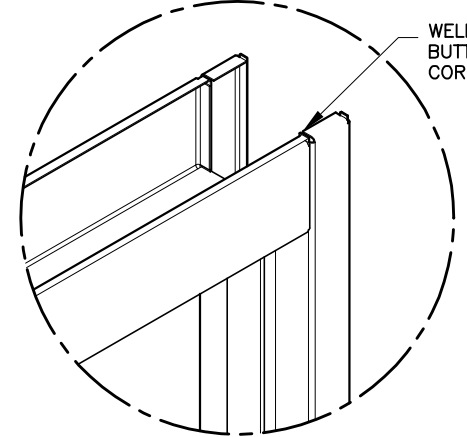
FRAME TYPE 'A'(ITF)



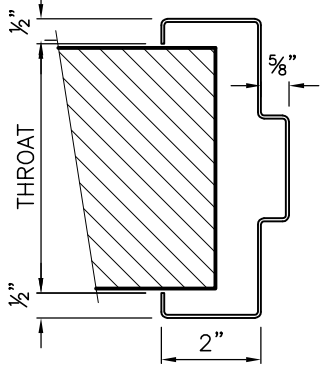
METAL STUD 'Z' ANCHOR



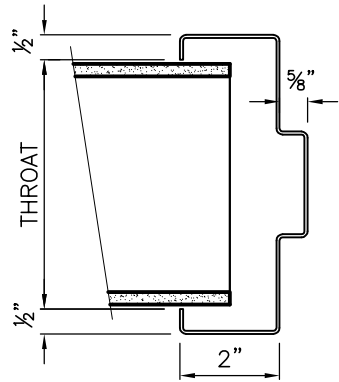
MITERED CORNER DETAIL 'A'



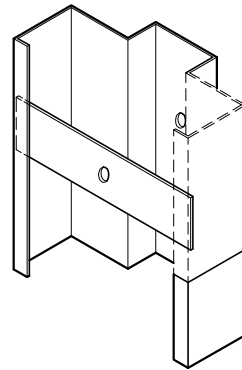
BUTT JOINT CORNER DETAIL 'B'



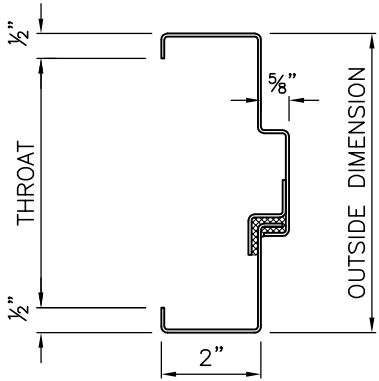
FRAME TYPE 'M' (WRAP)



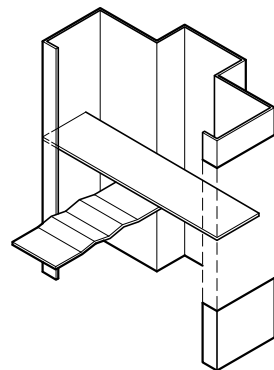
FRAME TYPE 'A'



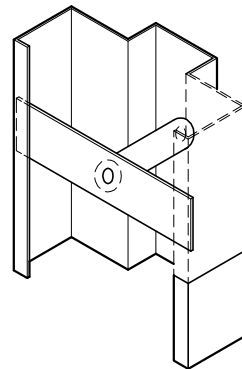
TUBE AND SCREW (T & S)  
(NON-FIRE RATED)



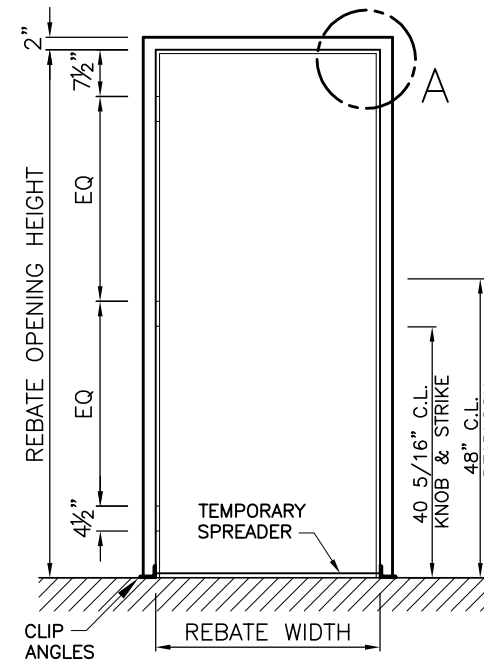
FRAME TYPE 'T.B.' (THERMALLY BROKEN)



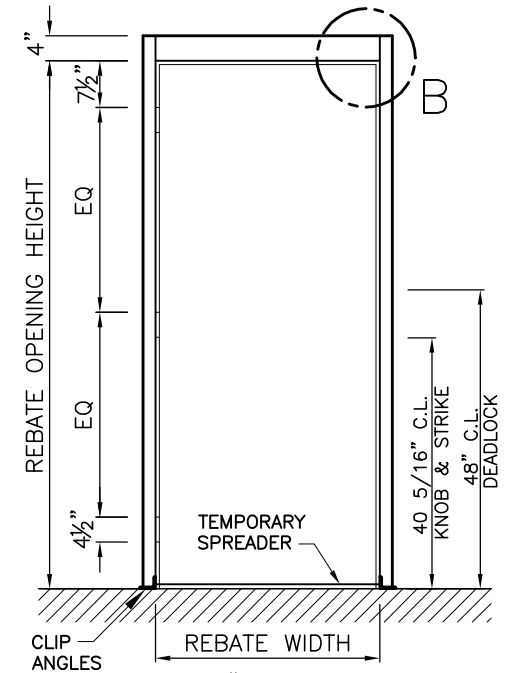
MASONRY 'T' ANCHOR



TUBE AND SCREW (T & S)  
(FIRE RATED)



STANDARD 2" FRAME FACE ELEVATION



STANDARD 4" HEADER FACE  
FRAME ELEVATION