

CROWDERFRAME '2 X 6 WALL' MODIFICATION

INSTRUCTION SHEET

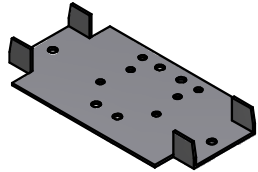
FOR POCKET DOOR KITS INTEGRATED IN 2 X 6 WALL CONSTRUCTION

PARTS LIST

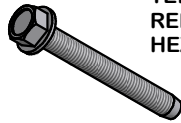
(ADDITIONAL TO PARTS INCLUDED WITH STANDARD POCKET DOOR KIT)



1" X 1-3/8" X 70" PLYWOOD
HEADER SHIMS (2)



2 X 6 FOOT BRACKETS (2)
REPLACES STANDARD
FOOT BRACKETS



1/4" - #14 X 2" HEX
TEK SCREW (4)
REPLACES (4) 3/4"
HEX TEK SCREWS



#10 X 1-1/2"
SELF DRILLING
SCREWS (10)

STEPS 1-9

FOLLOW STEPS FROM STANDARD POCKET DOOR KIT INSTRUCTIONS.
FOR STEP 8 USE 2 X 6 FOOT BRACKETS

BEFORE STEP 10

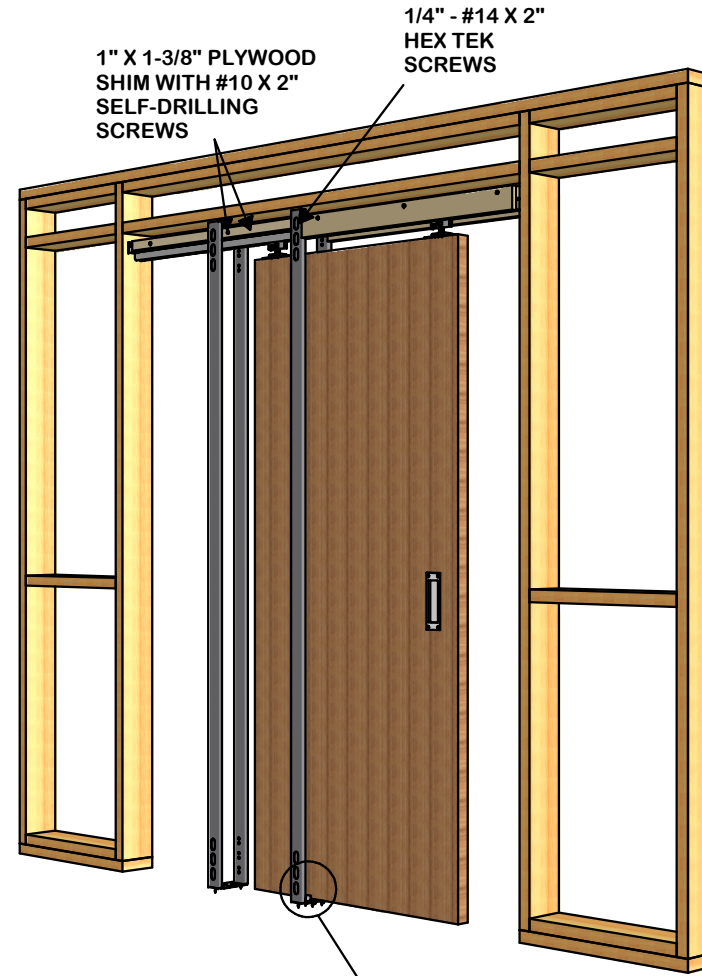
CUT 1" X 1-3/8" PLYWOOD SHIMS TO CORRECT LENGTH IF REQUIRED.
PRE-DRILL 5 HOLES ON THE 1-3/8" FACE OF EACH SHIM WITH 13/64" DRILL BIT. NOTE: PLACE HOLES WHERE THEY WILL NOT INTERFERE WITH THE UPRIGHTS. SCREW SHIMS TO HEADER WITH #10 X 1-1/2" SELF DRILLING SCREWS (10).

STEP 10

POSITION STEEL UPRIGHTS ON FOOT BRACKET WITH LARGE OVAL CLEARANCE HOLES FACING OUT. THE UPRIGHTS ARE PUNCHED SYMETRICALLY AND EITHER END CAN BE UP (OR DOWN). THE ROLLED SEAM ON THE SIDE WALL OF THE UPRIGHT SHOULD FACE THE BACK OF THE POCKET- OTHERWISE IT WILL BE DIFFICULT TO SCREW OPENING TRIM TO THE UPRIGHT. PLUMB THE UPRIGHTS VERTICALLY AND PRE-DRILL 1/4" CLEARANCE HOLE IN THE **PLYWOOD SHIMS ONLY**. SECURE UPRIGHTS TO HEADER WITH 1/4" - #14 X 2" HEX TEK SCREWS (4) AND 5/16" EXTERNAL TOOTH LOCK WASHERS (4).
NOTE: IMPACT DRIVER IS IDEAL FOR THIS STEP OR PRE-DRILL HEADER WITH 9/64" BIT IF DESIRED.

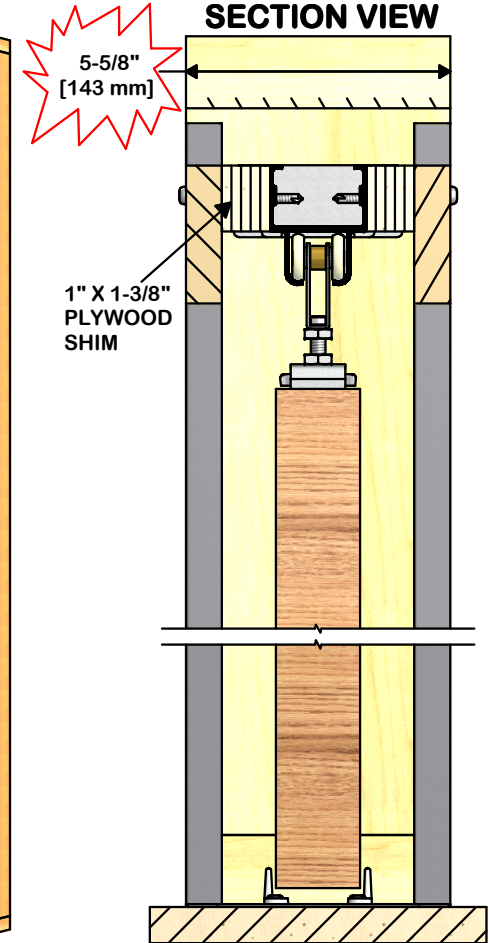
STEPS 11-20

FOLLOW STEPS FROM STANDARD POCKET DOOR KIT INSTRUCTIONS.



2 X 6 FOOT
BRACKETS

2 X 6 WALL CONSTRUCTION POCKET DOOR KIT SECTION VIEW



5-5/8"
[143 mm]
1" X 1-3/8"
PLYWOOD
SHIM



K.N. CROWDER MFG. INC.

1220 BURLOAK DRIVE
BURLINGTON, ONTARIO, CANADA, L7L 6B3
TELEPHONE: 905-315-9788 - FAX: 905-315-8090
TOLL FREE FAX: 1-800-567-0123

K.N. CROWDER INC.

210 EIGHTH STREET SOUTH
LEWISTON, NEW YORK, U.S.A. 14092
TELEPHONE: 1-716-754-8247
TOLL FREE FAX: 1-800-567-0123

WEBSITE: www.kncrowder.com --- E-MAIL: customerservice@kncrowder.com

