

**GENERAL
STORAGE
SYSTEMS**

MEDALLION

FLOOR-BRACED

Toilet Stall

**Installation
Instructions**

GENERAL STORAGE SYSTEMS LTD

2995 PAGE STREET, LONDON, ONTARIO N5V 4P6

PHONE: [519] 453-5910

FAX: [519] 455-0037

CONTENTS

PRE-INSTALLATION INSTRUCTIONS / HORIZONTAL SECTION.....	2
STYLE OF ENCLOSURE - DIMENSION DRAWINGS.....	3
LAYOUT INSTRUCTIONS / BRACKETS AND FLOOR FASTENERS.....	4
SUPPORT BOLTS-POSITION PANELS /	
END PILASTER & HINGE PRE-ASSEMBLY.....	5
FIRST UNIT - INSTALLATION INSTRUCTIONS	6
HANG DOORS, ACCESSORIES.....	7
DOOR ASSEMBLY / LATCH ASSEMBLY.....	8

PRE-INSTALLATION INSTRUCTIONS

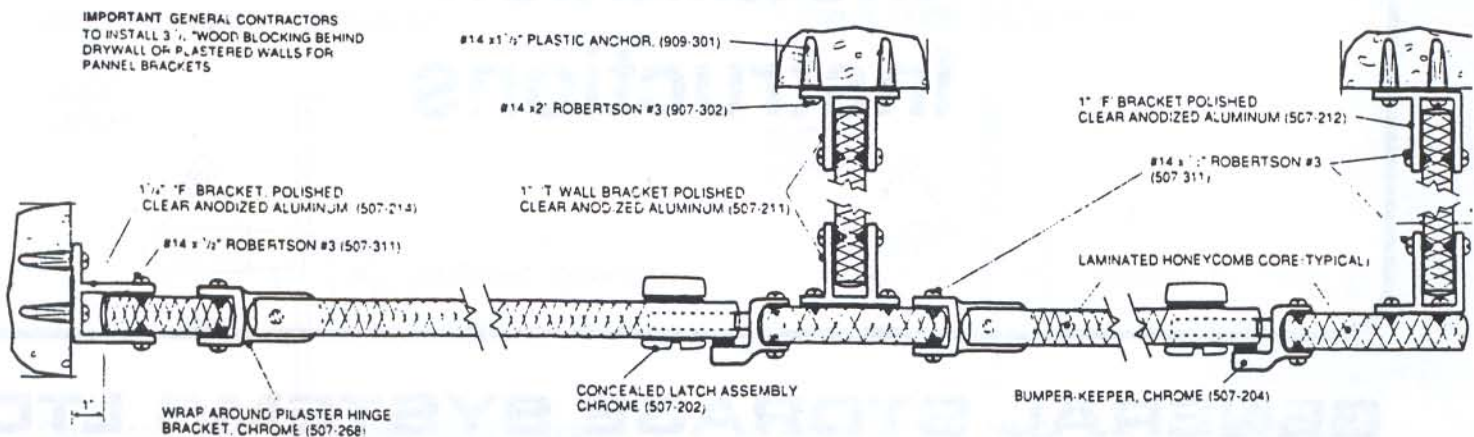
1. **STUDY** carefully all job prints, details, instructions and specifications.

2. **CHECK** and verify all dimensions on job prints with actual job conditions.
Make adjustments as required for risers, drain pipes, radiators, etc., not indicated on shop drawings.

3. **CHECK** level and quality of floor and walls before proceeding with installation.

4. **SORT**, check and distribute all materials.

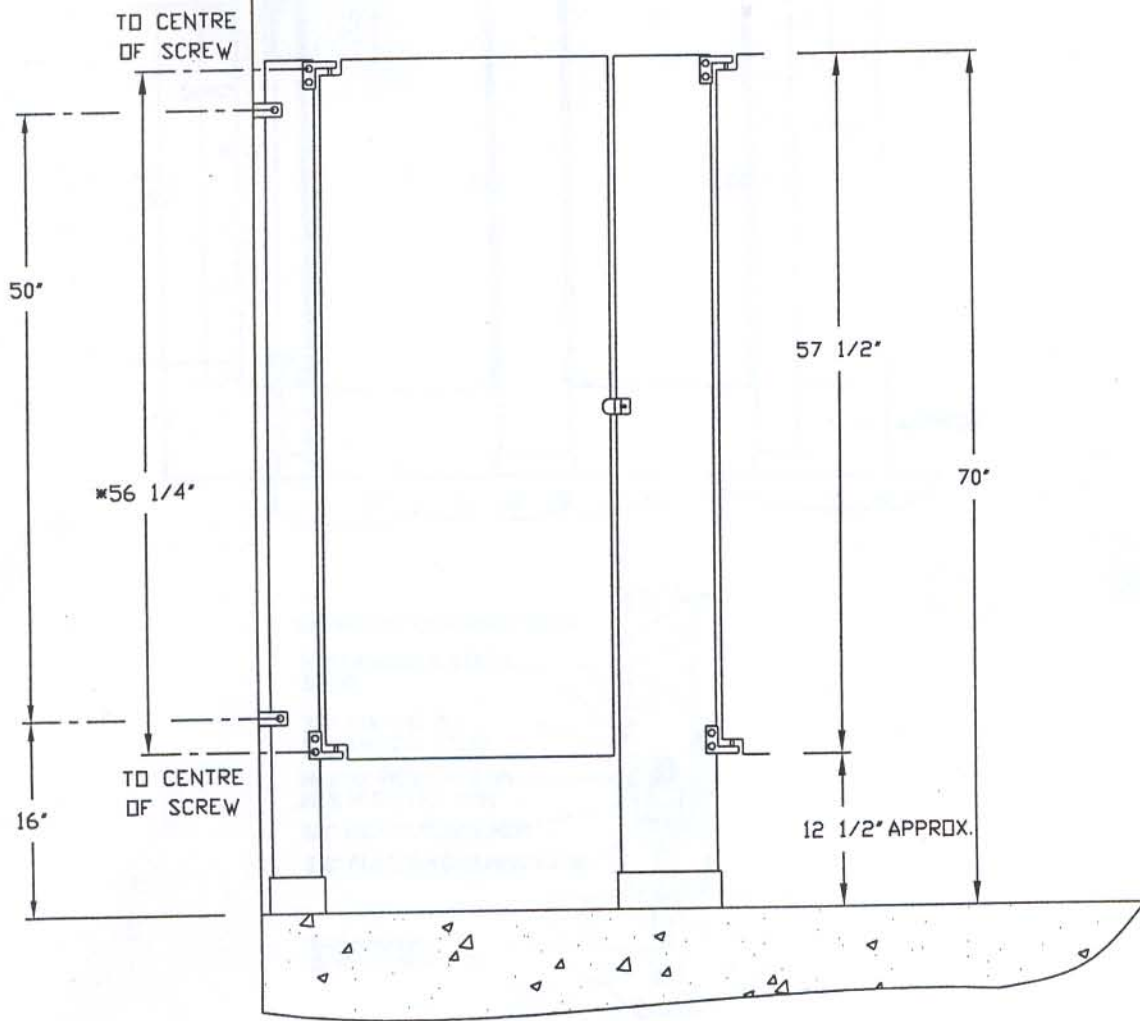
5. **FOR INSTALLATION BETWEEN WALLS** establish mid point and lay out to each side, then equalize any dimensional differences at two end enclosures.
Verify all shop drawing dimensions before proceeding.



HORIZONTAL SECTION

MEDALLION — FLOOR BRACED

* CRITICAL DIMENSION



#8 x 1/2" ROBERTSON
#2 S.M.S. (107-316)

CARRYING CHANNEL 10 GA.

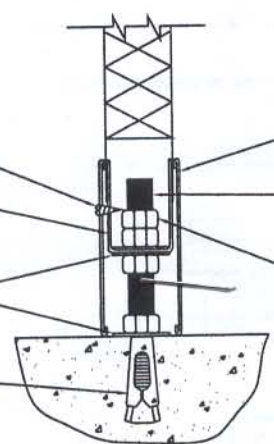
3/8" FLAT WASHER (509-204)

EXPANSION SHIELD (509-302)

3" STAINLESS STEEL SHOE

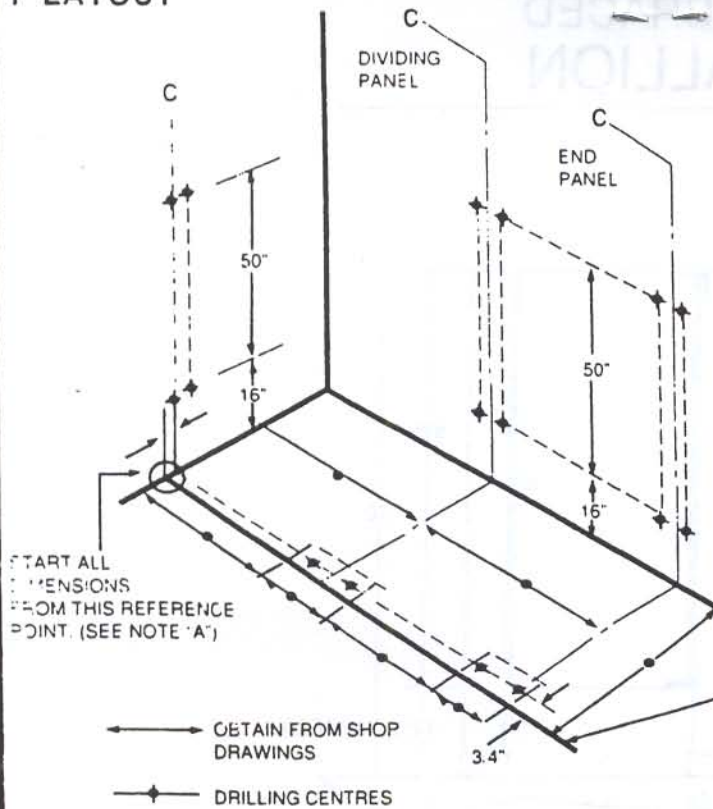
3/8"Ø - 16 T.P.I.
EXPANSION STUD

3/8" HEX NUT (509-303)



**IMPORTANT GENERAL CONTRACTORS
TO INSTALL 3 1/2" WOOD BLOCKING
BEHIND DRYWALL OR PLASTERED
WALLS FOR PANEL BRACKETS**

1 LAYOUT



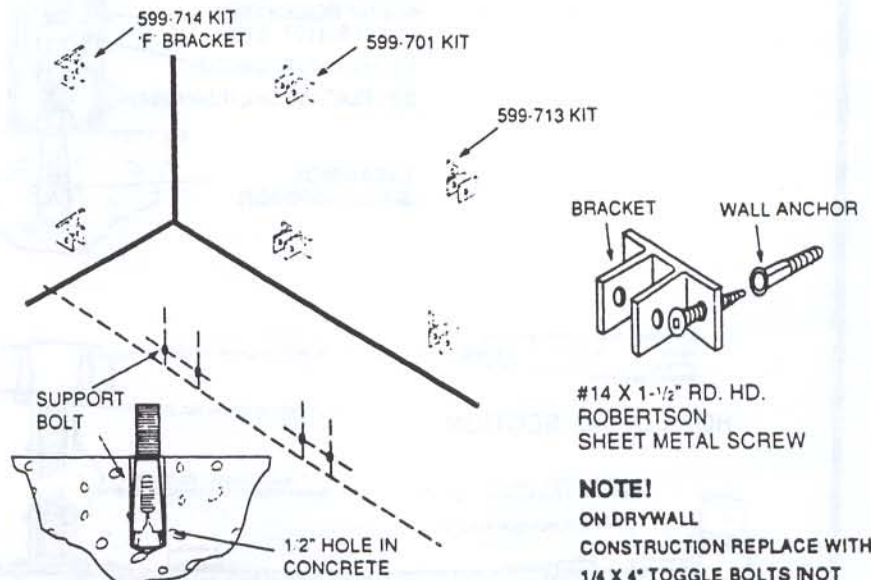
- Establish reference point and layout front line of enclosure on floor. Refer to shop drawings for all dimensions as indicated by legend.
- Mark off outside edges of pilaster. For dimensions refer to shop drawings. Use floor channel as template for drilling floor.
NOTE: Floor channel 1-1/4" less than pilaster width.
- Establish and mark centrelines of all top and bottom wall brackets according to shop drawings and measurements shown. Use brackets as template to establish hole locations on horizontal line.
- Drill 5/16" holes for all wall brackets (use masonry drill). Drill to depth of approx. 1-1/2".
- For support bolts use 1/2" masonry drill.

NOTE

- GENERAL CONTRACTORS TO INSTALL 3-1/2" WOOD BLOCKING BEHIND DRYWALL OR PLASTERED WALLS FOR PANEL BRACKETS.
- RECOMMENDED LOCATIONS OF BRACKETS SHOULD BE VARIED TO TAKE ADVANTAGE OF MORTAR JOINTS.

2 BRACKETS AND FLOOR FASTENERS

- Insert anchors into holes in walls and floor.
- Fasten wall brackets with screws as shown.



NOTE

- SEE CUTAWAY DRAWING ON PAGE 3 FOR BASIC IDEA ON FLOOR ANCHORS.

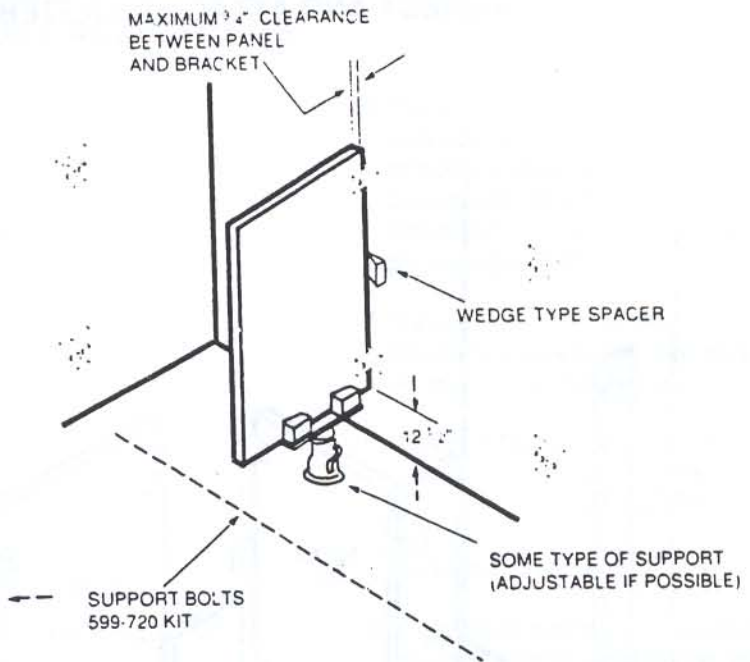
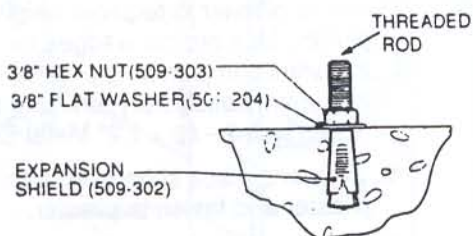
NOTE!

ON DRYWALL CONSTRUCTION REPLACE WITH 1/4 X 4" TOGGLE BOLTS [NOT BY G.S.S.]. IF WOOD BLOCKING NOT IN, PLACE BRACKET TO WALL CONNECTION.

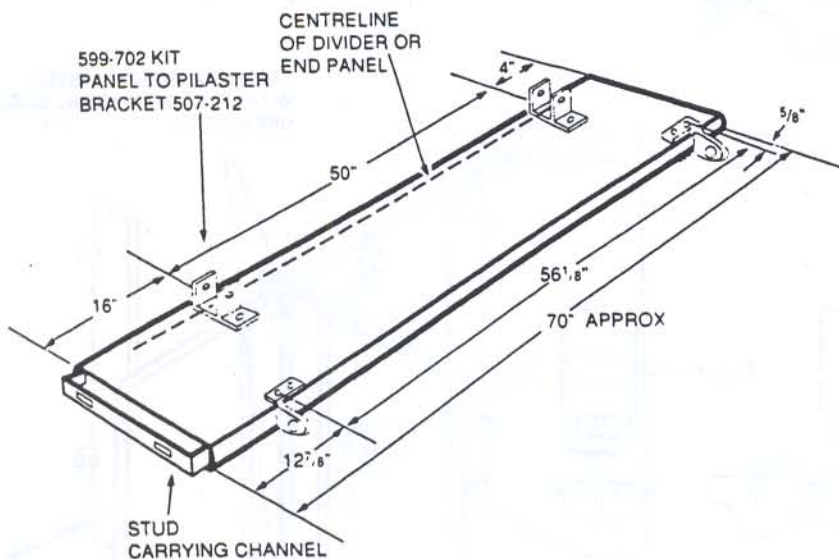
GENERAL
STORAGE
SYSTEMS

3 FASTEN SUPPORT BOLTS - POSITION PANELS

- A. Fasten support bolts into floor as shown.
- B. Use some type of support (adjustable if possible) to hold panel.
- C. Set panel on support and into wall brackets.
- D. Insert wedge type spacer between edge of panel and wall.



4 PILASTER PRE-ASSEMBLY



NOTE!

MAKE SURE THAT THE PANEL TO PILASTER BRACKET CONNECTION CORRESPONDS WITH ANY DIMENSIONAL CHANGES IN WALL LAYOUT-i.e. PRECEDING INSTRUCTIONS 1-2-3
MOUNT FITTINGS TO BACK SIDE OF PILASTER (INSIDE OF COMPARTMENT) WHEN ERECTED

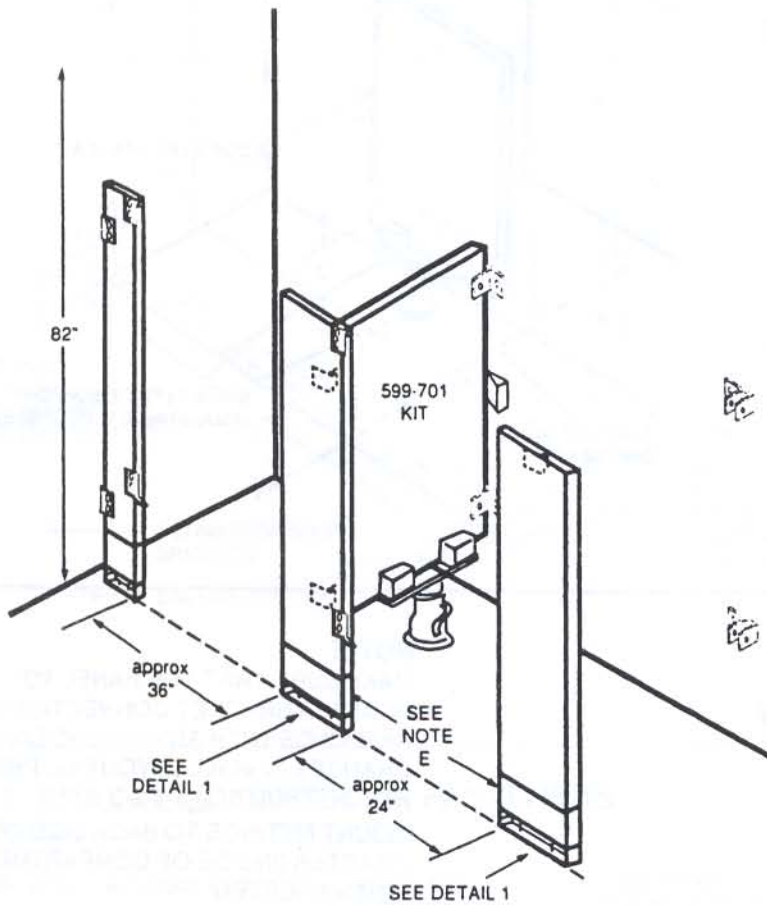
END PILASTER ASSEMBLY

- A. Use brackets as template. Pre-punch and drill through holes in fittings. (Do not drill through both skins). #12 drill
- B. Fasten brackets with #14 x 1/2" Robertson head metal screws.

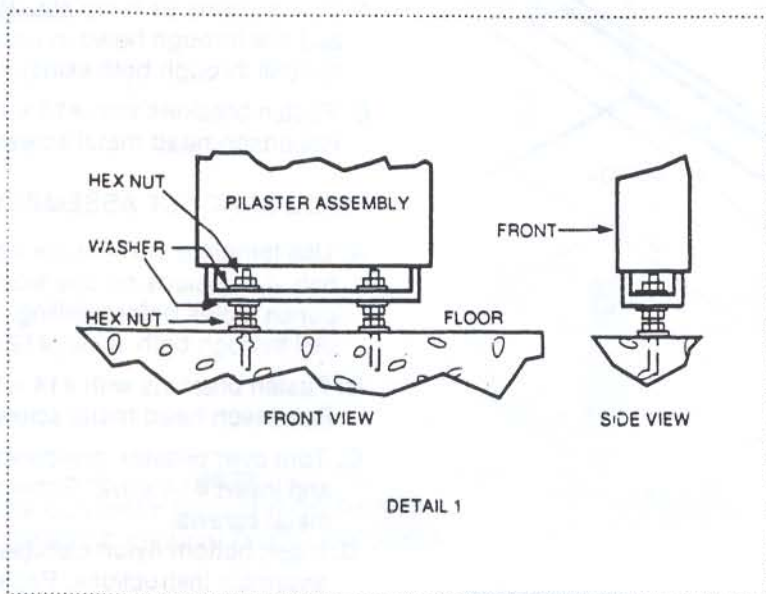
HINGE BRACKET ASSEMBLY

- A. Use template or measure accurately hole dimensions on one side. Pre-punch holes before drilling. (Do not drill through both skins). #12 drill
- B. Fasten brackets with #14 x 1/2" Robertson head metal screws.
- C. Turn over pilaster, pre-punch holes and insert #14 x 1/2" Robertson head metal screws.
- D. Insert bottom nylon cam. (see door assembly instructions, Page 8)

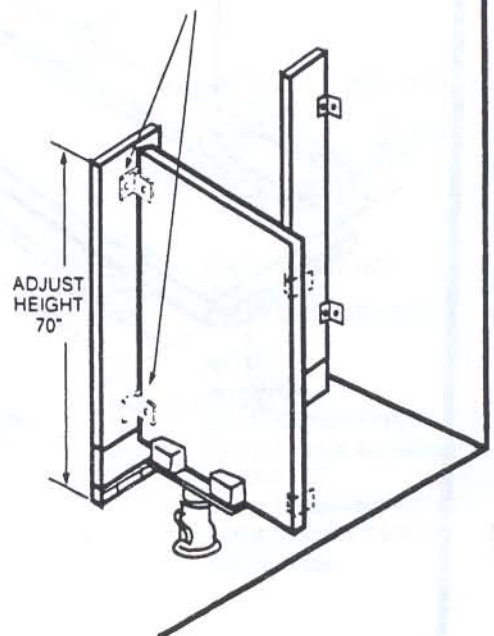
5 ERECT AND ATTACH PILASTERS-FASTEN PANELS



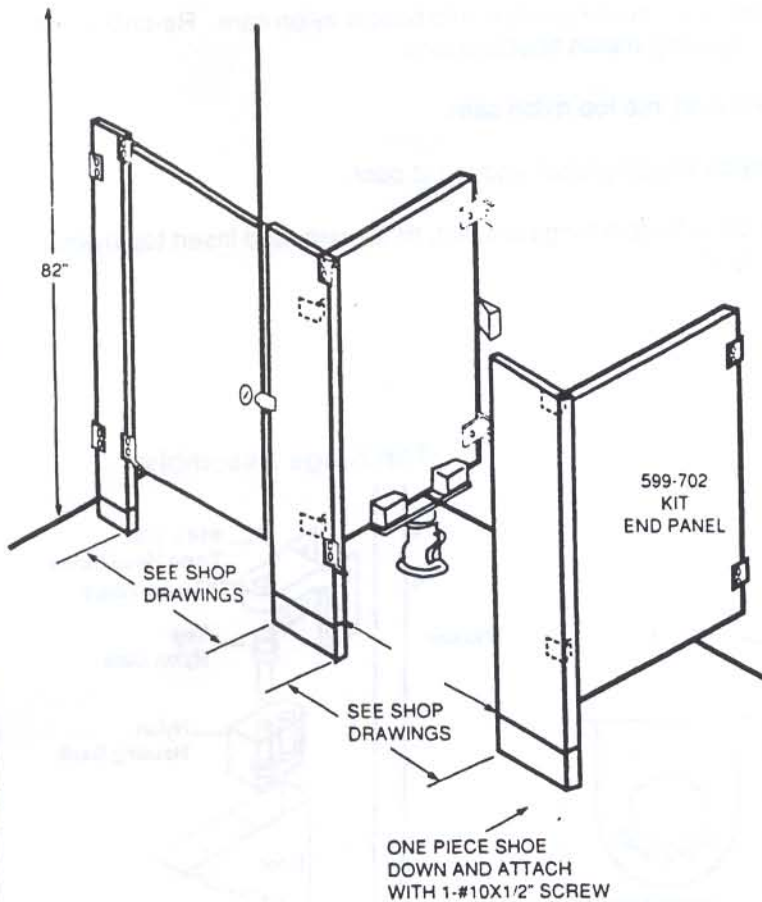
- A. Fasten brackets to pilaster located as per elevation.
- B. Apply one set of hex nuts and washers on support bolts about 7/8" from floor line.
- C. Slide one piece shoe up over bottom of pilaster. Lift and position pilaster pre-assembly over support bolts with channel resting on nuts and fasten lightly with one set of hex nuts and washers.
- D. Adjust pilaster to required height and plumb. Use pre-cut wedges for assistance in plumbing pilaster. When alignment satisfactory, drill and securely fasten with 2 - #8 x 1/2" Metal Screws.
- E. Slide one piece shoe over bottom of pilaster and fasten to pilaster.
- F. Check door opening so pilasters are tight to door.
- G. Plumb and level divider panel with pilaster - fasten to panel brackets only. **DO NOT FASTEN PANEL TO WALL BRACKETS.**



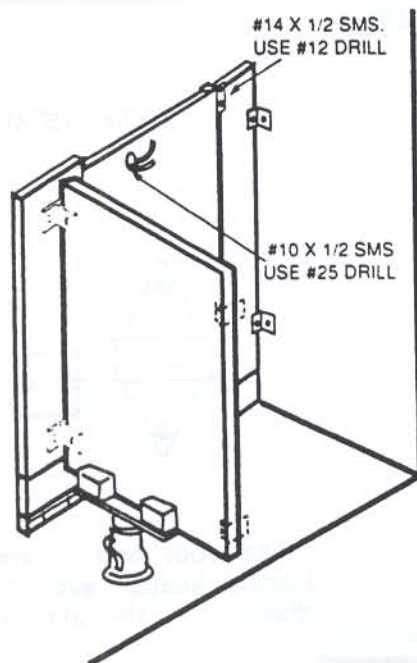
FASTEN PANEL TO PILASTER
WITH #14 X 1/2 P.H. METAL SCREW
USE #12 DRILL



6 HANG DOORS AND INSTALL ACCESSORIES



- A. Hang pre-assembled doors - See operation No. 7 and concealed latch assembly procedure. Make final adjustments for alignment and proper operation of door.
- B. Fasten all panels to wall brackets with screws - Remove all spacers and supports.
- C. Position Bumper-Keeper on pilaster - Align centrally with latch bolt and fasten with #14 x 1/2" sheet metal screw. (Use 3/16" Drill #12)
- D. Tighten all screws and fastening devices. Install accessories as required (paper-holder, etc.). Check entire installation and touch up painted surfaces where required.

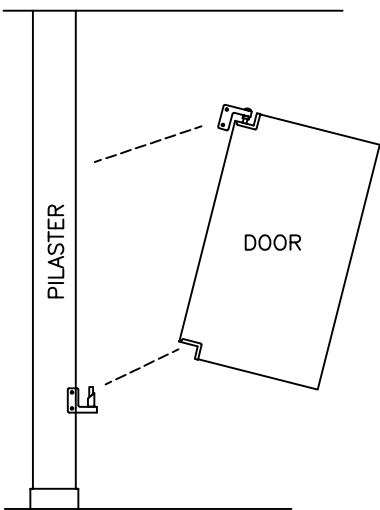


PARTITION MAINTENANCE

G.S.S. Toilet Partitions have a factory baked finish formulated and applied to give durability and lasting resistance to ordinary cleaning, abrasion, scuffing, etc. Normal preventive maintenance will keep these partitions looking beautiful and keep your maintenance costs at a minimum.

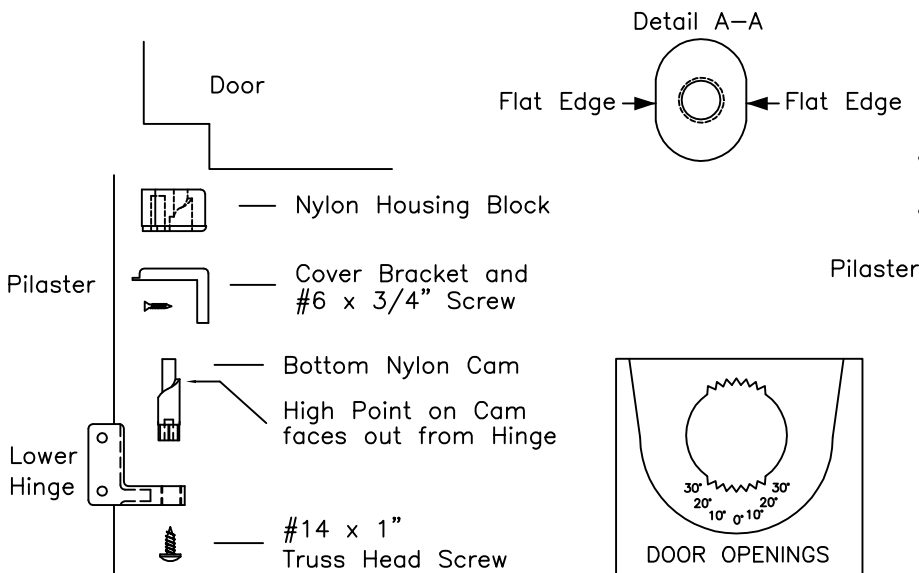
These partitions should be wiped down with a damp, soft cloth periodically. Stubborn dirt should be washed with a mild soap and lukewarm water. When washing is necessary, always use two containers, one with lukewarm water and a mild soap and the other with clear water. Let the soap do the work. Never rub the partitions in one area excessively. Rinse with clear water and wipe down with a clean, soft cloth. Never use harsh detergents or chemical cleaners.

7 – DOOR ASSEMBLY – HANG AND ADJUST

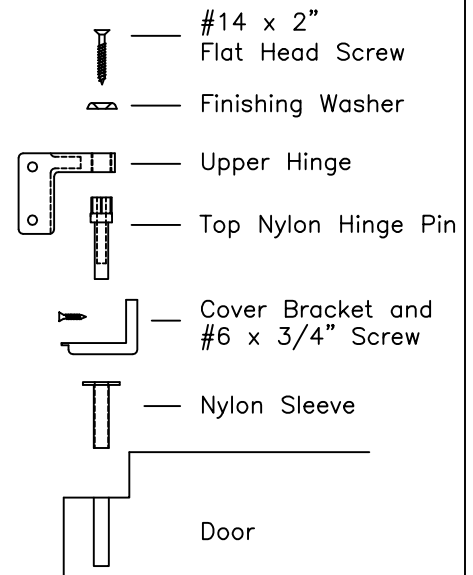


1. Drill holes in Pilaster for Hinge Brackets (See Critical Dimension pg. 3)
2. Place Bottom Nylon Cam into lower Hinge bracket secured with a #14 x 1" Truss Head Screw. Recheck that preset door opening meets specifications. Install Lower Hinge Bracket.
3. Insert Nylon Housing Block into bottom of door. Be sure to bottom out the Nylon Housing Block against the wood within the door.
4. Insert Nylon Sleeve into the wooden hole at the top of the door. Make sure the flat edges on sleeve is parallel to the front and back face of the door (Detail A-A).
5. Install Cover Bracket onto top and bottom of door using a #6 x 3/4" flat socket 'A' zinc screw.
6. Insert Top Nylon Hinge Pin into upper Hinge Bracket from the underside. Insert #14 x 2" Flat Head Screw with Finishing Washer into top of Nylon Hinge Pin from the top side of Hinge Bracket.
7. Insert Top Nylon Hinge Pin into Nylon Sleeve at the top of the door.
8. Position the bottom of the door (Nylon Housing Block) onto Bottom Nylon Cam. Raise door and fasten Upper Hinge Bracket onto Pilaster.

BOTTOM HINGE ASSEMBLY

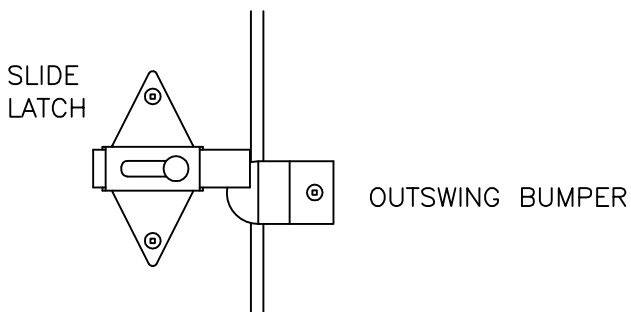


TOP HINGE ASSEMBLY



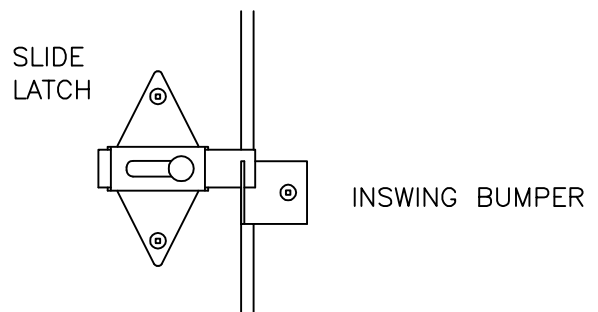
8 – ASSEMBLY OF SURFACE SLIDE LATCH

OUTSWING DOOR INSTALLATION



Close door and locate slide latch keeper. Locate outswing keeper such that when latch bolt is fully thrown, it engages behind the top corner of the bumper, and will clear the top of the bumper when lifted for emergency access.

INSWING DOOR INSTALLATION



Close door and locate slide latch keeper. Locate keeper such that latch bolt disengages the slot when door is lifted.

PRINTED IN CANADA