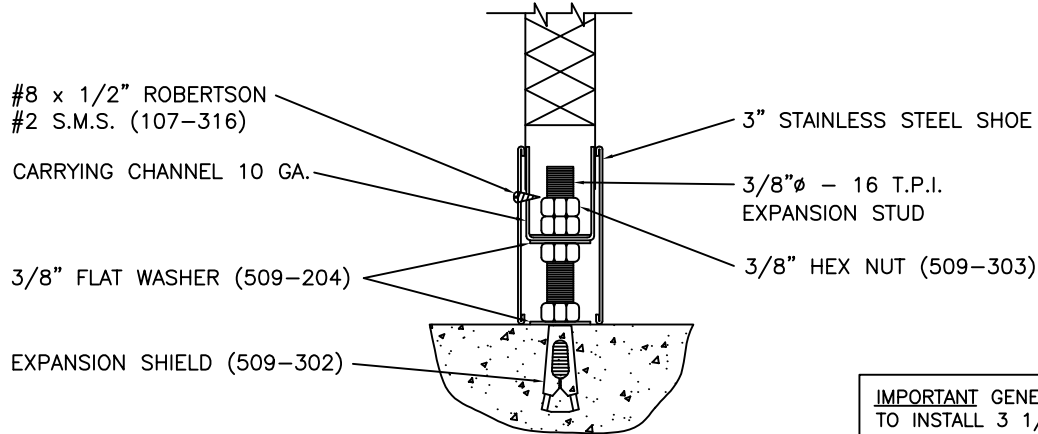
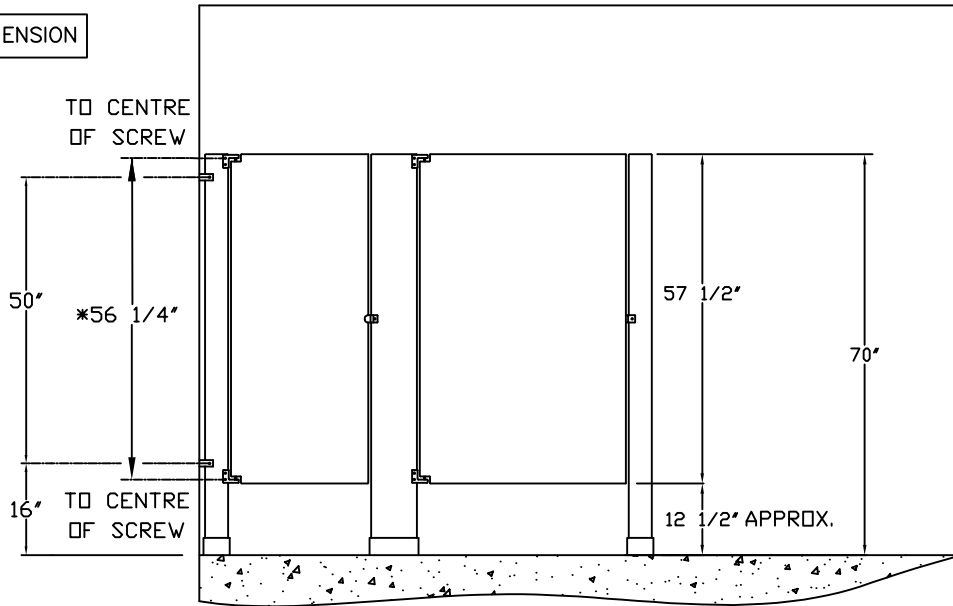
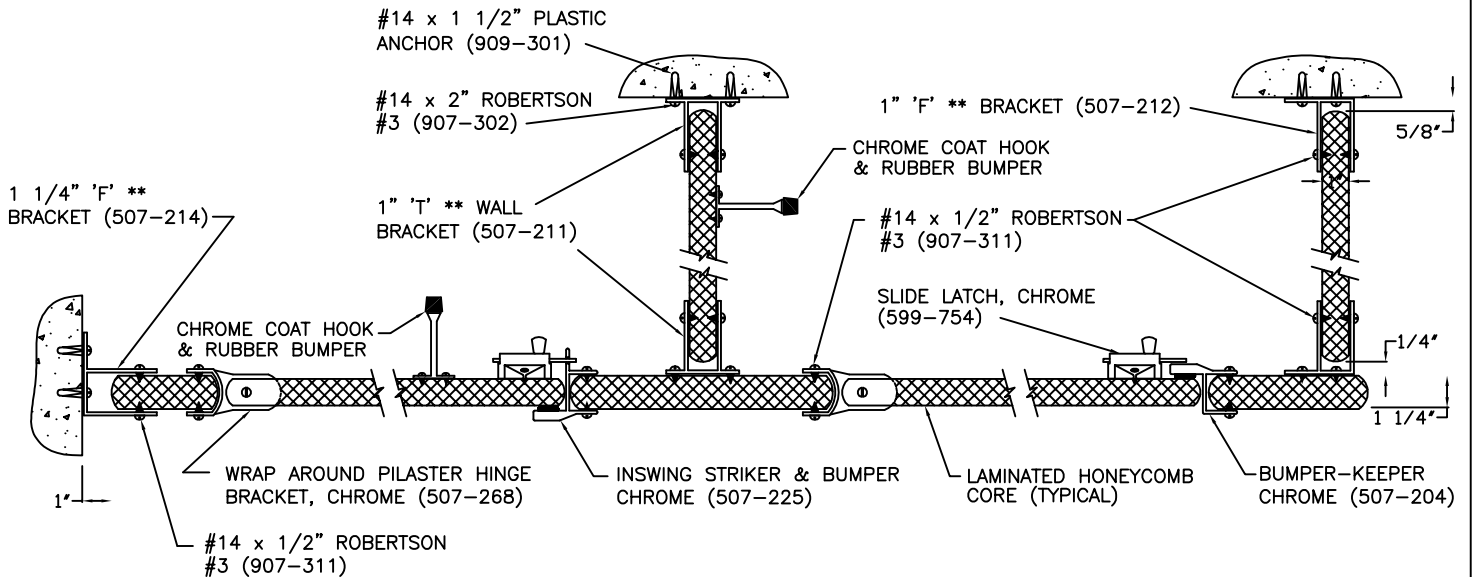


# MEDALLION – FLOOR BRACED

\* CRITICAL DIMENSION



**IMPORTANT GENERAL CONTRACTORS TO INSTALL 3 1/2" WOOD BLOCKING BEHIND DRYWALL OR PLASTERED WALLS FOR PANEL BRACKETS**



## HORIZONTAL SECTION

\*\* POLISHED CLEAR ANODIZED ALUMINUM

# MEDALLION- [FLOOR MOUNTED] SECTION 10100 – METAL TOILET PARTITIONS

## PRODUCT SPECIFICATIONS

### HIGHLIGHTS

GSS Steel Toilet Compartments are available in three styles.

Epic (Headrail Braced)  
Medallion (Floor Mounted)  
Citation (Ceiling Hung)

The strongest standard door on the market.

Every door has an emergency access to the stall.

Hinges are heavy duty chrome plated wrap around non-ferrous alloy castings.

Pilaster and panels are reversible, constructed of galvanized steel formed with snap lock edges with welded corners.

Finished with an abrasion and graffiti resistant, electro statically applied Polymer Powder Coating.

### PRODUCT FEATURES

- The Medallion (Floor Mounted) model is used in Prestige locations.
- Clean modern appearance ideal for office towers, clubs and other quality facilities.
- Secured to the floor through an arc welded 12 gauge steel bracket.

## PART 1: GENERAL

---

### 1.1 RELATED WORK

#### 1.1.1 Toilet and Bath Accessories:

Section 10800

#### 1.1.2 Grab Bars:

Section 10800

### 1.2 WORK INCLUDED

#### 1.2.1 General Requirements:

Comply with general requirements and all documents referred to therein.

#### 1.2.2 Supply and Install:

Provide all labor, materials, equipment and services to supply and install Metal Toilet Partitions indicated on the drawings and/or specified herein.

### 1.3 QUALIFICATIONS

1.3.1 Subject to compliance with the specifications, the following Metal Toilet Partitions will be acceptable:

#### GSS MEDALLION [Floor Mounted]

1.3.2 Alternate manufacturers must adhere to these specifications.

### 1.4 SUBMITTALS

#### 1.4.1 Drawings:

Provide shop drawings clearly indicating the material being supplied and showing all gauges according to the enclosed specification.

#### 1.4.2 Installation Instructions:

Provide all necessary instructions where Metal Toilet Partitions are to be attached to walls and floor.

#### 1.4.3 Sample Toilet Partitions:

The Architect reserves the right to request sample Metal Toilet Partitions for inspection for any alternates to specification.

## PART 2: PRODUCTS

---

### 2.1 MATERIALS AND PRODUCTS

#### 2.1.1 Sheet Steel:

Commercial quality to ASTM A653/A653M with Z275 designation zinc coating.

#### 2.1.2 Steel Thickness:

Minimum base steel thickness

2.1.2.1 Panels and doors 22 gauge (.75 mm) **Galvanized**

2.1.2.2 Pilasters: 20 gauge (.9 mm) **Galvanized**

2.1.2.3 Stainless Steel Sheet ASTM A167 type 304

2.1.2.4 Pilaster Shoes: 75 mm (3") #430 stainless with #4 Polish

#### 2.1.3 Hardware:

2.1.3.1 Hinges: Heavy duty chrome plated Wrap Around non-ferrous alloy castings.

2.1.3.2 Latching: Chrome plated non-ferrous slide bolt type with combination door stop and keeper.

2.1.3.3 Wall and connecting brackets: Heavy duty extruded aluminum alloy, brightened and polished or heavy duty chromium plated die-cast ZAMAC.

2.1.3.4 Coat Hook: Combination hook and door bumper, chrome plated non-ferrous casting.

# PRODUCT SPECIFICATIONS

---

## 2.2 FABRICATION

### 2.2.1 Doors:

Doors shall be 57 ½" (1460 mm) high x 1" (25 mm) thick with a 4" x 57" Solid Particle Board Reinforcement down the full length of the door on the hinge side, plus a 3" x 34" solid piece of structural honeycomb next to the particle board. A 6" x 12" Solid Piece of Particle Board Reinforcement is located where the slide latch is to be positioned. The remainder of the door will be filled with a honeycomb core. All the reinforcement shall be bonded under pressure using waterproof adhesive between the 22 gauge (.75 mm)

**Galvanneal** steel sheets formed to interlock with each other. The overlapping steel edges shall be mitered and welded at the corners.

### 2.2.2 Dividing Panels:

Dividing Panels shall be 57½" (1460 mm) high x 1" (25 mm) thick constructed of a honeycomb core bonded under pressure using waterproof adhesive between the 22 gauge (.75 mm) **Galvanneal** steel sheets formed to interlock with each other. The overlapping steel edges shall be mitered and welded at the corners.

### 2.2.3 Pilasters:

Pilasters shall be 70" (1780 mm) high x 1¼" (30 mm) thick and shall be constructed of a honeycomb core, bonded under pressure between two 20 gauge (.9 mm) **Galvanneal** steel sheets formed to interlock with each other.

### 2.3.4 Finish:

All **Galvanneal** steel surfaces shall be pretreated with an iron phosphate corrosion inhibitor and finished with an abrasion and graffiti resistant **Polymer Powder Coating** cured to ensure a tough and durable finish. Color shall be selected from the Manufacturer's standard color chart.

## PART 3: EXECUTION

### 3.1 PARTITIONS INSTALLATION

**3.1.1** Examine surfaces to receive the work of this Section and proceed only if conditions are satisfactory.

**3.1.2** Install partitions secure, plumb and square.

**3.1.3** Leave ½" (12.7 mm) between wall and panel or end pilaster.

**3.1.4** Fix pilaster shoes in positions to mask pilaster fasteners.

**3.1.5** Install and adjust doors for correct setting and operation.