



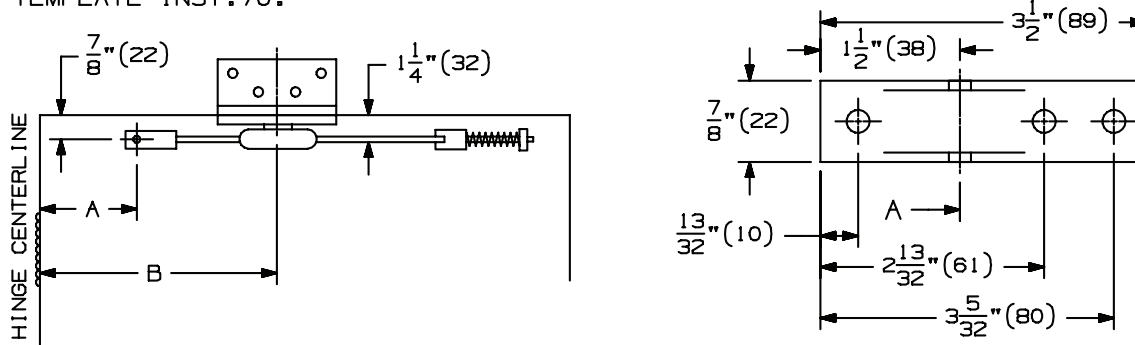
INST.70J

Surface Overhead Holder Angle Bracket (Push Side)

Installation Instructions

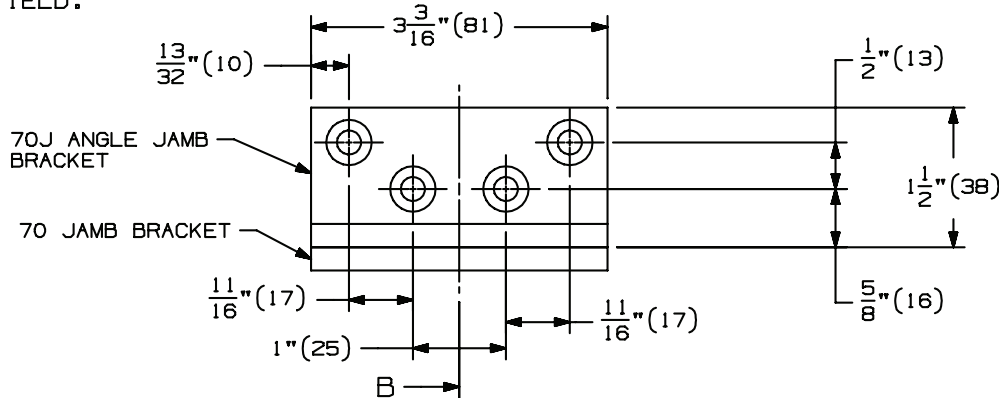
OVERHEAD HOLDER OR STOPS MUST BE INSTALLED BEFORE CLOSERS.

- 1. A. FOLLOW STEP 1 FROM THE 70 SERIES SURFACE OVERHEAD HOLDER INSTALLATION TEMPLATE INST.70.



DOOR BRACKET 70 SERIES

- 2. A. LOCATE "B" DIMENSION ON THE FACE OF THE FRAME OR ON THE FLUSH TRANSOM PANEL. NOTE THAT THE "B" DIMENSION IS MEASURED FROM THE CENTERLINE OF THE HINGE AS SHOWN.
- B. FOR METAL FRAMES, USE A #7 DRILL AND 1/4"-20 TAP IN 4 PLACES. FOR WOOD FRAMES, DRILL 3/16" PILOT HOLES IN 4 PLACES. MOUNTING HOLES SHOULD BE PREPARED IN THE FIELD.



- 3. A. FOLLOW STEP 3 FROM THE 70 SERIES OVERHEAD SURFACE HOLDER INSTALLATION TEMPLATE INST.70
- 4. A. INSTALL ANGLE BRACKET ONTO STANDARD JAMB BRACKET WITH 1/4"-20 X 1/2" FPHMS PROVIDED WITH THE ANGLE BRACKET.
- B. INSTALL THE DOOR BRACKET ON THE DOOR.
- C. INSTALL THE ANGLE BRACKET TO THE FACE OF THE FRAME OR THE TRANSOM PANEL.

SCREW DETAILS

| | QTY | WOOD | METAL |
|-------|-----|------------------------|------------------------|
| ANGLE | 4 | 1/4"-20 X 1/2" FPHMS | 1/4"-20 X 1/2" FPHMS |
| JAMB | 4 | #14 X 1 1/2" FPHSMS | 1/4"-20 X 3/4" FPHMS |
| DOOR | 2 | 1/4"-20 X 1 3/4" PPHMS | 1/4"-20 X 1 3/4" PPHMS |
| DOOR | 2 | 1/4"-20 GROMMET NUTS | 1/4"-20 GROMMET NUTS |
| DOOR | 1 | #14 X 1 1/2" PPHMS | |
| DOOR | 3 | | 1/4"-20 X 3/4" PPHMS |

NOTE: DIMENSIONS IN () ARE IN MILLIMETERS

Customer Service
1-877-671-7011 www.allegion.com/us

