

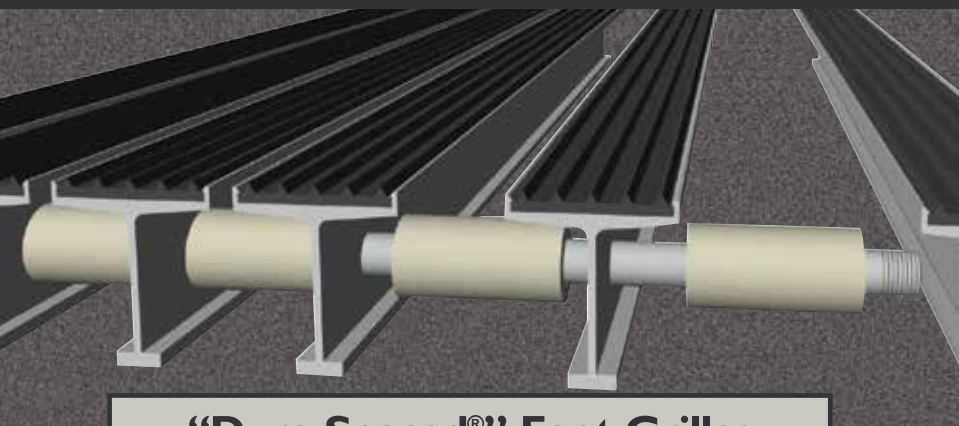
Trusted by Canada's busiest airport



**KNC**

**K.N.CROWDER mfg.inc.**

## kenagrille and ken-a-mat



**“Dura-Spaced®” Foot Grilles  
and Floor Mats**

Dimensionally  
permanent,  
dependable  
Foot Grilles  
and Floor Mats  
for all applications

by K.N. Crowder Mfg. Inc.



[www.kncrowder.com](http://www.kncrowder.com)

Canadian owned & operated for over 65 years

# KENAGRILLE Recessed Foot Grilles

Threaded 3/8" steel rods and nylon spacers enable our grilles to be compressed during assembly for construction that is hard to beat. Unlike the wear that can occur with aluminum key-lock grilles, tough nylon spacers allow the grille components to "flex" and return under the stressful conditions that grilles are subjected to. Wear is minimal and the result is a quiet, durable grille that stands the test of time.

Information contained in this catalogue may be subject to change without notice.

## General Specifications

Supply and install KENAGRILLE aluminum foot grilles in sizes and quantities indicated on drawings as manufactured by K.N. Crowder Mfg. Inc., Burlington, Ont. Aluminum tread bars shall be 6061-T6 alloy, joined together with 3/8" (9.525mm) diameter threaded steel rods, with nylon spacers at centres as required. Extruded aluminum frame shall be 6063-T5 alloy, corners to be neatly mitred and held together with corner brackets, for ease of assembly on-site. All aluminum shall be mill finished. Clear or Bronze Anodized finish available on certain models.

Contact the factory for more information.

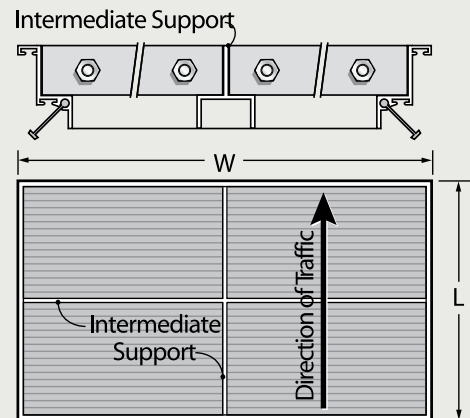


## How to order your KENAGRILLE foot grille

To assist us in understanding your specific needs, and processing your order correctly, there are certain items that we need to know. In addition to the dimensions of the foot grille, we require the model number, type of frame, type of evaporation or drain pan (if required), and colour of insert (if applicable). This information can be found beside the foot grille, where it is pictured, or on the page showing additional information. Please specify them with your order, along with the dimensions and specifications of your project.

If any custom site conditions exist or if our specs require clarification, please do not hesitate to contact us for assistance.

Assess the dimensions of your project using this diagram. Projects may require division into panels, for ease of transport, installation and regular maintenance.



## How to Specify KENAGRILLE

KenaGrille #	Frame Type	Special Options	Pan Type	Colour
EG.: FG-4 (vinyl insert)	c/w Type GA frame	See page 9	Evaporation pan 16 ga. Aluminum	V-01 Black (if required)

**WARRANTY** - K.N. Crowder Mfg. Inc. warrants its purchasers that Kenagrilles and Ken-A-Mats sold by it, when used for pedestrian purposes only, will be free of any defects in materials and workmanship for a period of one year from date of installation.

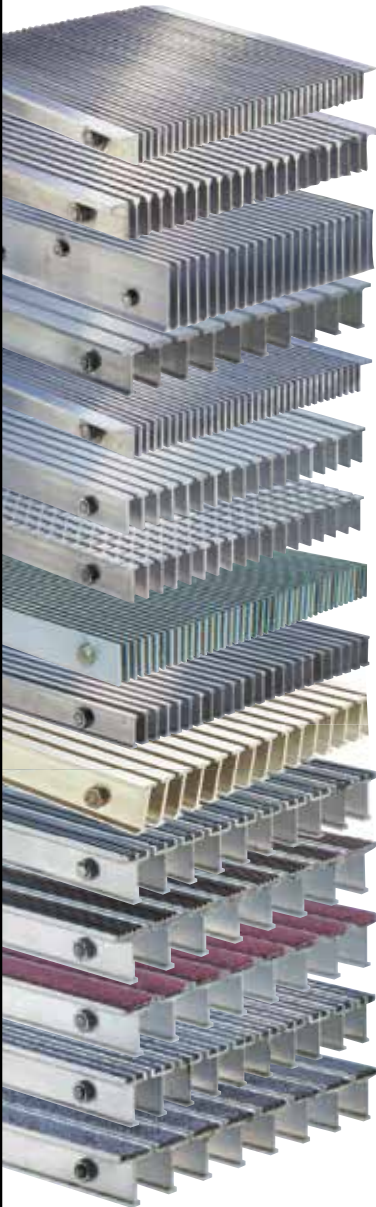
K.N. Crowder Mfg. Inc.'s liability is limited to the repair or replacement of units, which we agree are defective and will entertain no claims for consequential damages of any nature.



# product summary

- Available
- + Call for options
- N/A Not available
- \* Cushions only suitable with GC frames

## Grilles



GRILLE TYPE	FRAME			PAN TYPE			SUPPORT			PG	FINISH
	GA	GB	GC	DRAIN	EVAP	NO PAN	HIDDEN	VISIBLE	CUSHIONS		
FG-1	○	○	○	○	○	○	○	○	N/A	4	
FG-2	○	○	○	○	○	○	○	○	N/A	4	
FG-2 HD	FRAME HD SEE PAGE 4			○	○	○	○	○	N/A	4	
FG-5	○	○	○	○	○	○	○	○	*	5	
FG-10	N/A	○	○	○	○	○	○	○	N/A	5	
FG-11	○	○	○	○	○	○	○	○	N/A	5	
FG-12	○	○	○	○	○	○	○	○	N/A	6	
FG-16	FRAME GD/GB SEE PAGE 6			○	○	○	○	○	N/A	6	
FG-21	N/A	○	○	○	○	○	○	○	N/A	6	
FG-22	○	○	○	○	○	○	○	○	N/A	3	
FG-3	○	○	○	○	○	○	○	○	*	7	
FG-4	○	○	○	○	○	○	○	○	*	7	
FG-8	○	○	○	○	○	○	○	○	*	7	
FG-13	○	○	○	○	○	○	○	○	*	8	
FG-14	○	○	○	○	○	○	○	○	*	8	

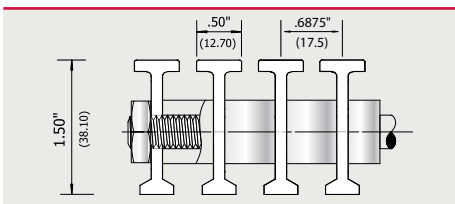
STANDARD MILL FINISH  
CLEAR OR BRONZE ANODIZING AVAILABLE ON CERTAIN MODELS - CALL FACTORY FOR OPTIONS.

\* See frame/pan types and special options on pg. 9.

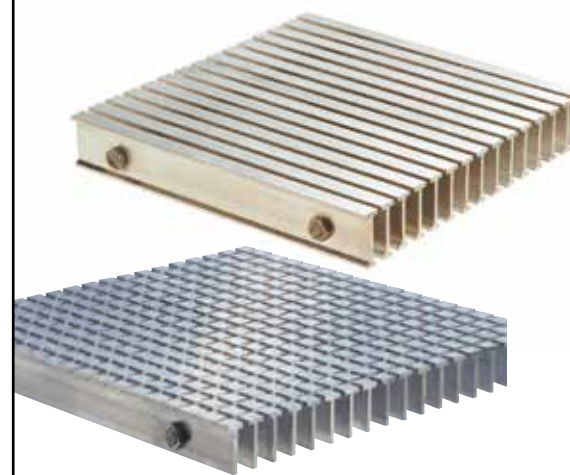
## New FG-22

Aluminum extrusion with 1/2" walking surface. Grille depth is well suited for high traffic retail entrances with shopping cart accessibility. Provides clog-free easy maintenance.

Fits frame: GA, GB or GC.  
.50" x 1.50" Tread Bar Dimensions

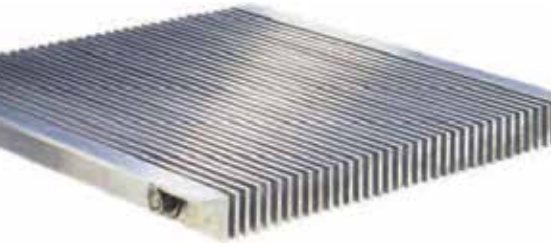


FRAME			PAN TYPE			SUPPORT			FINISH
GA	GB	GC	DRAIN	EVAP	NO PAN	HIDDEN	VISIBLE	CUSHIONS	STANDARD MILL FINISH
○	○	○	○	○	○	○	○	N/A	



FG22 cross-cut application also available - ideal in multi-directional and angled entrances.

# Foot Grilles



## FG-1

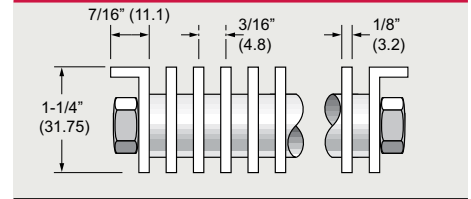
Aluminum flat bar. Thin line appearance works well with any decor.  
 Free area: 55%.

**Special cleaning required to prevent debris from collecting between tread bars**

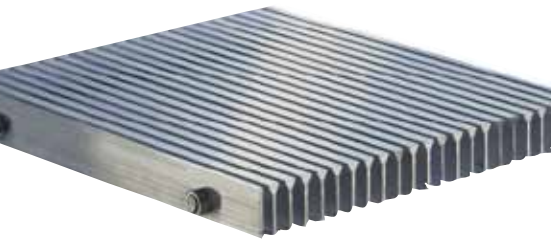
Fits frame: GA, GB or GC

.125" x 1.25" Tread Bar Dimensions

FRAME			PAN TYPE			SUPPORT			FINISH
GA	GB	GC	DRAIN	EVAP	NO PAN	HIDDEN	VISIBLE	CUSHIONS	STANDARD MILL FINISH
○	○	○	○	○	○	○	○	N/A	



**NEW & IMPROVED**



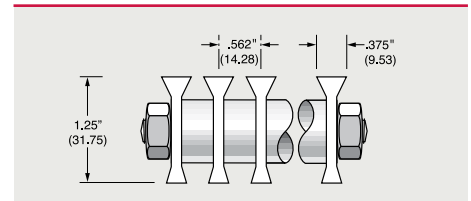
## FG-2

Aluminum extrusion with 5/16" walking surface. Tapered undercut provides clog-free, easy maintenance.

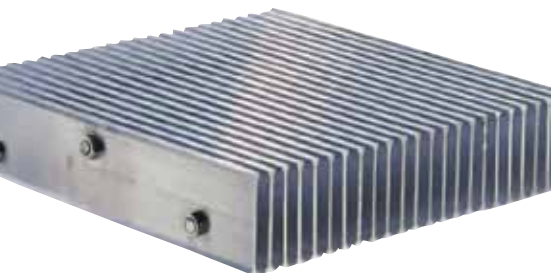
Fits frame: GA, GB or GC

.375" x 1.25" Tread Bar Dimensions

FRAME			PAN TYPE			SUPPORT			FINISH
GA	GB	GC	DRAIN	EVAP	NO PAN	HIDDEN	VISIBLE	CUSHIONS	STANDARD MILL FINISH
○	○	○	○	○	○	○	○	N/A	



**NEW & IMPROVED**



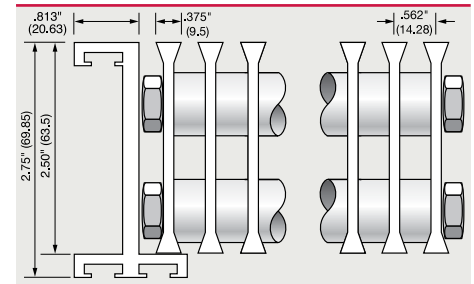
## FG-2 HD Heavy Duty Aluminum Grille

We have taken our most popular grille and made it even stronger for demanding traffic loads, i.e. automobile showrooms, building supply stores, etc.

Fits frame: HD only

.375" x 2.50" Tread Bar Dimensions

FRAME	PAN TYPE		SUPPORT			FINISH	
HD	DRAIN	EVAP	NO PAN	HIDDEN	VISIBLE	CUSHIONS	STANDARD MILL FINISH
	○	○	○	N/A	○	N/A	



- Available
- N/A Not available
- + Call for options

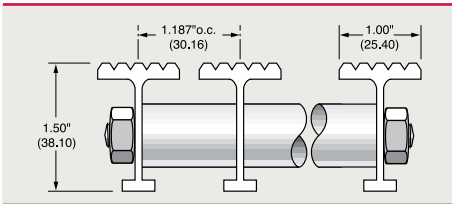
\* Cushions only suitable with GC frames  
See page 9



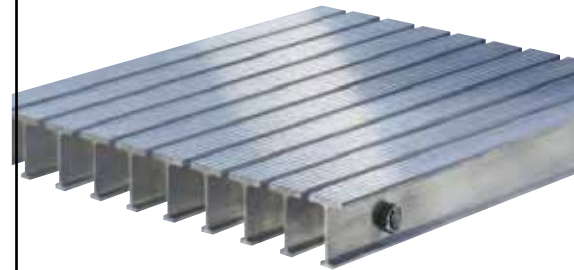
## FG-5

Aluminum Serrated T-extrusion. Economical and easily maintained.  
Indented serrations provide slip resistance.

Fits frame: GA, GB or GC.  
1.00" x 1.50" Tread Bar Dimensions



FRAME			PAN TYPE					SUPPORT	FINISH
GA	GB	GC	DRAIN	EVAP	NO PAN	HIDDEN	VISIBLE	CUSHIONS	STANDARD MILL FINISH
○	○	○	○	○	○	○	○	*	

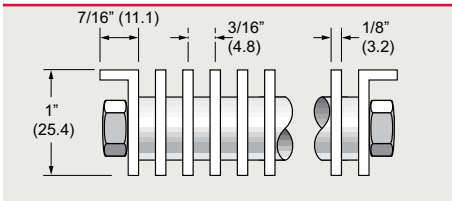


## FG-10

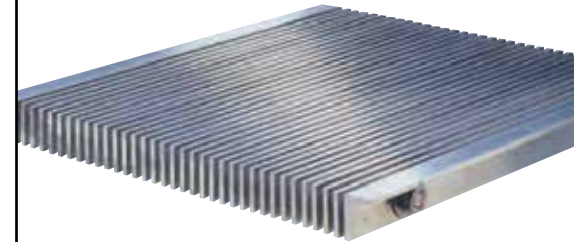
Aluminum flat bar similar to FG-1 but lower in profile.  
Thin Line appearance works well with any decor.

**Special cleaning required to prevent debris from collecting between tread bars**

Fits frame: GB or GC  
.125" x 1.00" Tread Bar Dimensions



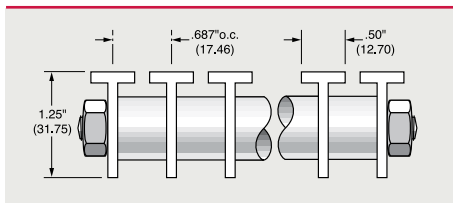
FRAME		PAN TYPE					SUPPORT	FINISH
GB	GC	DRAIN	EVAP	NO PAN	HIDDEN	VISIBLE	CUSHIONS	STANDARD MILL FINISH
○	○	○	○	○	○	○	N/A	



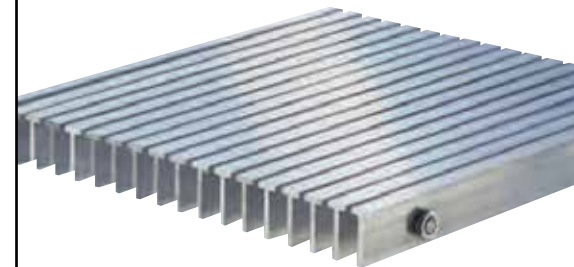
## FG-11

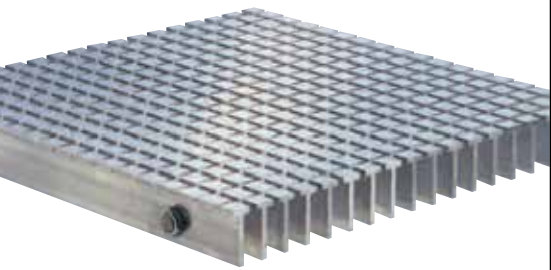
Aluminum T-extrusion with 1/2" walking surface.  
This model also allows for easy maintenance.

Fits frame: GA, GB or GC.  
.50" x 1.25" Tread Bar Dimensions



FRAME			PAN TYPE					SUPPORT	FINISH
GA	GB	GC	DRAIN	EVAP	NO PAN	HIDDEN	VISIBLE	CUSHIONS	STANDARD MILL FINISH
○	○	○	○	○	○	○	○	N/A	





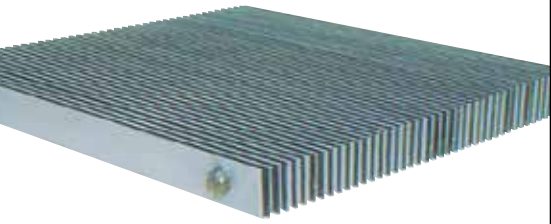
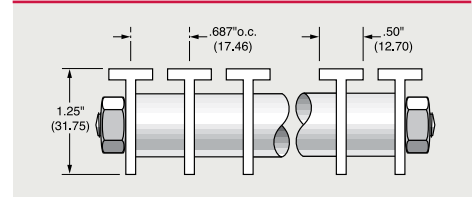
## FG-12

Aluminum T-extrusion with 1/2" squares and 3/16" spacing grid pattern. Well suited for multi-directional or angled traffic.

Fits frame: GA, GB or GC.

.50" x 1.25" Tread Bar Dimensions

FRAME			PAN TYPE			SUPPORT			FINISH
GA	GB	GC	DRAIN	EVAP	NO PAN	HIDDEN	VISIBLE	CUSHIONS	STANDARD MILL FINISH
○	○	○	○	○	○	○	○	N/A	



## FG-16 Stainless Steel Foot Grille

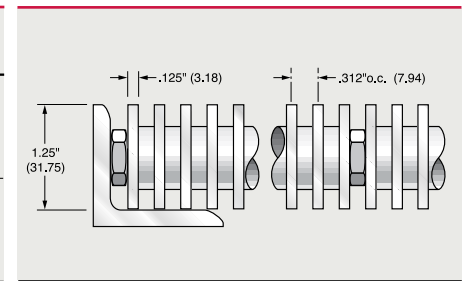
Elegance and prestige best describe our stainless steel foot grille constructed from 304 stainless steel alloy. Fabricated as ruggedly as our aluminum foot grilles. Longevity and durability are unsurpassed. Top surfaces to be polished to a #4 finish. Mill finish is available.

**Special cleaning required to prevent debris from collecting between tread bars**

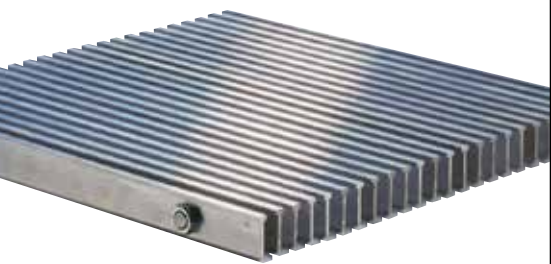
Fits Frame: GB (Aluminum) or GD (Stainless Steel).

0.125" x 1.00" or 1.25" Tread Bar Dimensions

FRAME			PAN TYPE			SUPPORT			LEGEND
GD	GB		DRAIN	EVAP	NO PAN	HIDDEN	VISIBLE	CUSHIONS	○ Available N/A Not available + Call for options
○	○		○	○	○	○	○	N/A	



Shown with frame type GD Stainless Steel



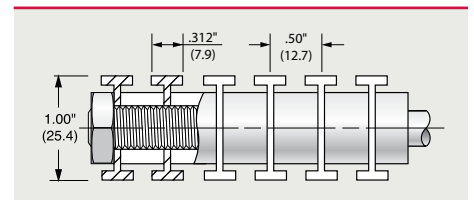
## FG-21

Economical, best used in retrofit applications where depth is limited.

Fits frame: GB or GC.

.312" x 1.00" Tread Bar Dimensions

FRAME			PAN TYPE			SUPPORT			FINISH
GB	GC		DRAIN	EVAP	NO PAN	HIDDEN	VISIBLE	CUSHIONS	STANDARD MILL FINISH
○	○		○	○	○	○	○	N/A	





- Available
- N/A Not available
- + Call for options
- \* Cushions only suitable with GC frames
- See page 9

## FG-3, FG-4 Vinyl Grille

**FG 3:** Lanel® vinyl slip-resistant tread, provides a sure-footed surface and excellent drainage. Note: Available in Black Only.

Fits frame: GA, GB or GC.

1.00" x 1.50" Tread Bar Dimensions

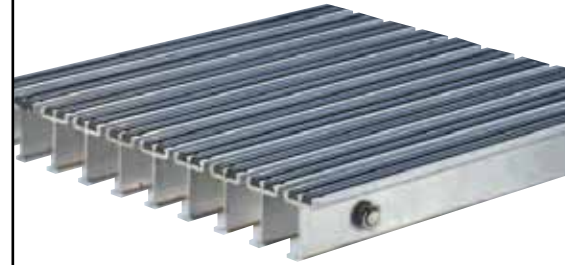
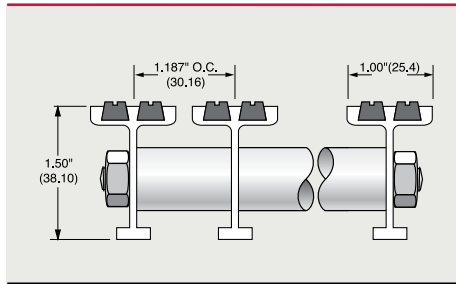
### VINYL GRILLE STYLE

FRAME			PAN TYPE			SUPPORT			FINISH
GA	GB	GC	DRAIN	EMAP	NO PAN	HIDDEN	VISBLE	CUSHIONS	STANDARD MILL FINISH
○	○	○	○	○	○	○	○	*	

### AVAILABLE COLOURS

Black only

V-01  
Black



**FG 4:** Similar to above, with an even greater slip-resistant surface area.

Fits frame: GA, GB or GC.

1.312" x 1.50" Tread Bar Dimensions

### VINYL GRILLE STYLE

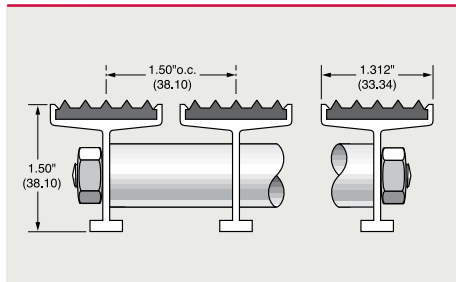
FRAME			PAN TYPE			SUPPORT			FINISH
GA	GB	GC	DRAIN	EMAP	NO PAN	HIDDEN	VISBLE	CUSHIONS	STANDARD MILL FINISH
○	○	○	○	○	○	○	○	*	

### AVAILABLE COLOURS

V-01  
Black

V-02  
Grey

V-03  
Brown



## FG-8 Carpet Grille

Durable fusion-bonded cut-pile carpet inserts provide slip and moisture resistant footing.

Fits frame: GA, GB or GC.

1.312" x 1.50" Tread Bar Dimensions

### CARPET GRILLE STYLE

FRAME			PAN TYPE			SUPPORT			FINISH
GA	GB	GC	DRAIN	EMAP	NO PAN	HIDDEN	VISBLE	CUSHIONS	STANDARD MILL FINISH
○	○	○	○	○	○	○	○	*	

### AVAILABLE COLOURS

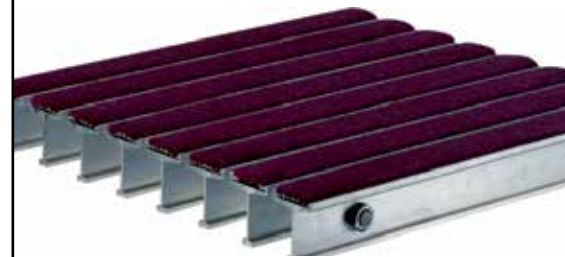
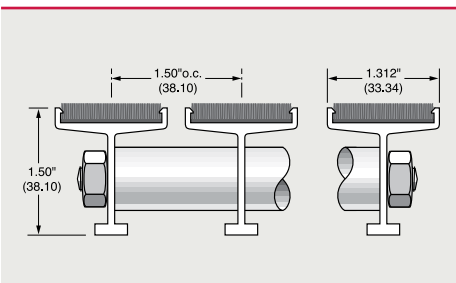
C-01  
Charcoal

C-02  
Grey

C-04  
Brownstone

C-05  
Teak

C-07  
Blue



\* Actual colours may vary from printed samples shown.

## FG-13, FG-14 Abrasive Grille

**FG 13:** Extra slip-resistant aluminum oxide grit is imbedded in a factory-applied epoxy filler.

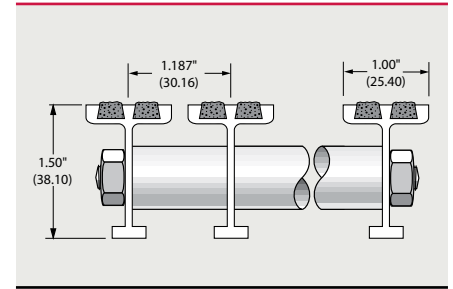
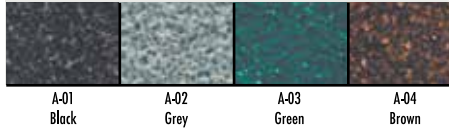
Fits frame: **GA, GB or GC.**

1.00" x 1.50" Tread Bar Dimensions

### ABRASIVE GRILLE STYLE

FRAME			PAN TYPE			SUPPORT			FINISH
GA 	GB 	GC 	DRAIN 	EMP 	NO PAN 	HIDDEN 	VISBLE 	CUSHIONS 	STANDARD MILL FINISH
○	○	○	○	○	○	○	○	*	

### AVAILABLE COLOURS



**FG 14:** Similar to above, with an even greater slip-resistant surface area.

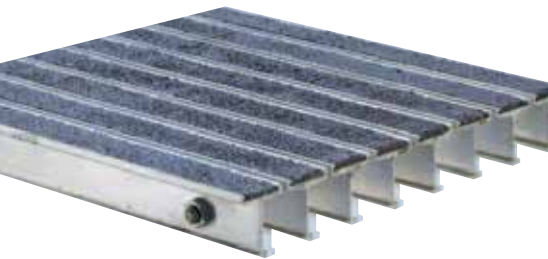
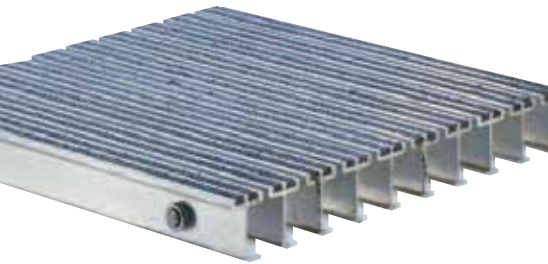
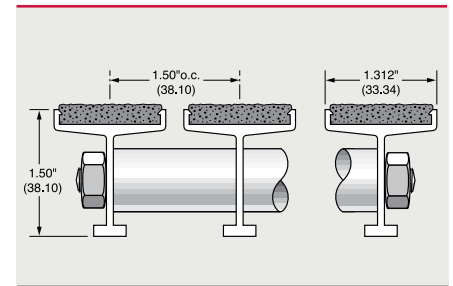
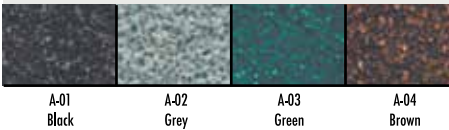
Fits frame: **GA, GB or GC.**

1.312" x 1.50" Tread Bar Dimensions

### ABRASIVE GRILLE STYLE

FRAME			PAN TYPE			SUPPORT			FINISH
GA 	GB 	GC 	DRAIN 	EMP 	NO PAN 	HIDDEN 	VISBLE 	CUSHIONS 	STANDARD MILL FINISH
○	○	○	○	○	○	○	○	*	

### AVAILABLE COLOURS



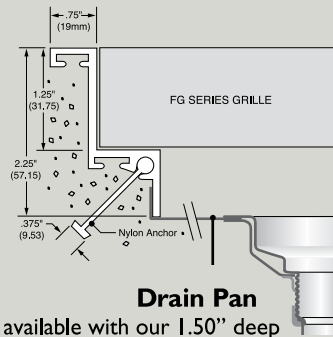


## FRAME TYPES

Note:  
Our selection of frames allows you to find the exact system for any application, design or decor requirements.

All frames are engineered to accommodate evaporation or drain pans, if required.

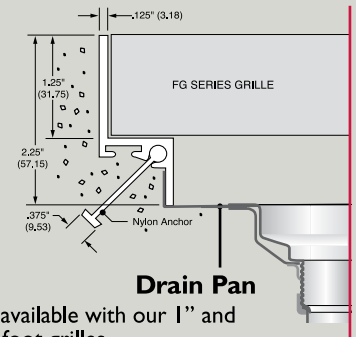
**GA**



**Drain Pan**

- Frame also available with our 1.50" deep foot grilles
- Commonly used in new concrete floor applications

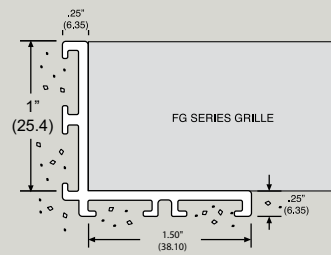
**GB**



**Drain Pan**

- Frame also available with our 1" and 1.50" deep foot grilles
- Thin profile is best suited when minimal frame visibility is required i.e. tile floor applications

**GC**



**Shown without Pan**

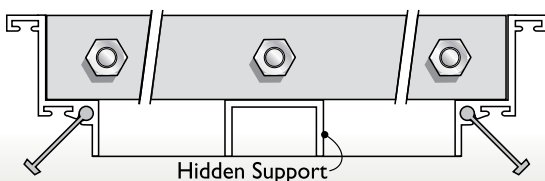
- Frame also available with our 1.25" and 1.50" deep foot grilles
- For installation in floors where depth is limited

## Kenagrille Pans

Kenagrille pans provide a corrosion resistant catch basin and are further coated at masonry contact points for long maintenance life. We supply: 16 ga. aluminum, 20 ga. galvanized steel, 20 ga. stainless steel, for an evaporation or drain pan application. Please specify which type is required (if applicable).

## Special Options: CL - Continuous Line

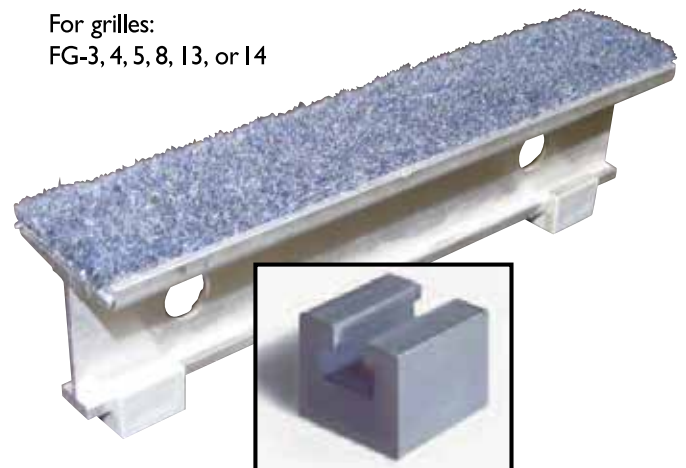
By using hidden supports and panel joints, grilles can be constructed as if to appear continuous. Some limitations and premiums may apply. Hidden or intermediate supports may or may not apply to this special option. Contact the factory to see if this option is available for your application.



## VC - Vinyl Cushions

Designed to provide added cushioning and sound suppression in level bed applications, with frame type GC

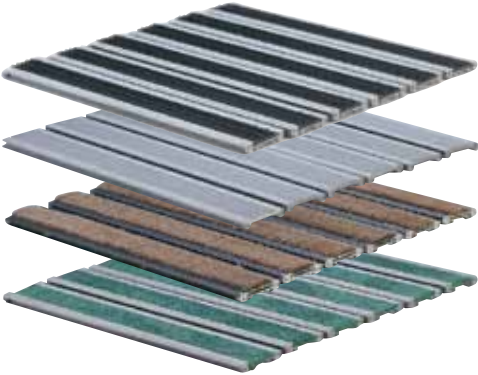
For grilles:  
FG-3, 4, 5, 8, 13, or 14



Not recommended for pan applications.

# KEN-A-MAT

## Mats



MAT TYPE	FINISHES		FRAME		
	CLEAR ANODIZED	BRONZE ANODIZED	MA	MC	SF
FM-4	○	○	○	○	○
FM-5	○	N/A	○	○	○
FM-8	○	○	○	○	○
FM-14	○	○	○	○	○

○ Available    N/A    Not Available

## KEN-A-MAT

K.N. Crowder Mfg. floor mats provide beautiful proven performance in a tough low profile shape for recessed or surface applications.

Tread Bars .375" (9.53) x 2.00" O.C. (50.80).

Dimensions are the same for all models.

## General Specifications

Supply and install KEN-A-MAT aluminum floor mats in sizes and quantities indicated on drawings as manufactured by K.N. Crowder Mfg. Inc. Surface shall be of serrated aluminum, Lanel® inserts, abrasive grit, or of carpet having fusion-bonded cut pile for durability and moisture resistance. Colour of insert to be selected by consultant from our standard range of colours. Inserts shall be locked into treadrails. Treadrails to be fabricated from 6063-T5 aluminum alloy and joined in a continuous aluminum hinge system to allow easy roll-up.

## How to order your KEN-A-MAT floor mat

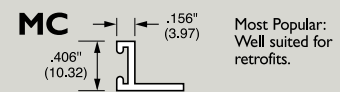
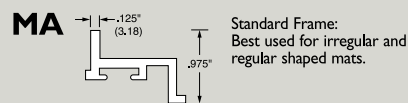
To assist us in understanding your specific needs, and processing your order correctly, there are certain items that we need to know. In addition to the overall dimensions of the foot mat, we require the model number, type of frame, and colour of insert (if applicable). This information can be found beside the floor mat, where it is pictured. Please specify them with your order, along with the dimensions and specifications of your project.

If any custom site conditions exist or if our specs require clarification, please do not hesitate to contact us for assistance.

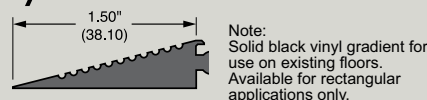
### How to Specify KEN-A-MAT floor mat

Ken-A-Mat #	Frame Type	Colour
EG.: FM-8 (carpet insert) ClearAnodized	c/w Type MC frame	C-01 Charcoal

## KEN-A-MAT Frames



### Vinyl SURFACE



### Flat Vinyl Edge

Note:  
Flat Vinyl extrusion also available and may assist as filler strips in retrofits.

○ Available  
 N/A Not available



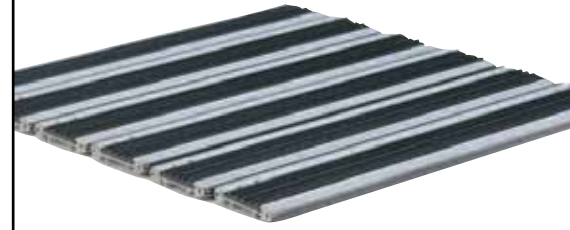
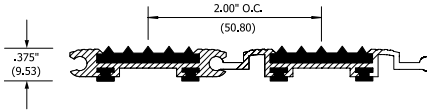
FINISHES		FRAME		
CLEAR ANODIZED	BRONZE ANODIZED	MA	MC	SF
○	○	○	○	○

**AVAILABLE COLOURS**

V-01 Black	V-02 Grey	V-03 Brown

### FM-4 Vinyl Mat

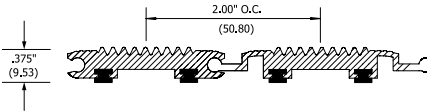
Serrated Lanel® vinyl slip-resistant tread inserts provides a sure-footed surface.



FINISHES		FRAME		
CLEAR ANODIZED	BRONZE ANODIZED	MA	MC	SF
○	N/A	○	○	○

### FM-5 Aluminum Mat

Serrated aluminum is economical and easily maintained, indented serrations provide slip-resistance.



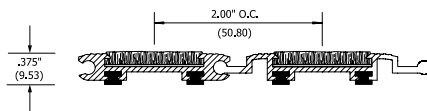
FINISHES		FRAME		
CLEAR ANODIZED	BRONZE ANODIZED	MA	MC	SF
○	○	○	○	○

**AVAILABLE COLOURS**

C-01 Charcoal	C-02 Grey	C-04 Brownstone	C-05 Teak	C-07 Blue

### FM-8 Carpet Mat

Durable fusion-bonded cut-pile carpet inserts provide durable, slip and moisture resistant footing.



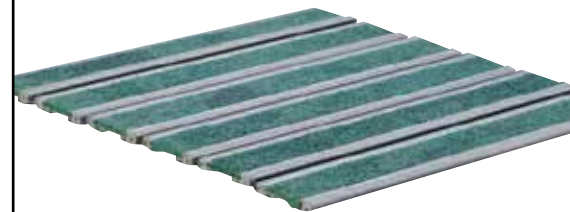
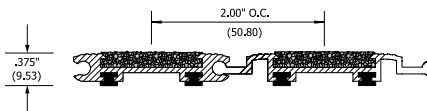
FINISHES		FRAME		
CLEAR ANODIZED	BRONZE ANODIZED	MA	MC	SF
○	○	○	○	○

**AVAILABLE COLOURS**

A-01 Black	A-02 Grey	A-03 Green	A-04 Brown

### FM-14 Abrasive Mat

Extra slip-resistant aluminum oxide grit is imbedded in a factory-applied epoxy filler.



\* Actual colours may vary from printed samples shown.

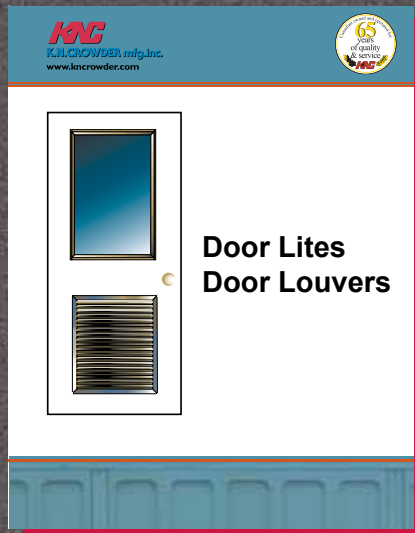


## Other Fine Products By K.N.Crowder



### CANADA THRESHOLDS

Where else but Canada with its extreme variations in climate, could one better test the use of weatherstrip and thresholds. Many thresholds, astragals and weatherstrip are anti-slip, handicap and fire-rated, in a variety of finishes.



### DOOR LITES AND DOOR LOUVERS

Catalogue highlights KEN-DOOR aluminum door lites, STEELITE steel door lights, steel and aluminum sight-proof door louvers, and steel adjustable "Z" blade louver systems with fire actuated closure mechanisms.



### CROWDERTRACK

Crowdertrack is committed to providing the Sliding Door Industry with quality engineered, durable, time-tested door hardware.