

Durulite Retailer XHD

Heavy Duty Retail Door



Retailer XHD shown with optional bumpers

Heavy Duty Retail Impact Traffic Door

Constructed with rotationally molded cross-linked polyethylene, impact absorbing Non-CFC urethane foam core, and full height aluminum back spine, the Durulite Retailer XHD is exceptionally durable in high volume retail establishments. The Retailer XHD is tough enough to withstand the abuse of personnel, carts, manual and motorized pallet jacks and occasional low speed forklift traffic. This heavy duty door is design to comply with all USDA sanitation requirements. Durulite doors are known for their long-term value and durability.

High Moisture or Washdown Environments

The Retailer XHD corrosion resistant panel is ideal for high moisture or regular washdown applications. The door panel has no gaps, joints or seams, and offers corrosion resistant hardware including composite V-Cams, stainless steel rollers and stainless steel lower hinge guards as standard components.

Impact Resistance

Standard tests for impact resistance indicate that cross-linked polyethylene is 5 times more puncture resistant and 3 times more flexible than ABS material used by competitors.



Insulated Core

Non-CFC urethane core is foamed-in-place to ensure a tenacious bond between the core and the outer skin, providing sound abatement and excellent thermal separation.

Gasketing

Replaceable perimeter edge gasketing is used to reduce energy flow between environments. The door comes standard with gasket along the leading, back and bottom edges.



Upper Hinge & Roller Assembly

Patented composite V-Cam hinge system can travel 120° in each direction and is mounted to a stainless steel base plate. The upper aluminum roller assembly has stainless steel bearings for years of service with minimal maintenance.



Lower Hinge Guard & Back Spine

Heavy duty lower hinge guard assembly protects the door panel from impact while acting as a positive hinge mount. Standard stainless steel construction eliminates corrosion problems. A heavy duty aluminum back spine with powder coat finish adds additional strength and ensures panel rigidity.

Durulite Retailer XHD

Product Details - Specification, Drawing and Available Colors

PART 1 - GENERAL

1.1 Section Includes – Monolithically (one-piece) formed, insulated, impact door systems, windows, hardware and accessories.

PART 2 - PRODUCTS

2.1 Manufacturer – Insulated impact traffic door to be model Durulite Retailer XHD as manufactured by Chase Industries.

2.2 Door Construction – Doors shall be a monolithic, hollow shell of high impact, cross-linked polyethylene with minimum wall thickness of 1/8", overall panel thickness of 1-1/2" and textured finish. Leading and bottom edges have molded in key extrusion to accept gaskets. The back edge has an extruded aluminum, powder coated spine with a keyway that accepts a blade gasket. The door panel core shall be foamed-in-place, Non-CFC urethane foam bonded to interior of the high density, cross-linked, polyethylene shell providing an insulating R factor of 9.86. Panels shall be manufactured with a one-piece back edge spine of continuous extruded aluminum with flanges that wrap the door panel. Spine shall be powder coated black.

2.3 Vision Panel – Window glazing shall be 1/8" thick polycarbonate with a 7/16" thick PVC cap separator placed between two 1/8" thick ABS frames. Maximum height from finish floor to the bottom of the viewing area shall not exceed 48". Window size shall be 12" x 18", 16" x 16" or 17" x 23" dependent upon panel size. Single pane is standard. Double pane is available.

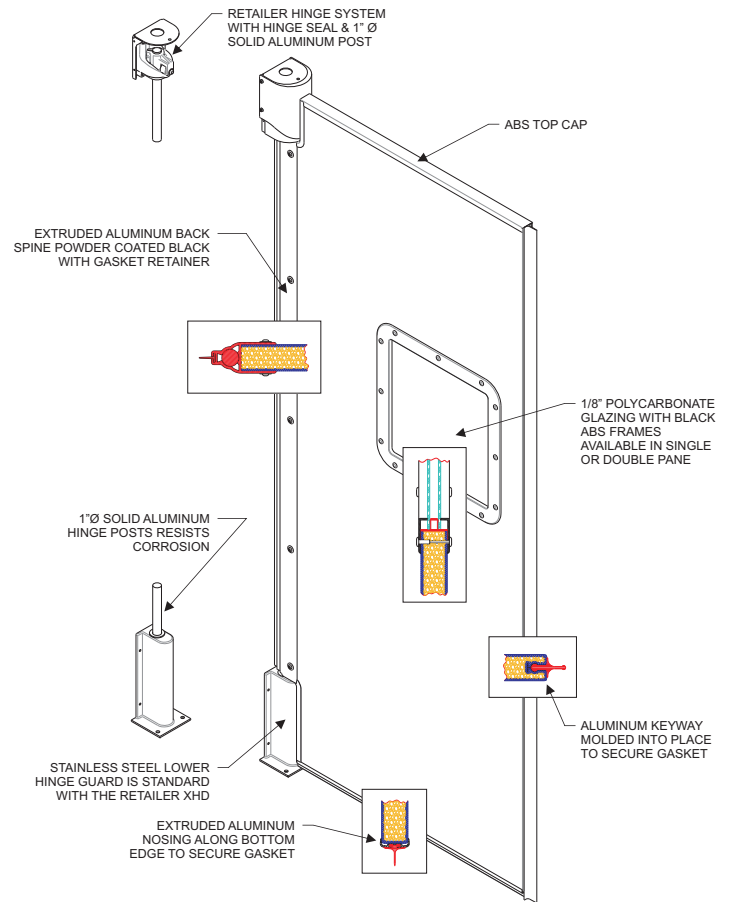
2.4 Hardware – Corrosion resistant hinge system consists of the upper hinge self-closing V-Cam design. Lower hinge shall be a stainless steel lower hinge adapter with UHMW sleeve. The hinge shaft shall be 1" diameter solid aluminum, mounted in the top and bottom of the aluminum back spine and fastened by screws on the inside of the spine.

2.4 Hardware cont. – The aluminum post rests in the UHMW sleeve, which is mounted in the stainless steel lower hinge guard. The stainless steel roller assembly mounts to the upper hinge post.

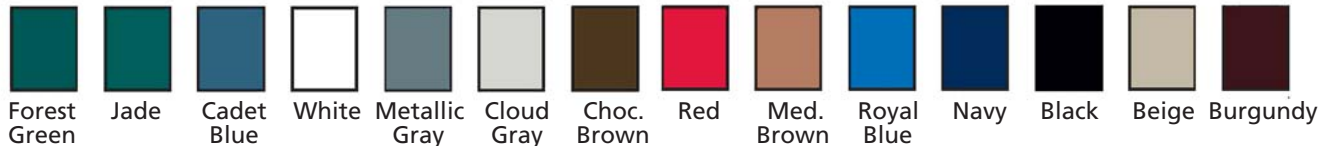
2.5 Accessories – Accessories can include polyethylene teardrop bumpers, impact plates, cart guards, 90 x 180 degree hardware, ADA windows, and/or limiting posts.

PART 3 - INSTALLATION

3.1 Installation – Install doors in accordance with Chase Industries instructions and standards.



Colors Available



Color shown may differ slightly from actual color. Consult factory for exact color match.



World's Leading Manufacturer of Traffic Doors

www.chasedoors.com

800.543.4455

In our continuing effort to improve our products, some specifications or descriptions may change. We reserve the right to make such changes without notice or recourse.