



# ARCHITECTURAL HARDWARE

Opening, closing, and securing





# DOOR CONTROLS

## Opening and closing

DORMA offers a full range of technologically advanced premium products and services that provide safety and security as well as convenience and comfort. In our portfolio are traditional architectural and commercial products that are both beautiful and functional to meet the demands of any building design. All products comply with barrier-free requirements and can be used with aluminum, wood, or hollow metal doors and frames.



TS93 Series  
Surface Door  
Closer



8900 Series  
Surface Door  
Closer



8600 Series  
Surface Door  
Closer



7400 Series  
Surface Door  
Closer



### Surface Door Closers

All DORMA Grade 1 surface closers are backed by an unprecedented 25-year warranty and are certified to meet the requirements of ANSI A156.4. Assorted specialty function arms, mounting plates, and brackets, as well as a wide range of painted or decorative architectural finishes are available to suit almost any application.





BTS75V Series  
Floor Concealed Closer



BTS80 Series  
Floor Concealed Closer



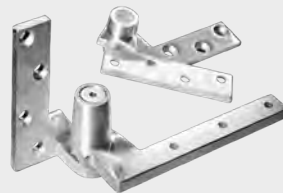
BTS80 EMB Series  
Floor Concealed Closer

**Concealed Door Closers**

Architects are challenged to design buildings that are both beautiful and functional, down to the last detail. DORMA offers the perfect solution for those who prefer the aesthetic advantages of a concealed door closer. Our full range of products includes floor concealed, overhead concealed, and concealed in the door closers. All products comply with barrier-free requirements and can be used with aluminum, wood, or hollow metal doors and frames.



ITS96 Series  
Overhead Concealed Closer



LM Series Pivots



Designed for long life and trouble-free operation, DORMA's LM Series pivots support door weight effectively in many applications. They span a wide variety of styles that can interface with other DORMA products on wood, aluminum, or hollow metal doors and frames.



**Holder/Release Devices**

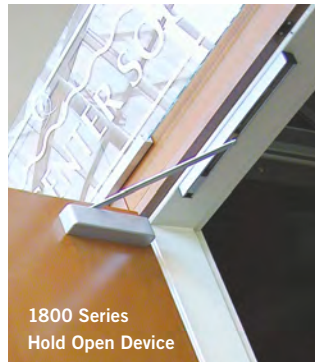
DORMA holder/release devices inexpensively guard a single door opening—allowing unimpeded, easy access throughout a building while containing and cutting the spread of smoke and/or fire.



EM Series  
Electromagnetic Door Holders

**EMR Series Hold Open Device**

The EMR Series & 1800 SD models have integral photo-electric smoke detectors that can either be wired into an existing fire/smoke control system or stand alone.



1800 Series  
Hold Open Device

The 1800 non-detected models and EMF Series can function as companion units to the detected 1800 SD and EMR devices, or can be wired directly into a central alarm system.

**Stops and Holders**

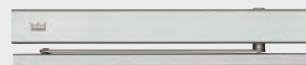
DORMA 900/700 Series Stops and Holders complement our full range of door closers to provide a total door control system. Separate stops and holders are the preferred method of limiting door swing.

**900/700 Series  
Stops and Holders**

# LOW ENERGY OPERATORS

---

Opening and closing



ED900 Low Energy  
Power Operator

With an innovative electromechanical drive and microprocessor motion control system, DORMA's ED900 is an advanced low-energy swing door power operator that is exceptionally quiet, safe, and easy to use. When operated manually, the ED900 demands little physical effort, while advanced power assist through the entire opening cycle makes even the heaviest-rated door feel light.





J200 Series Grade 2  
Interconnected Locksets

DORMA's mortise, cylindrical, tubular, and dead bolt locks are a comprehensive selection of Grade 1 and Grade 2 locks that meet the functional and aesthetic requirements of commercial and institutional doors. Models throughout the line have UL

listings and meet or exceed ANSI standards. In addition, DORMA offers a complete selection of cylinders and keying options, including master keying, construction master keying, and patented key control.



## DORMA SKC — Serialized Key Control

Before Serialized Key Control (SKC), key system tracking and maintenance was complicated. DORMA developed the SKC program with two things in mind—simplicity and security. DORMA maintains key control by serializing every key blank. Authorized resellers and key cutters use a secure, web-based application to verify and track every single key.





# EXIT DEVICES

## Securing



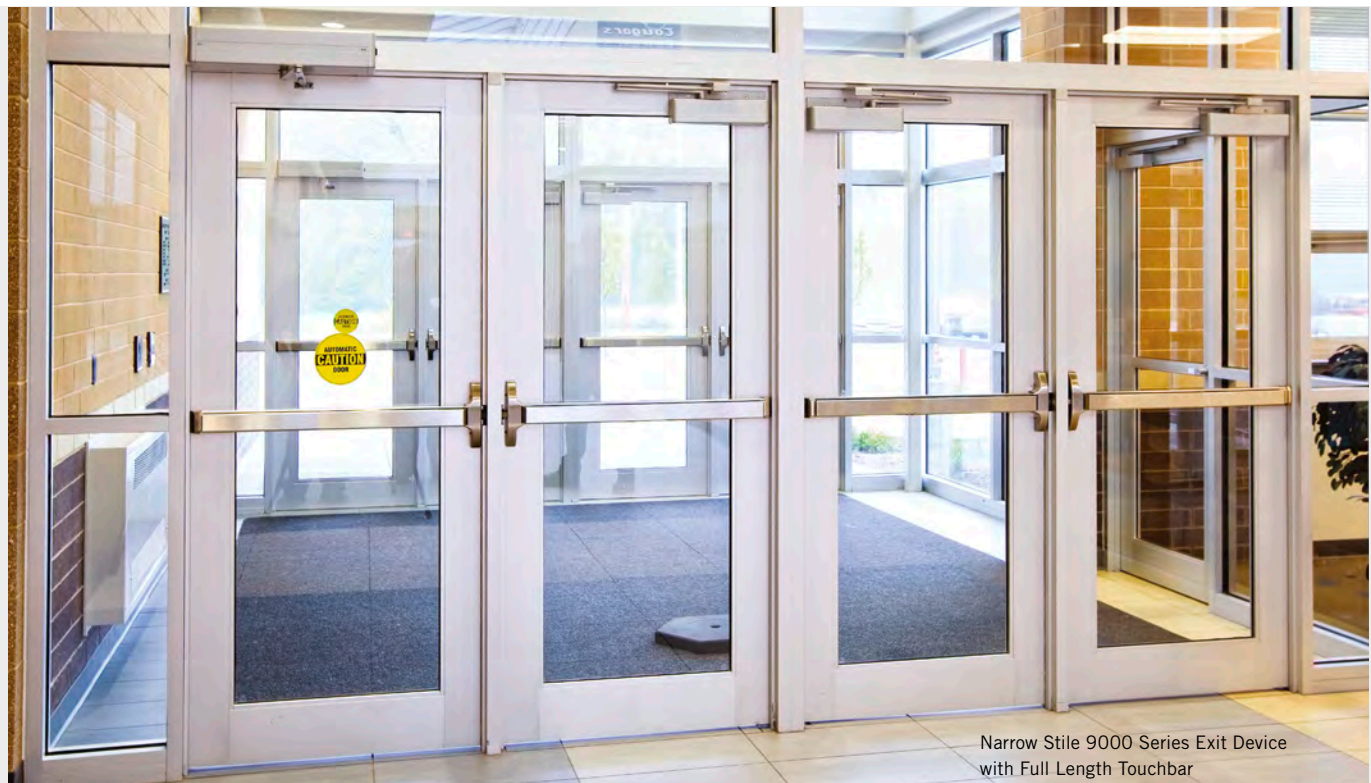
9000 Series Heavy Duty  
Exit Devices for Wide and  
Narrow Stile Doors

DORMA's wide and narrow stile exit devices for high-impact applications are available in rim, mortise, and surface or concealed rod configurations in both fire- and panic-rated versions.

DORMA exit devices reliably secure egress doors in compliance with all applicable fire/life safety code requirements. A delayed egress exit device is available when security and safety are a concern. They offer the specifier a selection of true

architectural finishes and a full complement of electrified options, including alarmed exit, delayed egress exit, electric latch retraction, and device monitoring.

All DORMA exit devices are listed by UL and CUL under their continuing reinspection programs and conform to standards UL 10C positive pressure testing. They are certified to the requirements of ANSI/BHMA A156.3 for Grade 1 exit devices.



Narrow Stile 9000 Series Exit Device  
with Full Length Touchbar



# ELECTRONIC ACCESS CONTROL

## Securing

DORMA's line of access control hardware complements our full line of door controls and exit devices. Electromagnetic locks, including specialized locks, are designed for such applications as gates, cabinets, and sliding doors. Also available are shear locks, delayed egress locks, power supplies, electric strikes, and programmable digital keypads. Completing this line of equipment are desktop consoles along with push-button and key switch combinations.



DORMA offers a wide range of accessories to complement its line of Electronic Access Control products including Desk Switches, Door Position Sensors, Power Transfer Devices, Timers/Relays, Motion Sensors, and Monitor Strikes.





DORMA USA, Inc.  
Dorma Drive, Drawer AC  
Reamstown, PA  
800-523-8483  
[www.dorma.com](http://www.dorma.com)