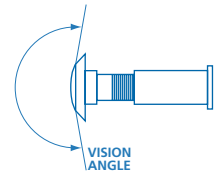
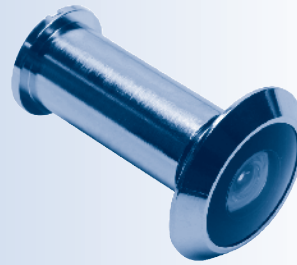
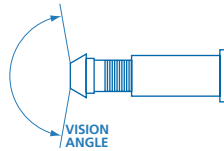




DOREX PRO DOOR VIEWER

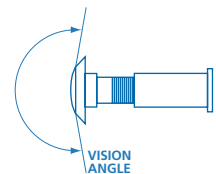
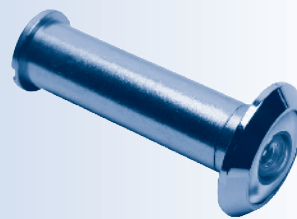
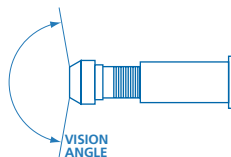
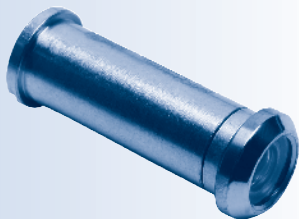


- Solid brass door viewer
- Polished optical glass lenses
- Rated: 20 minute fire resistance on wood door and 90 minute fire resistance on steel door
- Individually boxed
- Finish: polished brass or polished chrome

- Solid brass door viewer
- Polished optical glass lenses
- Rated: 20 minute fire resistance on wood door and 90 minute fire resistance on steel door
- Individually boxed
- Finish: polished brass or polished chrome

MODEL NUMBER	BORE	FIRE RATING	VISION ANGLE	FINISH	PER BOX	WEIGHT LBS / KG	MODEL NUMBER	BORE	FIRE RATING	VISION ANGLE	FINISH	PER BOX	WEIGHT LBS / KG
ML16	12 mm	20 / 90 min	160°	C3, C26	50	3.0 / 1.4	DS200	14 mm	20 / 90 min	200°	C3, C26	25	1.9 / 0.8

DOOR VIEWER



- Solid brass door viewer
- Acrylic optical lens
- DV160 series door viewer is intended for use with classified fire door rated up to and including 20 minutes
- Individually boxed
- Finish: bright brass, oil rubbed bronze or satin chrome

- Solid brass door viewer
- Acrylic optical lens
- DV180 and DV200 series door viewer with intended for use on classified fire door rated up to and including 20 minutes
- Individually boxed
- Finish: bright brass, oil rubbed bronze or satin chrome

MODEL NUMBER	BORE	FIRE RATING	VISION ANGLE	FINISH	PER BOX	WEIGHT LBS / KG	MODEL NUMBER	BORE	FIRE RATING	VISION ANGLE	FINISH	PER BOX	WEIGHT LBS / KG
B02	12 mm	N/A	160°	C3, C10B, C26D	50	3.0 / 1.4	B03	14 mm	N/A	180°	C3, C10B, C26D	12	0.8 / 0.35
DV160		20 min		3, 26D			DV180		20 min		3, 26D		
							B04	16 mm	N/A	200°	C3, C26D		1.0 / 0.46
						DV200	14 mm	20 min	3, 26D				

R2 02/11

Dimensions unless specified otherwise are: Inches (Millimeters)