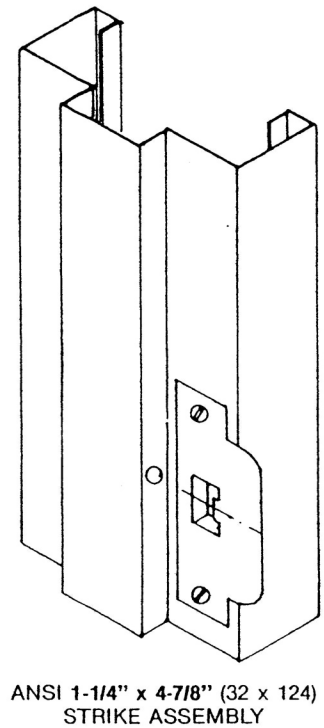
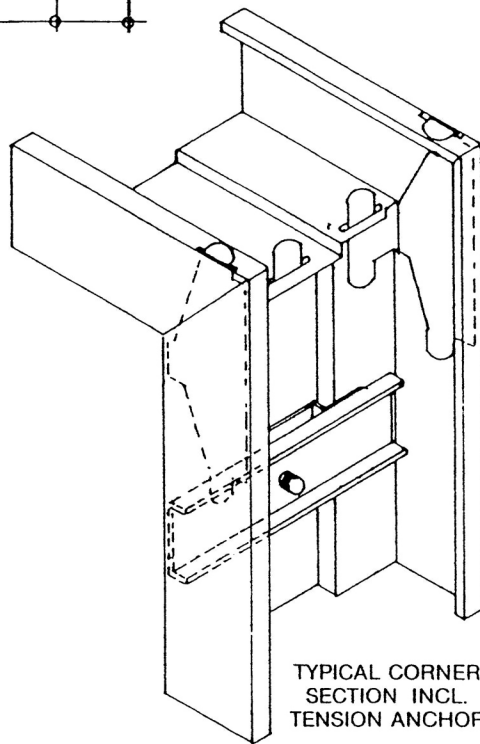


PREPARATION FOR
4-1/2" x 4" (114 x 102)
TEMPLATE HINGES
REGULAR WEIGHT



ORIGINAL DATE OF ISSUE — JULY 1978

LH SWING KEY RH

REVISIONS

#

DATE

General

1

Jan. '81

NOTES

All dimensions given are subject to + or - 1/16" (± 2) tolerance.

See reverse side for specifications.

Dimensions shown in () are in mm.