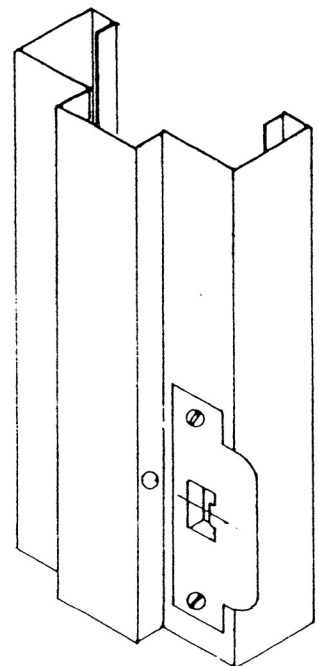
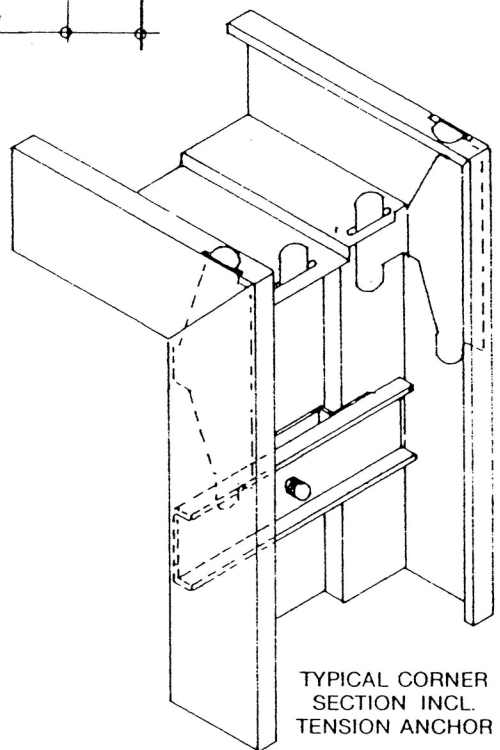


PREPARATION FOR
4-1/2" x 4" (114 x 102)
TEMPLATE HINGES
REGULAR WEIGHT



ORIGINAL DATE OF ISSUE — JULY 1978			LH SWING KEY RH
REVISIONS	#	DATE	NOTES All dimensions given are subject to + or - 1/16" (± 2) tolerance. See reverse side for specifications. Dimensions shown in () are in mm.
General	1	Jan. '81	