

**GENERAL
STORAGE
SYSTEMS**

CITATION

CEILING-HUNG

Toilet Stall

**Installation
Instructions**

GENERAL STORAGE SYSTEMS LTD

2995 PAGE STREET, LONDON, ONTARIO N5V 4P6

PHONE: [519] 453-5910

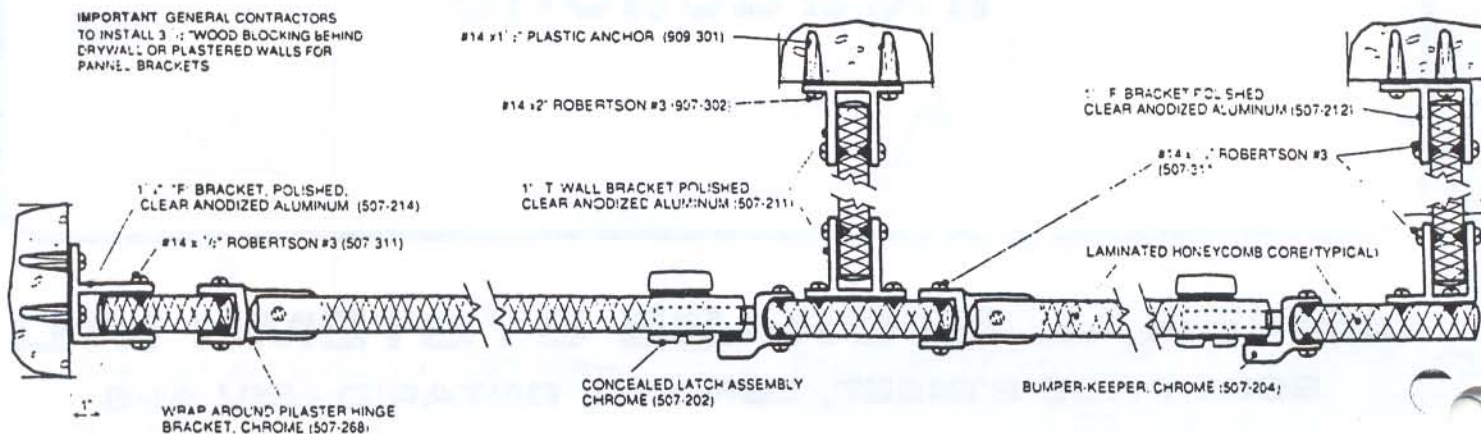
FAX: [519] 455-0037

CONTENTS

PRE-INSTALLATION INSTRUCTIONS / HORIZONTAL SECTION.....	PAGE 2
STYLE OF ENCLOSURE - DIMENSION DRAWINGS.....	PAGE 3
LAYOUT INSTRUCTIONS / BRACKETS AND CEILING FASTENERS....	PAGE 4
POSITION PANELS / END PILASTER & HINGE PRE-ASSEMBLY.....	PAGE 5
FIRST UNIT - INSTALLATION INSTRUCTIONS	PAGE 6
HANG DOORS, ACCESSORIES.....	PAGE 7
DOORS, LATCH, ASSEMBLY.....	PAGE 8

PRE-INSTALLATION INSTRUCTIONS

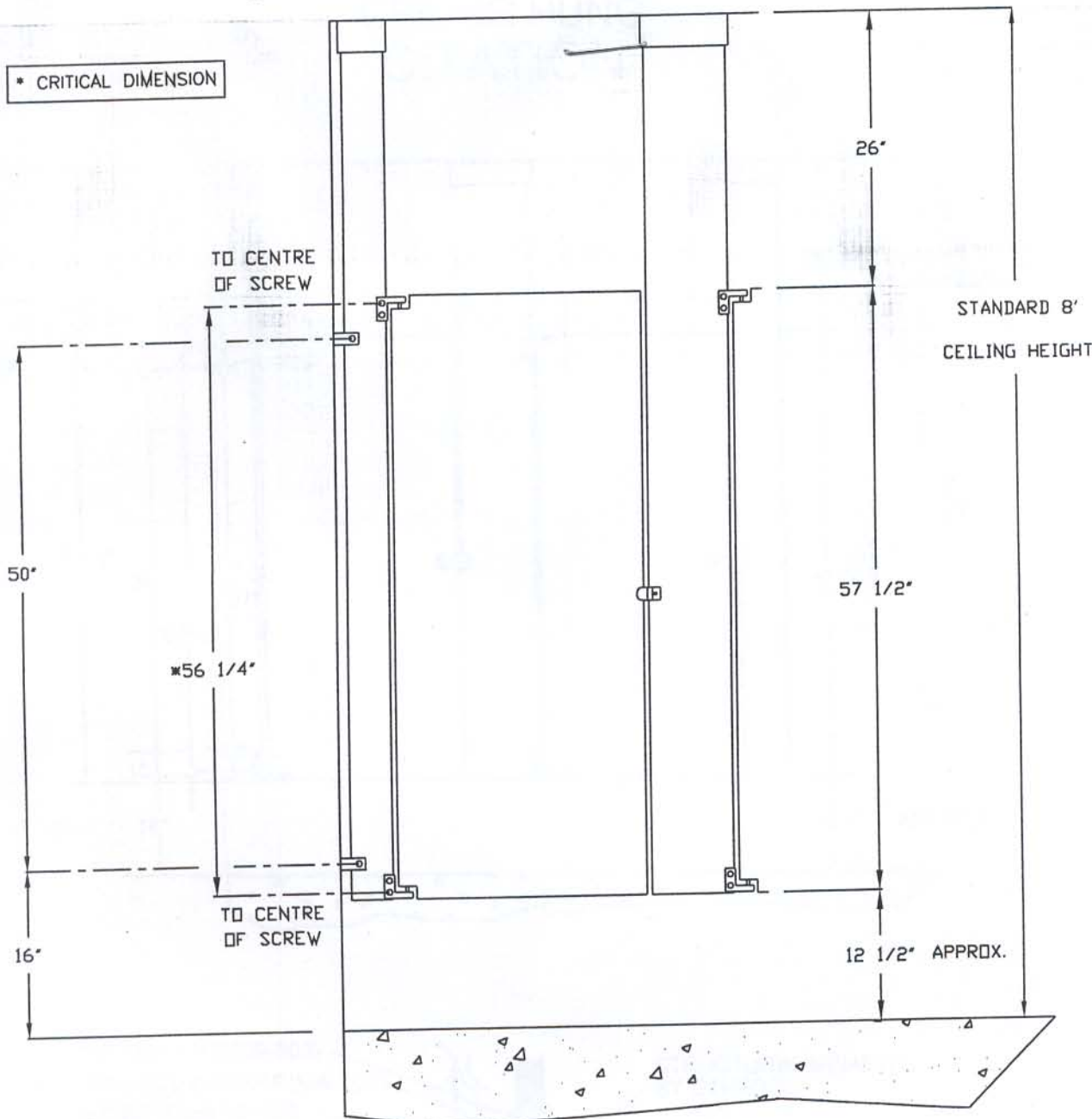
1. **STUDY** carefully all job prints, details, instructions and specifications.
2. **CHECK** and verify all dimensions on job prints with actual job conditions. Make adjustments as required for risers, drain pipes, radiators, etc., not indicated on shop drawings.
3. **CHECK** level and quality of floor and walls before proceeding with installation.
4. **SORT**, check and distribute all materials.
5. **FOR INSTALLATION BETWEEN WALLS** establish mid point and lay out to each side, then equalize any dimensional differences at two end enclosures. Verify all shop drawing dimensions before proceeding.



HORIZONTAL SECTION

CITATION - CEILING HUNG

* CRITICAL DIMENSION



3/8" HEX NUT (509-303)

3/8" LOCK WASHER (509-203)

3/8" LOCK WASHER (509-203)

3/8" HEX NUT (509-303)

3/8" FLAT WASHER (509-204)

#8 x 1/2" ROBERTSON #3 S.M.S. (107-316)

CARRYING CHANNEL 10 GA.

3" STAINLESS STEEL SHOE

3/8" DIA.-16T.P.I. STUD (509-305)

3/8" BEVEL WASHER CAST (509-205)

STRUCTURAL MEMBER BY OTHERS

DRILLING OF STRUCTURAL MEMBER FOR STUDS AND INSTALLATION OF STUDS TO BE BY OTHERS.

* KEY CHANNEL DIMENSION VARIES

2" PROJEC.

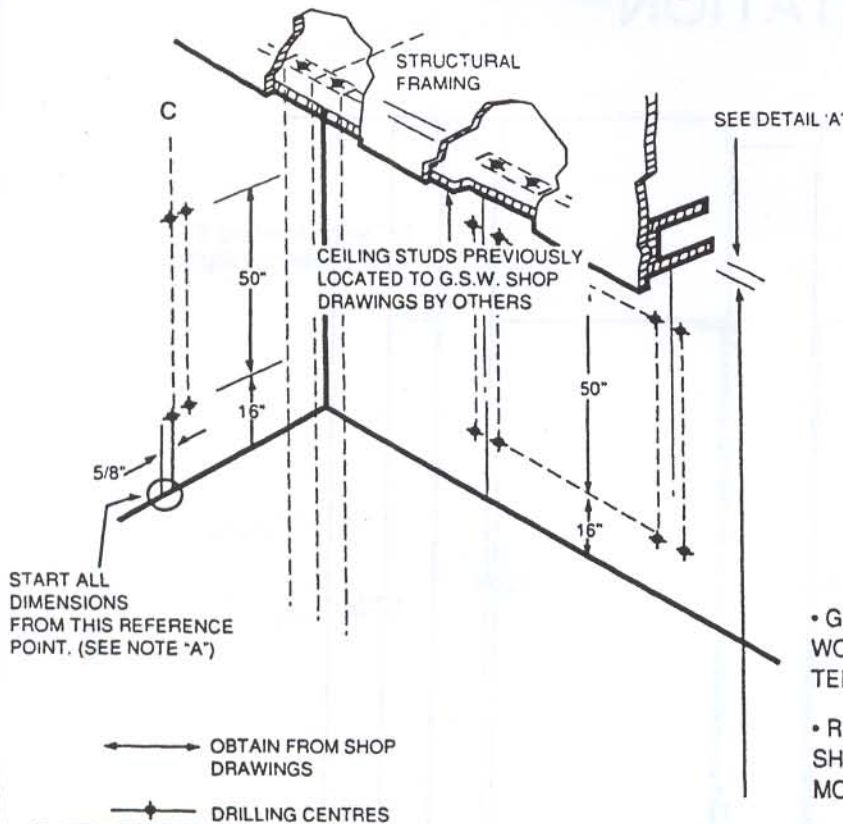
8"0" MAXIMUM FINISHED FLOOR TO FINISHED CEILING

IMPORTANT GENERAL CONTRACTORS TO INSTALL 3 1/2" WOOD BLOCKING BEHIND DRYWALL OR PLASTERED WALLS FOR PANEL BRACKETS

GENERAL STORAGE SYSTEMS

PRINTED IN CANADA
FORM# 2C.2 6/05

C1 LAYOUT



- A. Location of finished walls and ceiling line established by others. (Refer shop drawings)
- B. Establish reference point and lay out front line of enclosures on finished ceiling line. Refer to shop drawings for all dimensions as indicated by legend. Layout must be accurate in relation to finished walls and ceiling line if enclosures are to fit.
- C. Mark off outside edges of pilasters - For dimensions refer to shop drawings.

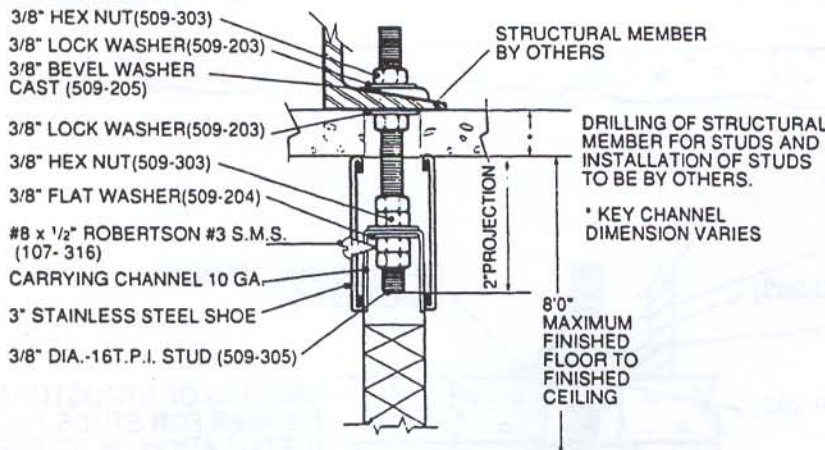
Recheck measurements between preinstalled bolts before establishing centre lines for panel brackets on wall.

Establish and mark centre lines of all top and bottom wall brackets according to shop drawings and measurements shown.

NOTE

- GENERAL CONTRACTORS TO INSTALL 3-1/2" WOOD BLOCKING BEHIND DRYWALL OR PLASTERED WALLS FOR PANEL BRACKETS.
- RECOMMENDED LOCATIONS OF BRACKETS SHOULD BE VARIED TO TAKE ADVANTAGE OF MORTAR JOINTS.

C 2 BRACKETS AND CEILING CONNECTIONS



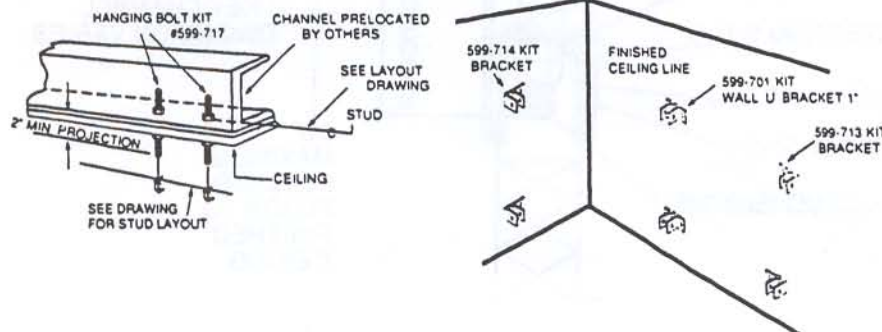
#14 X 1-1/2" RD. HD. ROBERTSON SHEET METAL SCREW

NOTE!

ON DRYWALL CONSTRUCTION REPLACE WITH 1/4 X 4" TOGGLE BOLTS [NOT BY G.S.S.]. IF WOOD BLOCKING NOT IN, PLACE BRACKET TO WALL CONNECTION.

- A. Insert anchors into holes in walls.
- B. Fasten wall brackets with screws as shown.

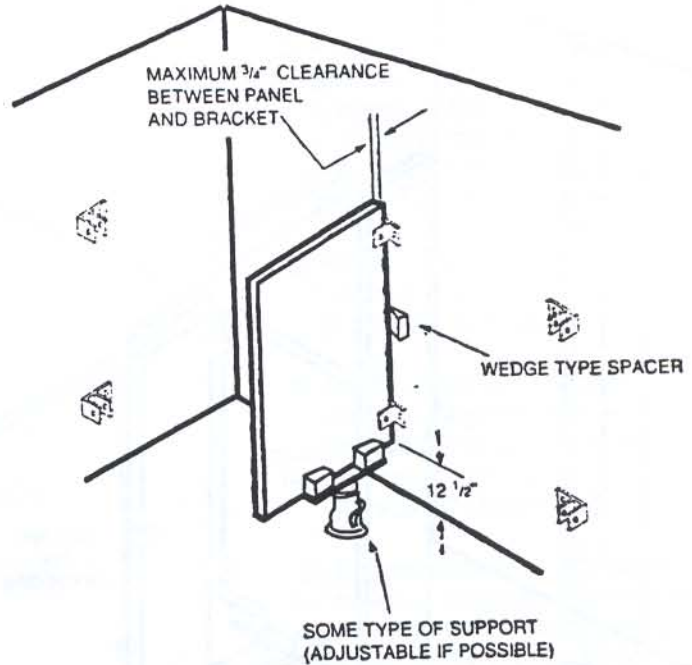
HANGING BOLTS MUST BE ALIGNED CORRESPONDING TO THE FINISHED WALLS IF ENCLOSURES ARE TO FIT



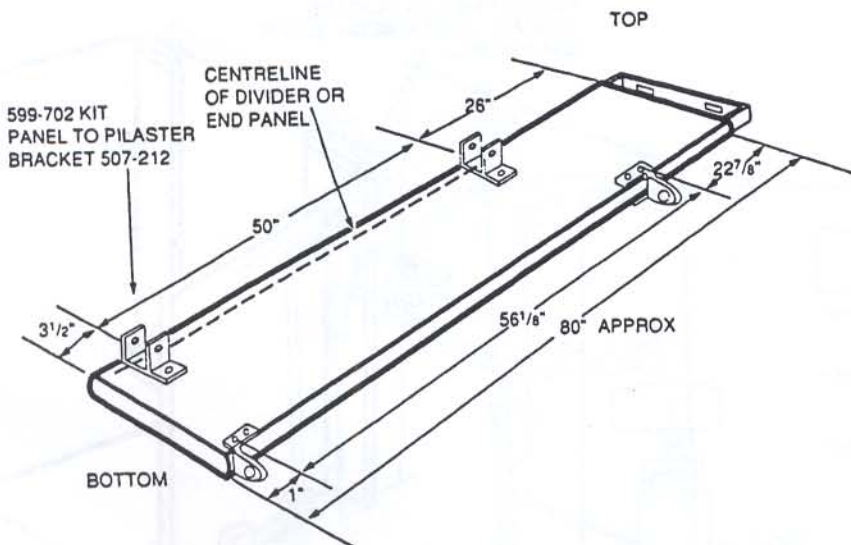
GENERAL
STORAGE
SYSTEMS

C 3 -POSITION PANELS

- A. Use some type of support (adjustable if possible) to hold panel.
- B. Set panel on support and into wall brackets.
- C. Insert wedge type spacer between edge of panel and wall.



C 4 PILASTER PRE-ASSEMBLY



NOTE!

MAKE SURE THAT THE PANEL TO PILASTER BRACKET CONNECTION CORRESPONDS WITH ANY DIMENSIONAL CHANGES IN WALL LAYOUT-i.e. PRECEDING INSTRUCTIONS 1-2-3

MOUNT FITTINGS TO BACK SIDE OF PILASTER (INSIDE OF COMPARTMENT) WHEN ERECTED

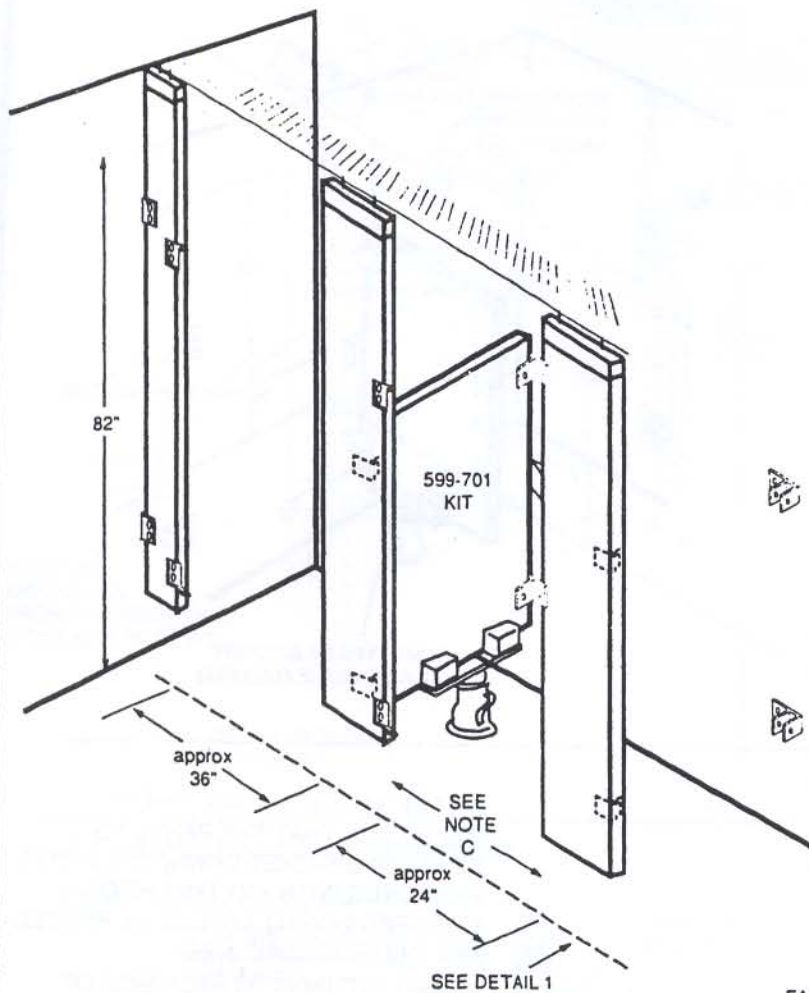
END PILASTER ASSEMBLY

- A. Use brackets as template. Pre-punch and drill through holes in fittings. (Do not drill through both skins).#12 drill
- B. Fasten brackets with #14 x $\frac{1}{2}$ " Robertson head metal screws.

HINGE BRACKET ASSEMBLY

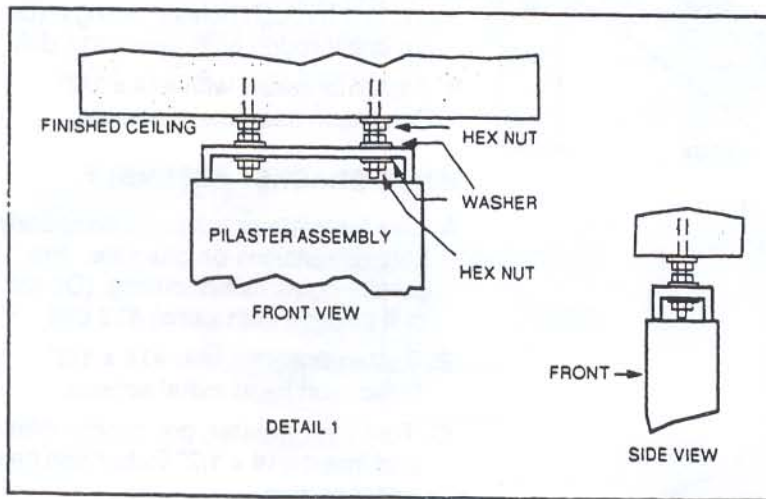
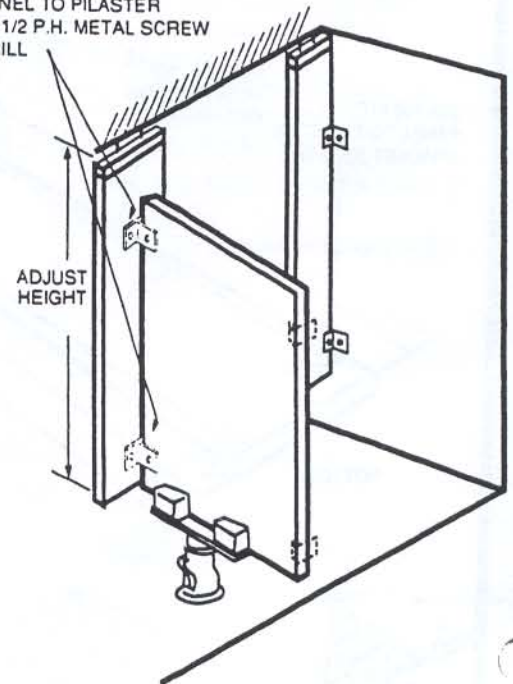
- A. Use template or measure accurately hole dimensions on one side. Pre-punch holes before drilling. (Do not drill through both skins).#12 drill
- B. Fasten brackets with #14 x $\frac{1}{2}$ " Robertson head metal screws.
- C. Turn over pilaster, pre-punch holes and insert #14 x $\frac{1}{2}$ " Robertson head metal screws.
- D. Insert bottom nylon cam.(see door assembly instructions, Page 8)

5 ERECT AND ATTACH PILASTERS-FASTEN PANELS



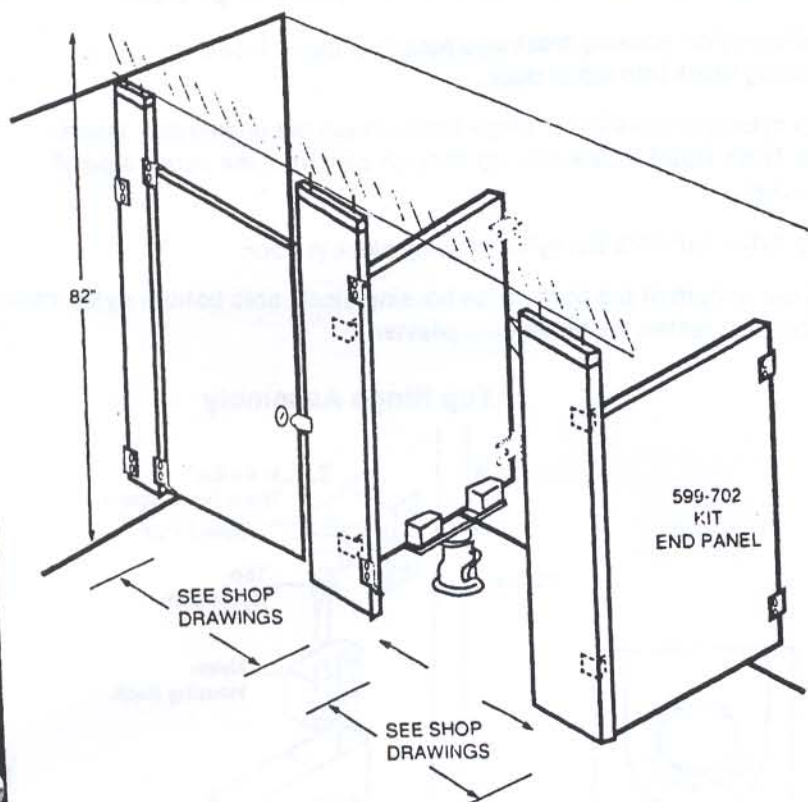
- A. Fasten brackets to pilaster located as per elevation.
- B. Apply other set of nuts on rods about 7/8" from ceiling line.
- C. Slide one piece shoe down over top of pilaster. Lift and slip pilaster pre-assembly over one rod at a time- including washer and fasten loosely with one set of washers and hex nuts.
- D. Adjust pilaster to required height and plumb. Check door opening between pilasters and make adjustment for equal distance. Tighten nuts.
- E. Plumb and level divider panel with pilaster - fasten to pilaster brackets only. **DO NOT FASTEN PANEL TO WALL BRACKETS.**

FASTEN PANEL TO PILASTER
WITH #14 X 1/2 P.H. METAL SCREW
USE #12 DRILL

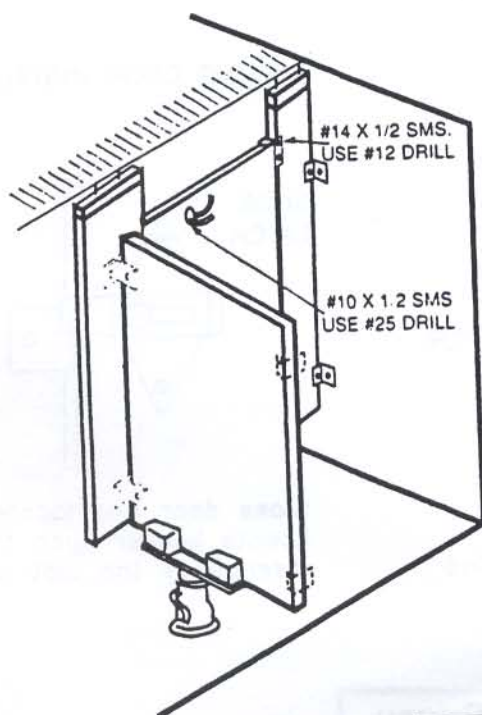


GENERAL
STORAGE
SYSTEMS

6 HANG DOORS AND INSTALL ACCESSORIES



- A. Hang pre-assembled doors - See operation No. 7 and concealed latch assembly procedure. Make final adjustments for alignment and proper operation of door.
- B. Fasten all panels to wall brackets with screws - Remove all spacers and supports.
- C. Position Bumper-Keeper on pilaster - Align centrally with latch bolt and fasten with #14 x 1/2" sheet metal screw. (Use 3/16" Drill #12)
- D. Tighten all screws and fastening devices. Install accessories as required (paper-holder, etc.). Check entire installation and touch up painted surfaces where required.



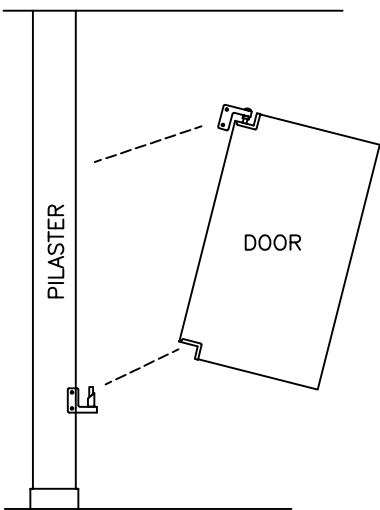
PARTITION MAINTENANCE

G.S.S. Toilet Partitions have a factory baked finish formulated and applied to give durability and lasting resistance to ordinary cleaning, abrasion, scuffing, etc. Normal preventive maintenance will keep these partitions looking beautiful and keep your maintenance costs at a minimum.

These partitions should be wiped down with a damp, soft cloth periodically. Stubborn dirt should be washed with a mild soap and lukewarm water.

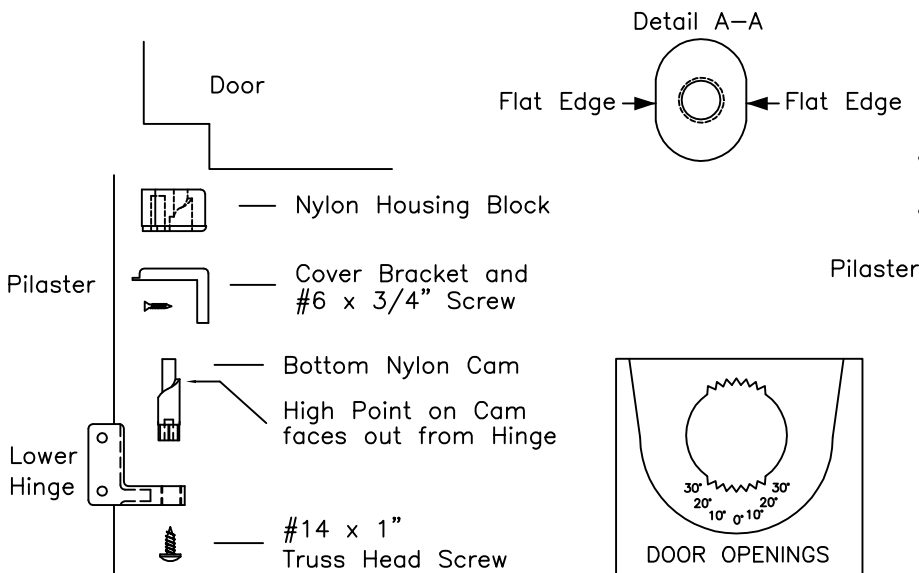
When washing is necessary, always use two containers, one with lukewarm water and a mild soap and the other with clear water. Let the soap do the work. Never rub the partitions in one area excessively. Rinse with clear water and wipe down with a clean, soft cloth. Never use harsh detergents or chemical cleaners.

7 – DOOR ASSEMBLY – HANG AND ADJUST

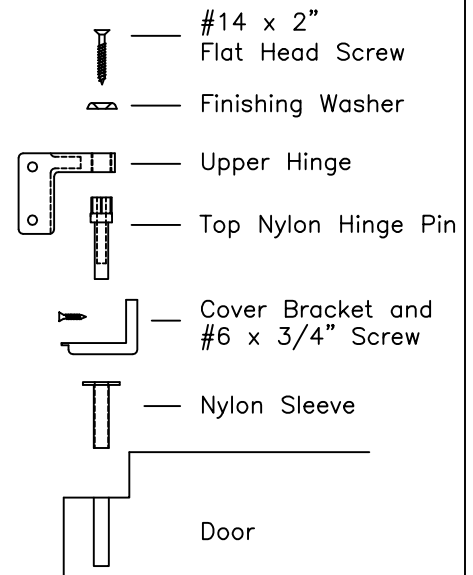


1. Drill holes in Pilaster for Hinge Brackets (See Critical Dimension pg. 3)
2. Place Bottom Nylon Cam into lower Hinge bracket secured with a #14 x 1" Truss Head Screw. Recheck that preset door opening meets specifications. Install Lower Hinge Bracket.
3. Insert Nylon Housing Block into bottom of door. Be sure to bottom out the Nylon Housing Block against the wood within the door.
4. Insert Nylon Sleeve into the wooden hole at the top of the door. Make sure the flat edges on sleeve is parallel to the front and back face of the door (Detail A-A).
5. Install Cover Bracket onto top and bottom of door using a #6 x 3/4" flat socket 'A' zinc screw.
6. Insert Top Nylon Hinge Pin into upper Hinge Bracket from the underside. Insert #14 x 2" Flat Head Screw with Finishing Washer into top of Nylon Hinge Pin from the top side of Hinge Bracket.
7. Insert Top Nylon Hinge Pin into Nylon Sleeve at the top of the door.
8. Position the bottom of the door (Nylon Housing Block) onto Bottom Nylon Cam. Raise door and fasten Upper Hinge Bracket onto Pilaster.

BOTTOM HINGE ASSEMBLY

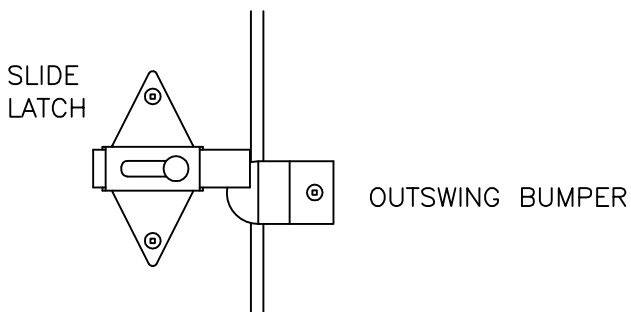


TOP HINGE ASSEMBLY



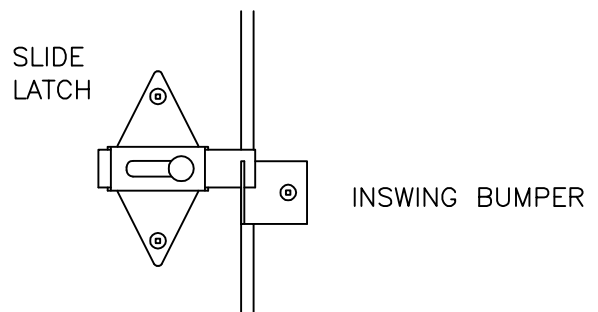
8 – ASSEMBLY OF SURFACE SLIDE LATCH

OUTSWING DOOR INSTALLATION



Close door and locate slide latch keeper. Locate outswing keeper such that when latch bolt is fully thrown, it engages behind the top corner of the bumper, and will clear the top of the bumper when lifted for emergency access.

INSWING DOOR INSTALLATION



Close door and locate slide latch keeper. Locate keeper such that latch bolt disengages the slot when door is lifted.

PRINTED IN CANADA