

LEGEND:

1. PRESSED STEEL FULLY WELDED BULLET RESISTANT FRAME.
2. HOLLOW METAL BULLET RESISTANT DOOR.
3. VOIDS FILLED WITH INSULATION.
4. ARMOUR SHIELD PLATE TO UL752. ARMOUR SHIELD MAY VARY IN THICKNESS AS REQUIRED TO ACHIEVE PERFORMANCE RATING.
5. HORIZONTAL STEEL STIFFENERS.

OUR STOCK OPTIONS

STOCK FRAMES & DOORS ARE AVAILABLE IN LEVELS 1 THRU 8 IN 3'-0" x 7'-0" SIZE ONLY, WITH A VARIETY OF JAMB DEPTHS. HARDWARE TEMPLATING INCLUDES 4.50"x.190" HINGES, CYLINDRICAL OR MORTISED LOCK OR EXIT DEVICE, AND SURFACE CLOSER.

SIDELITE, BORROWED LITE FRAMES, AND DOORS WITH VISION LITES ARE AVAILABLE. SEE VISION LITE DETAIL DRAWINGS ON WEBSITE FOR LEVELS 1 THROUGH 4. FOR OTHER OPTIONS, PLEASE CONSULT FACTORY.

PRODUCT OPTIONS

- TACK & FILLED "SEAMLESS EDGE SEAMS"
- FLUSH CLOSED TOP CAP
- FLUSH CLOSED BOTTOM CAP

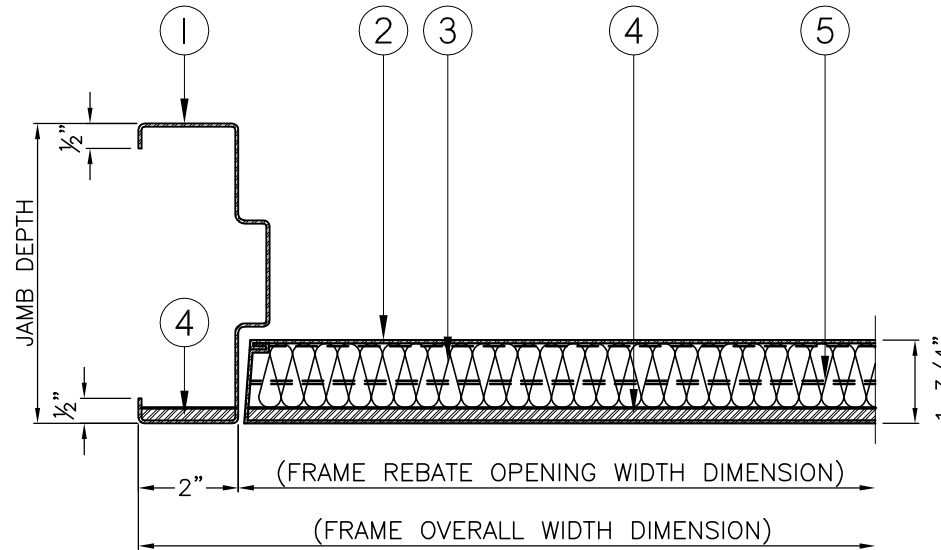
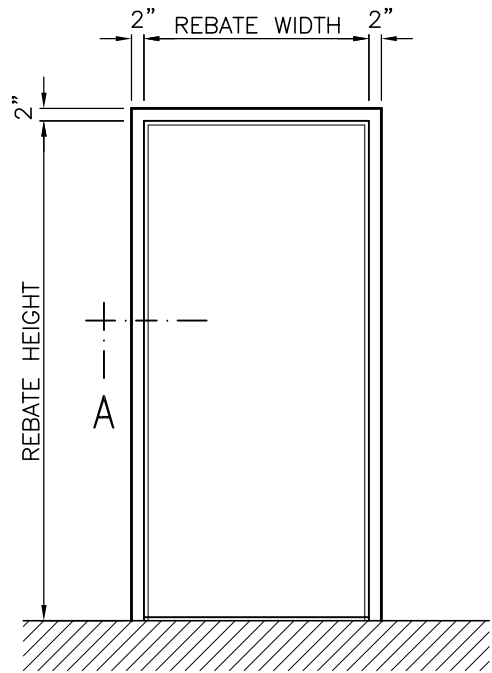
FIRE RATINGS

- 20 MINUTE
- 45 MINUTE
- 90 MINUTE

JOB NO:

SHEET: 1

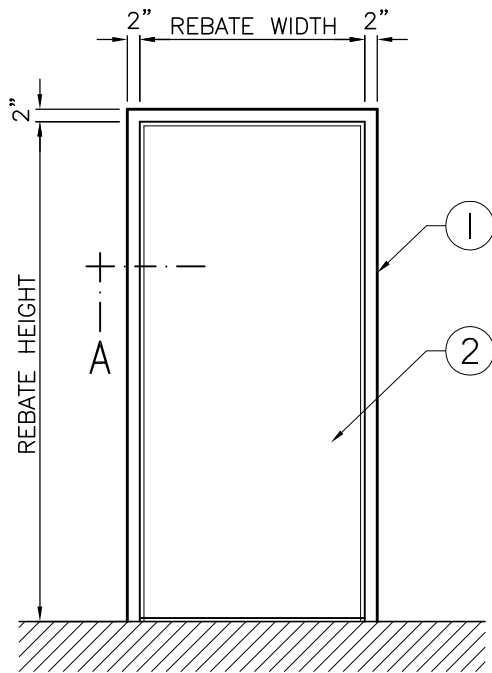
OF: 1



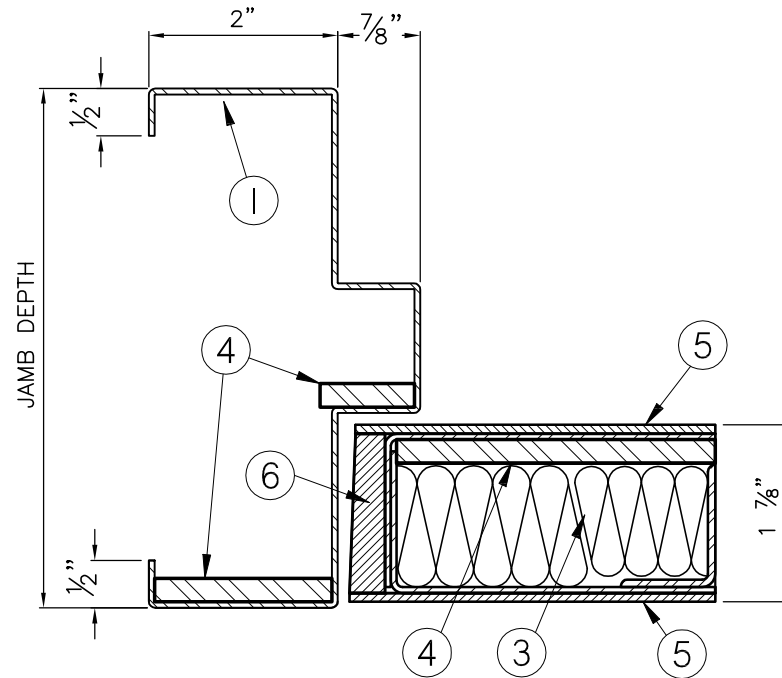
NOTE:  
 FRAME MUST BE INSTALLED AT FINISHED FLOOR HEIGHT.  
 (DO NOT EMBED IN FLOOR)



## TYPICAL BULLET RESISTANT SINGLE FRAME AND STEEL DOOR TO UL752 LEVEL 1 TO 8



ELEVATION



SECTION A

LEGEND:

1. PRESSED STEEL FULLY WELDED BULLET RESISTANT FRAME.
2. WOOD VENEER BULLET RESISTANT DOOR.
3. BULLET RESISTANT DOOR CORE.
4. ARMOUR SHIELD TO UL752 (LEVEL 1 TO 8).
5. WOOD FACE VENEER. (BOTH SIDES) FACE VENEER TO BE: \_\_\_\_\_
6. ALL EDGES TO BE SOLID HARDWOOD INCLUDING MATCHING EDGES AT STILES. HARDWOOD EDGES TO BE FINISHED BY OTHERS.

GENERAL NOTES:

- ALL DOORS INCLUDE FACTORY PRE-MACHINING FOR HARDWARE
- ALL DOORS INCLUDE FACTORY SEALING AT EDGES.
- FACTORY PRE-FINISHING IS OPTIONAL  
SPECIFIED FACTORY FINISH TO BE: \_\_\_\_\_

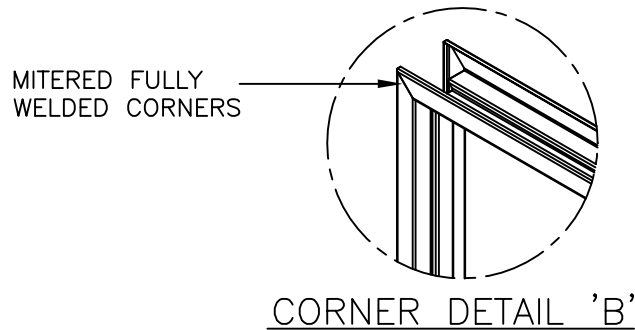
NOTE:

WARNING FOR USE OF PLASTIC LAMINATE

PLASTIC LAMINATE DOORS ARE SENSITIVE TO HIGH MOISTURE ATMOSPHERE. DO NOT EXPOSE TO RELATIVE HUMIDITY ABOVE 40%.

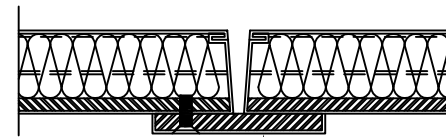
NOTE:  
FRAME MUST BE INSTALLED AT FINISHED FLOOR HEIGHT.  
(DO NOT EMBED IN FLOOR)

**NOTE:** THESE DRAWINGS ARE ISSUED FOR GENERAL INFORMATION ONLY AND ARE NOT INTENDED FOR MODIFICATION. FOR FURTHER INFORMATION PLEASE CONSULT OUR SALES OR ENGINEERING DEPARTMENTS.

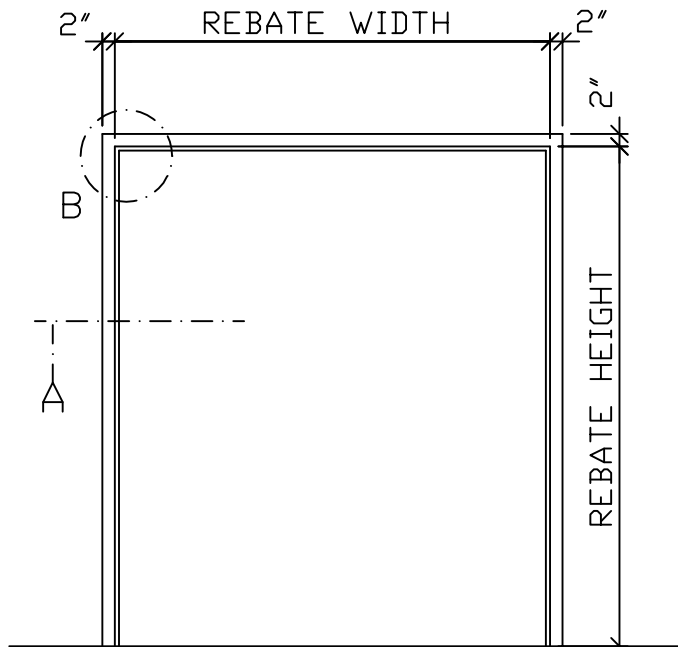


**LEGEND**

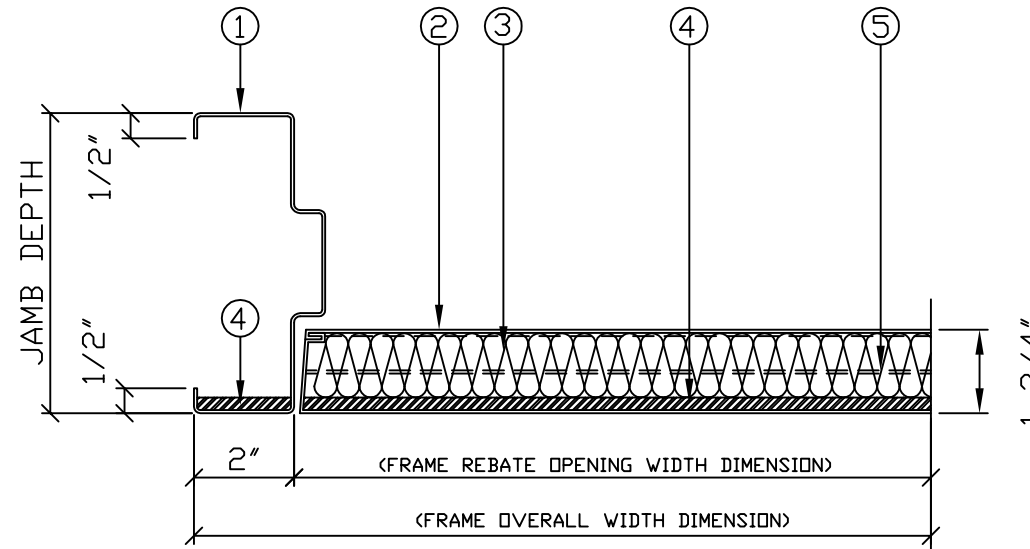
1. PRESSED STEEL FULLY WELDED BULLET RESISTANT FRAME.
2. HOLLOW METAL BULLET RESISTANT DOOR.
3. VOIDS FILLED WITH INSULATION.
4. ARMOUR SHIELD PLATE TO UL752. ARMOUR SHIELD MAY VARY IN THICKNESS AS REQUIRED TO ACHIEVE PERFORMANCE RATING.
5. HORIZONTAL STEEL STIFFENERS.



**NOTE:** - THE DOORS ARE SUPPLIED WITH A FLAT 2" WIDE OVERLAPPING ASTRAGAL LINED WITH ARMOUR SHIELD.



**ELEVATION**



**SECTION 'A'**

SIDELITE, BORROWED LITE, AND DOORS WITH VISION LITES ARE AVAILABLE. SEE VISION LITE DETAIL DRAWINGS ON WEBSITE FOR LEVELS 1 THROUGH 4. FOR OTHER OPTIONS, PLEASE CONSULT FACTORY.

**PRODUCT STANDARDS**

ALL PRODUCTS ARE TESTED AND CERTIFIED IN ACCORDANCE WITH UL 752. ALL DOORS AND FRAMES SHALL BE SUPPLIED IN GALV. MATERIAL WITH FULL FACTORY PRIME FINISH. ALL SHALL BE TEMPLATED, REINFORCED, AND DRILLED & TAPPED FOR MORTISED HARDWARE. TEMPLATING FOR SURFACE APPLIED HARDWARE SHALL BE BY OTHERS. ACCESS HOLES THROUGH THE ARMOUR SHIELD SHALL BE PROVIDED IN THE FACTORY FOR SURFACE APPLIED HARDWARE ON LEVELS 4 THROUGH 8 ONLY. FRAMES SHALL BE PROVIDED MITERED AND FULLY WELDED, INCLUDING BUMPERS, WALL ANCHORS, FLOOR CLIPS, AND SHALL BE SHIPPED WITH TEMPORARY SPREADERS FOR SUPPORT DURING SHIPPING. THE DOORS SHALL HAVE VISIBLE MECHANICALLY INTERLOCKING WELDED EDGE SEAMS. THE DOOR UNDERCUT IS 3/4", UNLESS HARDWARE TEMPLATING DICTATES OTHERWISE OR SPECIFICALLY NOTED BY ARCHITECT OR CUSTOMER.

**PRODUCT OPTIONS**

- TACK & FILLED "SEAMLESS EDGE SEAMS
- FLUSH CLOSED TOP CAP
- FLUSH CLOSED BOTTOM CAP