



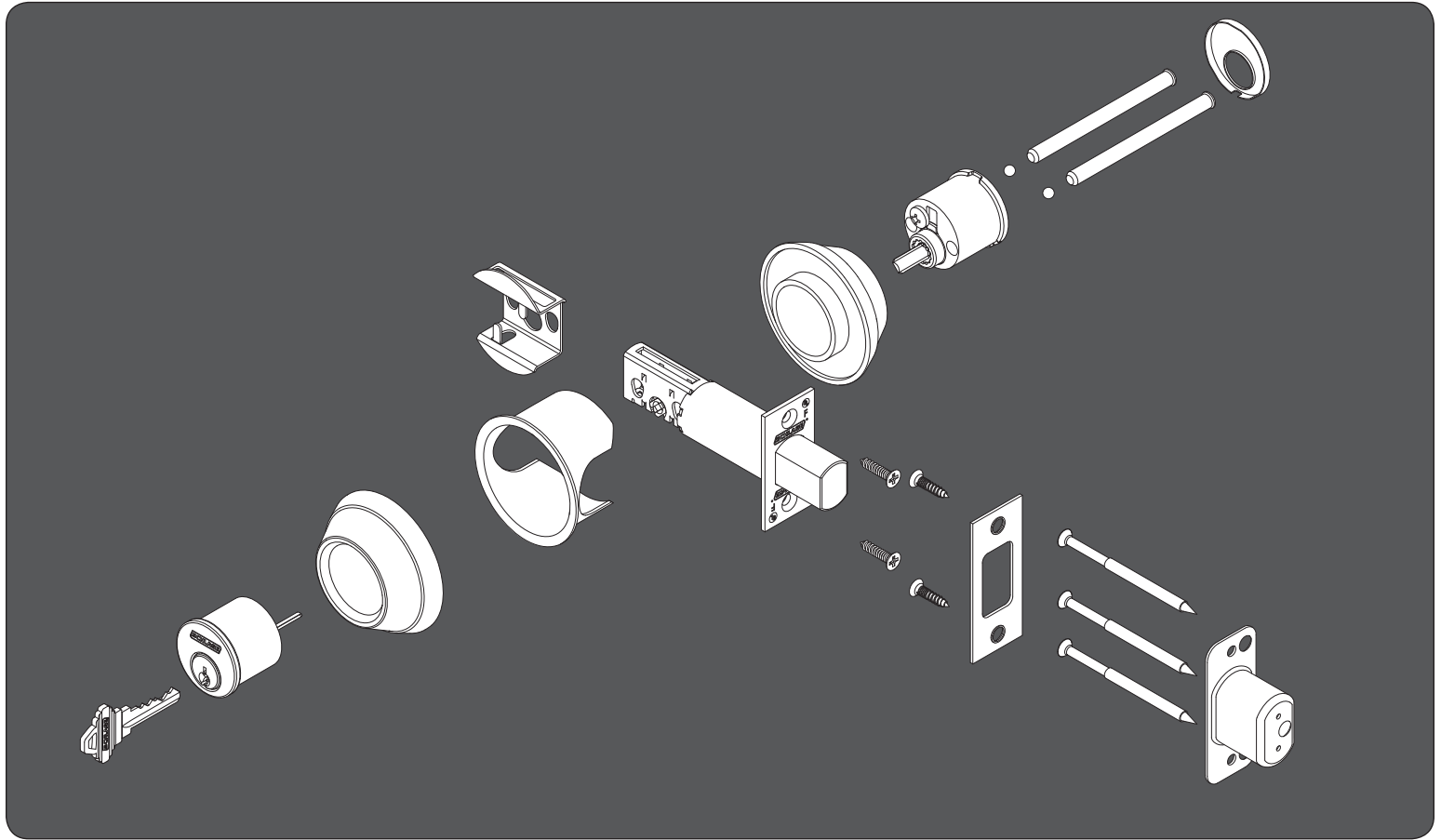
P513-611

B-SERIES DOUBLE CYLINDER DEADBOLT
INSTALLATION INSTRUCTIONS
MODELS B662/762/862

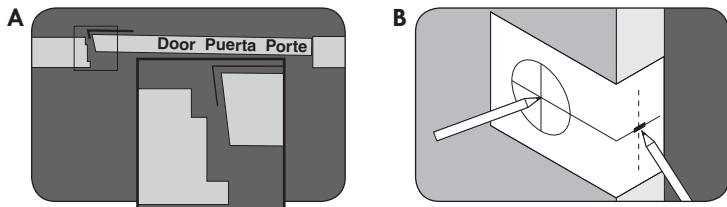
CERROJO CILÍNDRICO DOBLE SERIE B
INSTRUCCIONES DE INSTALACIÓN
MODELOS B662/762/862

PÊNE DORMANT À DOUBLE CYLINDRE DE SÉRIE B

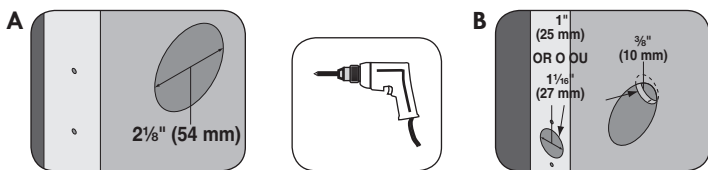
INSTRUCTIONS D'INSTALLATION
MODÈLES B662/762/862



1 MARK DOOR WITH TEMPLATE.
MARQUE LA PUERTA CON LA PLANTILLA.
TRACEZ LA GABARIT SUR LA PORTE.

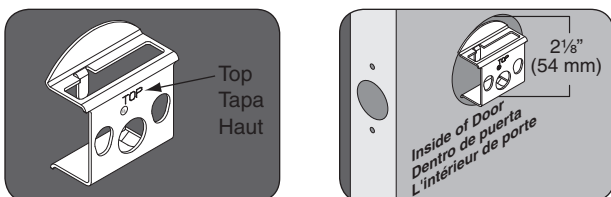


2 DRILL 2 HOLES.
TALADRE (2) AGUJEROS.
TRACEZ LA GABARIT SUR LA PORTE.

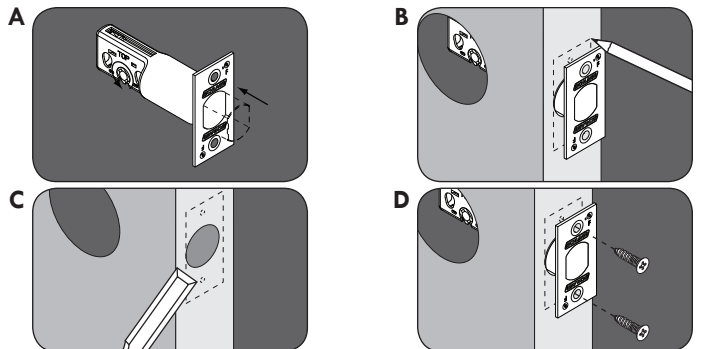


1" (25mm) for deadbolt, or 1 1/16" (27 mm) for circular bolt
1" (25mm) para cerrojo de seguridad, o 1 1/16" (27 mm) para perno circular
25 mm (1 po) pour le pêne dormant, ou 27 mm (1 1/16 po) pour boulon rond

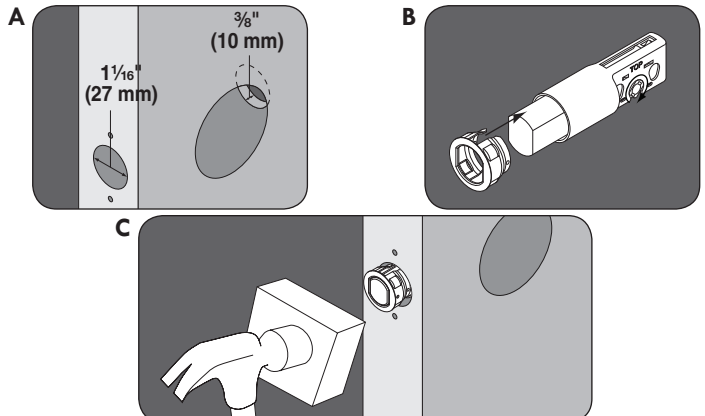
3 INSTALL FIRE CUP (2 1/8" THROUGH BORE ONLY).
INSTALAR EL PROTECTOR CONTRA INCENDIOS (SOLO NÚCLEO PASANTE DE 54 MM [2-1/8 PULG.]).
INSTALLEZ LA COUPOLE CONTRE L'INCENDIE (2 1/8 PO À TRAVERS L'ALÉSAGE SEULEMENT).



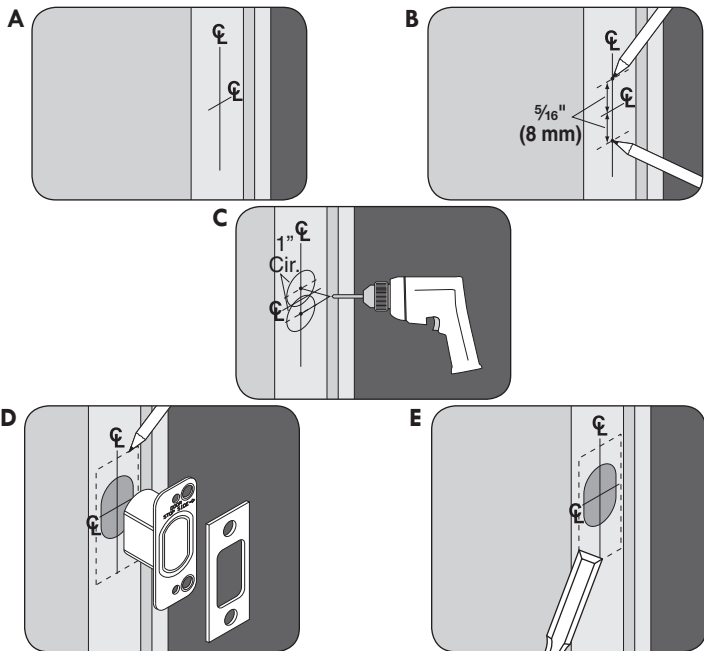
4 INSTALL DEADBOLT
INSTALACIÓN DEL CERROJO DE SEGURIDAD
INSTALLEZ LE PÊNE DORMANT



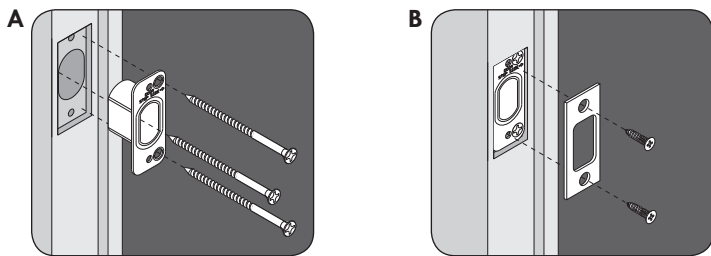
INSTALL CIRCULAR DRIVE-IN DEADBOLT.
INSTALE EL CERROJO CIRCULAR DE SEGURIDAD.
INSTALLEZ LE PÊNE DORMANT CIRCULAIRE.



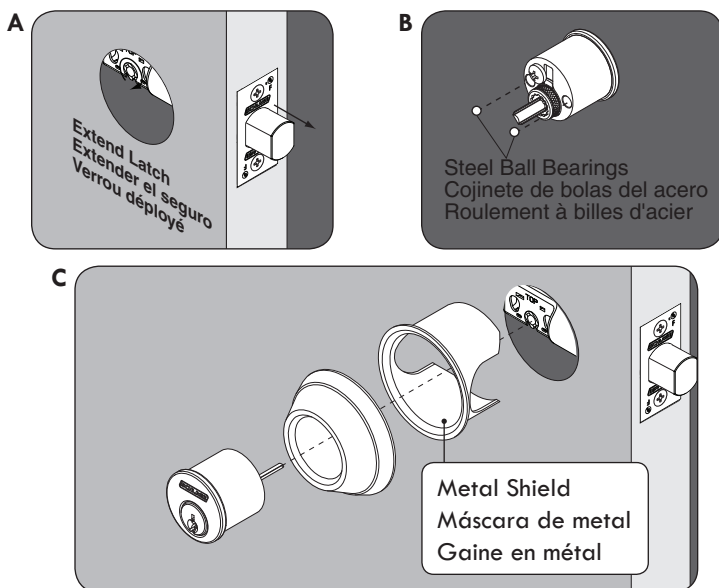
**5 PREPARE DOOR JAMB.
PREPARE LA JAMBA DE LA PUERTA.
PRÉPAREZ LE JAMBAGE DE LA PORTE.**



**6 INSTALL STRIKE ASSEMBLY.
INSTALE EL CONJUNTO DE PIEZAS DEL RECIBIDOR.
INSTALLEZ LES PIÈCES DE LA GÂCHE.**



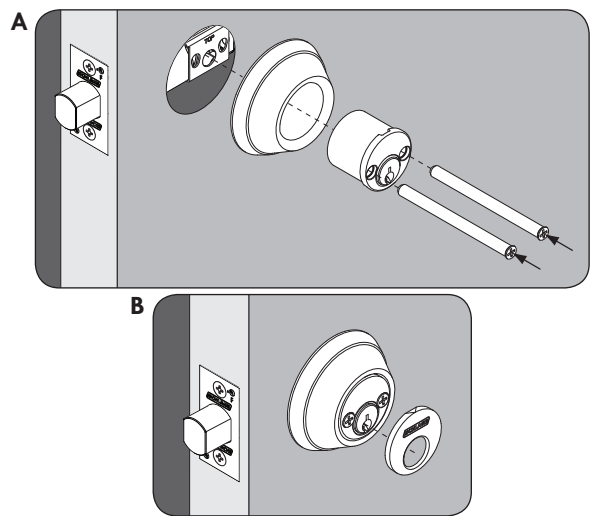
**7 INSTALL OUTSIDE LOCK.
INSTALE LA CERRADURA EXTERIOR.
INSTALLEZ LE VERROU EXTÉRIEUR.**

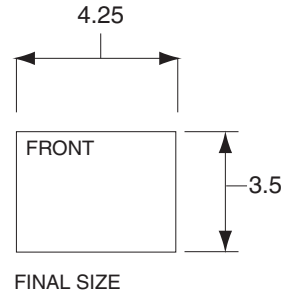
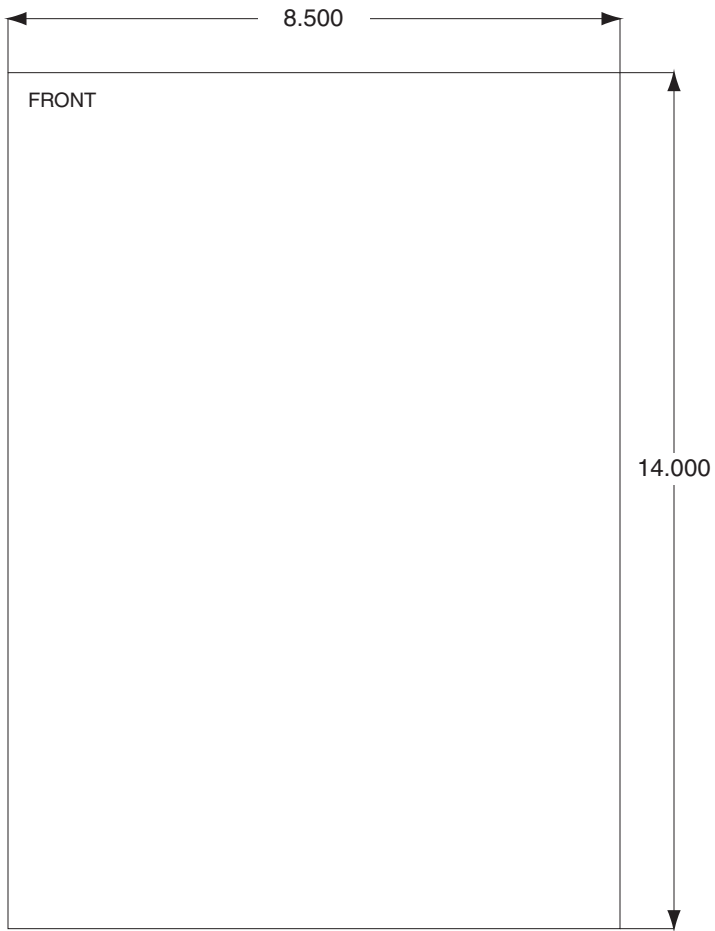


⚠ IMPORTANT NOTES ⚠

Do not use metal shield in existing 1½" (38 mm) hole installations.
Si utiliza un agujero previamente taladrado de 38mm, no haga uso de la rodela metálica incluida.
S'il existe déjà un trou de 38mm, ne pas utiliser la gaine de sécurité fournie.

**8 INSTALL INSIDE LOCK.
INSTALE LA CERRADURA INTERIOR.
INSTALLEZ LE VERROU INTÉRIEUR.**





BEGINNING SHEET

Additional Notes:
None

Revision History						Revision Description:					
A	B	C	D	E	F	C > Revised Sheet 2 Artwork					
N/A	N/A	035619	EC #	EC #	EC #						
Material						Edited By		Approved By		EC Number	Release Date
White Paper						D. Myers		P. Bockelman		035619	05-06-13
Notes						Title SHEET INSTRUCTION B662 SERIES					
<ol style="list-style-type: none"> printed both side printed black tolerance: ± .16 see sheet 2 for artwork printed in country may vary drawings not to scale 						Creation Date	Number			Revision	
						09-30-94	P513-611			C	
						Created By		Activity		Ingersoll Rand Copyright © 2013	
ELN		3899 Hancock Expwy Security, CO 80911									
						Software: Illustrator CS4					