



P513-610



# B-SERIES SINGLE CYLINDER DEADBOLT

## INSTALLATION INSTRUCTIONS

MODELS B660/760/860, B661/761/861

# CERROJO CILÍNDRICO SIMPLE SERIE B

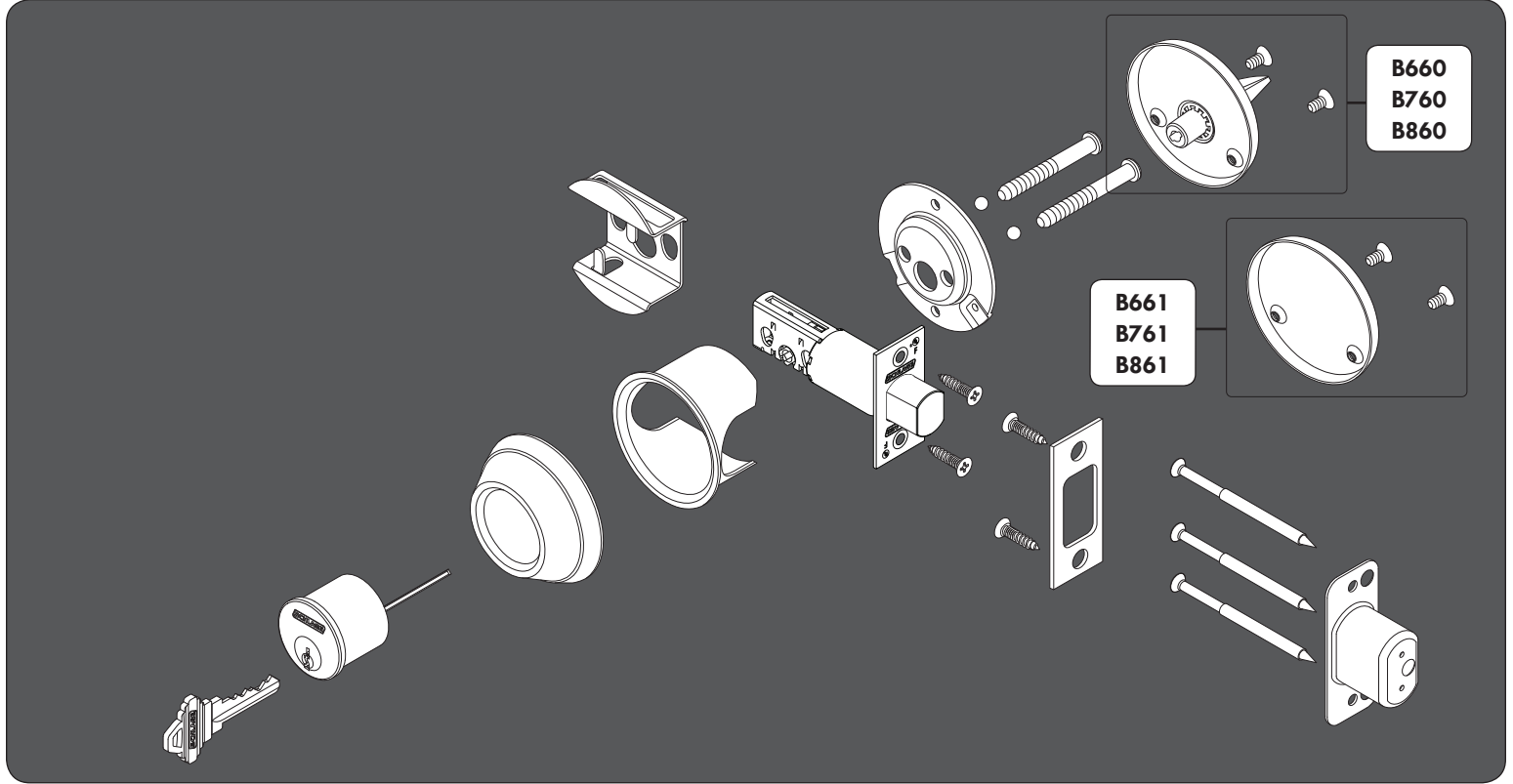
## INSTRUCCIONES DE INSTALACIÓN

MODELOS B660/760/860, B661/761/861

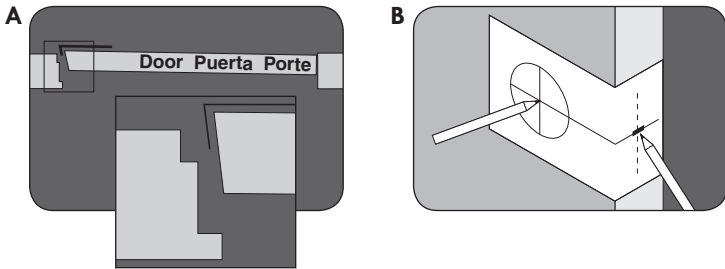
# MONOCYLINDRE DE SÉRIE B

## INSTRUCTIONS D'INSTALLATION

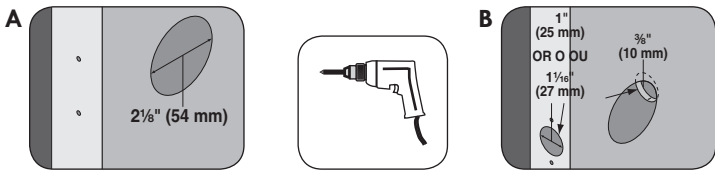
MODÈLES B660/760/860, B661/761/861



**1 MARK DOOR WITH TEMPLATE.**  
MARQUE LA PUERTA CON LA PLANTILLA.  
TRACEZ LA GABARIT SUR LA PORTE.

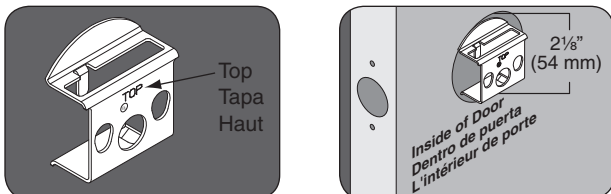


**2 DRILL 2 HOLES.**  
TALADRE (2) AGUJEROS.  
TRACEZ LA GABARIT SUR LA PORTE.

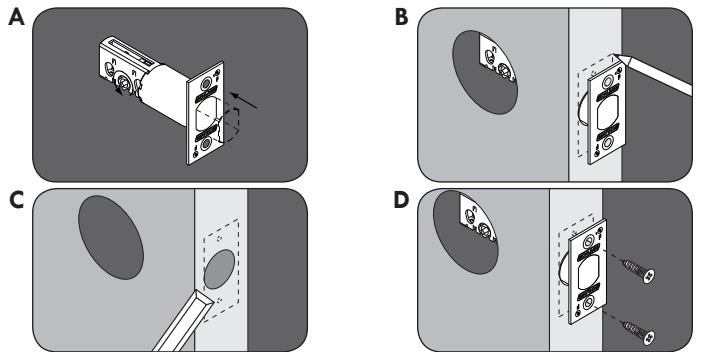


1" (25mm) for deadbolt, or 1 1/16" (27 mm) for circular bolt  
1" (25mm) para cerrojo de seguridad, o 1 1/16" (27 mm) para perno circular  
25 mm (1 po) pour le pêne dormant, ou 27 mm (1 1/16 po) pour boulon rond

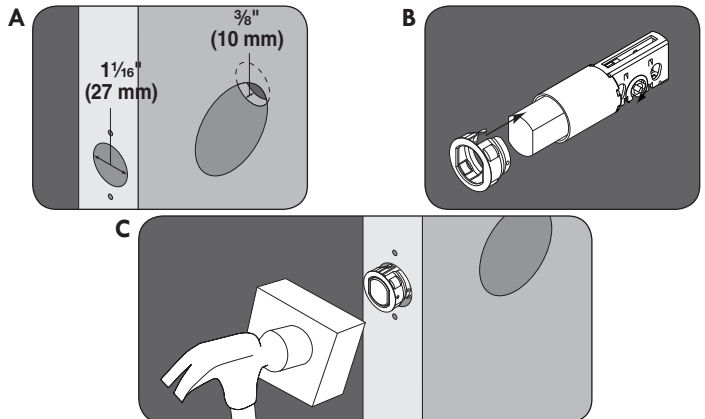
**3 INSTALL FIRE CUP (2 1/8" THROUGH BORE ONLY).**  
INSTALAR EL PROTECTOR CONTRA INCENDIOS (SOLO NÚCLEO PASANTE DE 54 MM [2-1/8 PULG.]).  
INSTALLEZ LA COUPOLE CONTRE L'INCENDIE (2 1/8 PO À TRAVERS L'ALÉSAGE SEULEMENT).



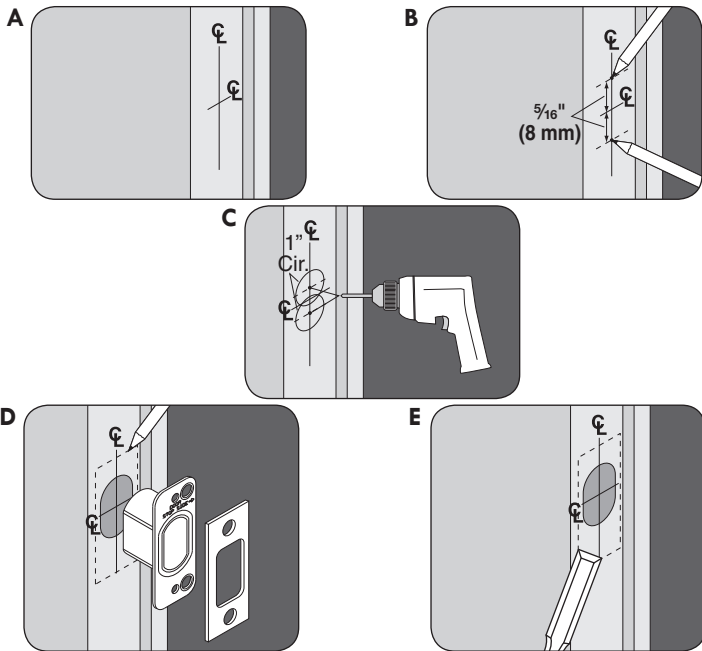
**4 INSTALL DEADBOLT**  
INSTALACIÓN DEL CERROJO DE SEGURIDAD  
INSTALLEZ LE PÈNE DORMANT



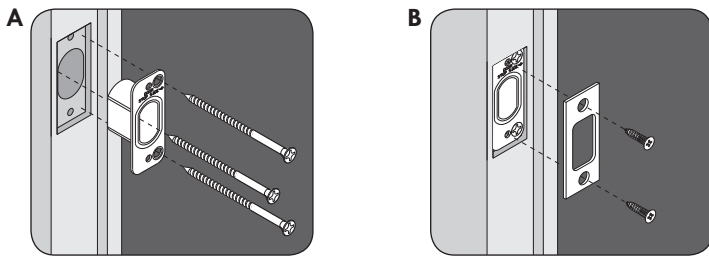
**INSTALL CIRCULAR DRIVE-IN DEADBOLT.**  
INSTALE EL CERROJO CIRCULAR DE SEGURIDAD.  
INSTALLEZ LE PÈNE DORMANT CIRCULAIRE.



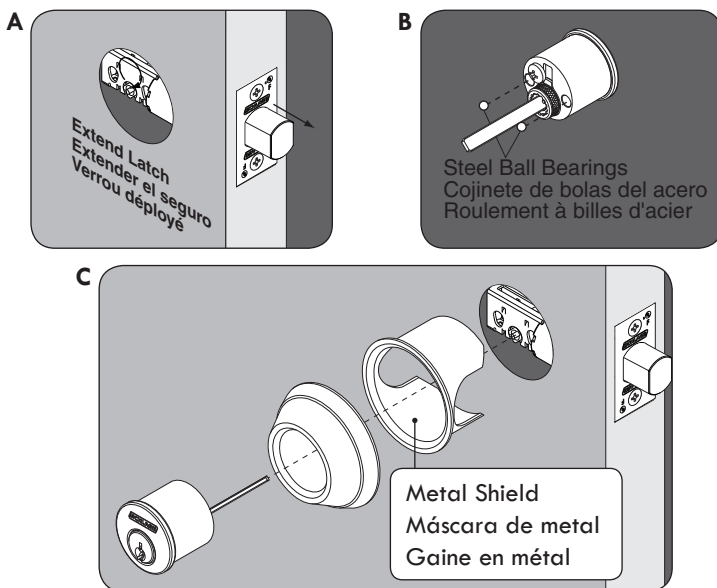
**5** PREPARE DOOR JAMB.  
PREPARE LA JAMBA DE LA PUERTA.  
PRÉPAREZ LE JAMBAGE DE LA PORTE.



**6** INSTALL STRIKE ASSEMBLY.  
INSTALE EL CONJUNTO DE PIEZAS DEL RECIBIDOR.  
INSTALLEZ LES PIÈCES DE LA GÂCHE.



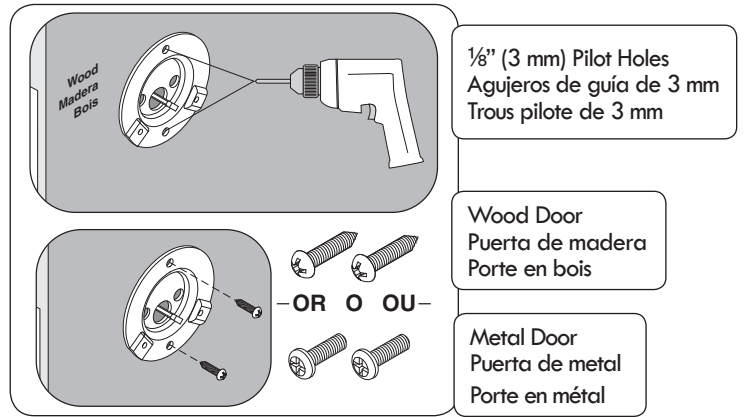
**7** INSTALL OUTSIDE LOCK.  
INSTALAR LA CERRADURA EXTERIOR.  
INSTALLEZ LE VERROU EXTÉRIEUR.



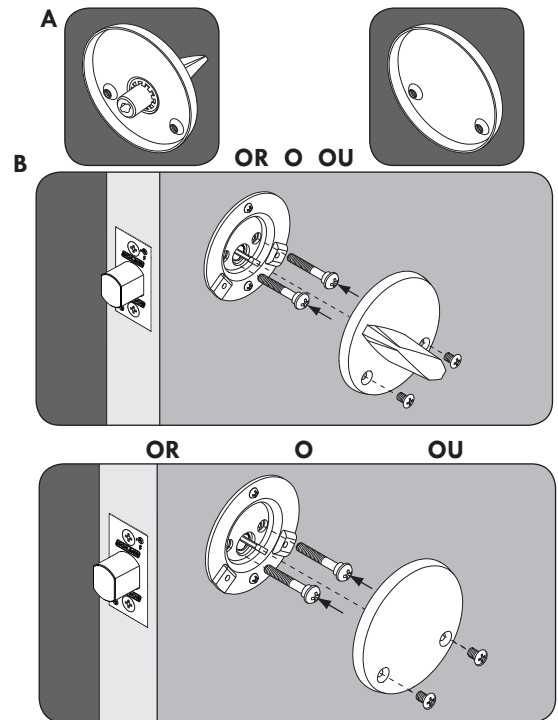
**⚠ IMPORTANT NOTES ⚠**

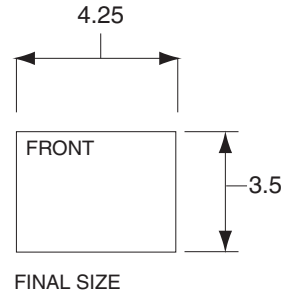
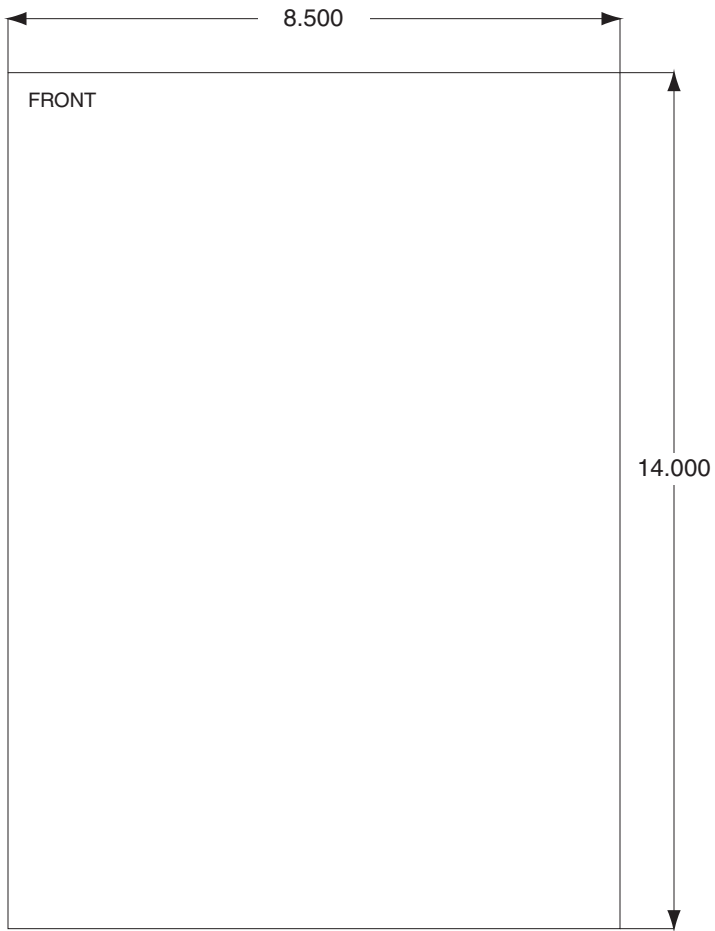
Do not use metal shield in existing 1 1/2" (38 mm) hole installations.  
Si utiliza un agujero previamente taladrado de 38mm, no haga uso de la rodela metálica incluida.  
S'il existe déjà un trou de 38mm, ne pas utiliser la gaine de sécurité fournie.

**8** INSTALL MOUNTING PLATE (1 1/2" THROUGH BORE ONLY).  
INSTALAR LA PLACA DE MONTAJE (SOLO NÚCLEO PASANTE DE 38 MM [1-1/2 PULG.]).  
INSTALLEZ LA PLAQUE DE FIXATION (1 1/2 PO À TRAVERS L'ALÉSAGE SEULEMENT).



**9** INSTALL THUMBTURN.  
INSTALE EL PERNO MARIPOSA.  
INSTALLEZ LE VERROU POUCIER.





BEGINNING SHEET

Additional Notes:
None

Revision History						Revision Description:						
A	B	C	D	E	F	C > Revised Sheet 2 Artwork						
N/A	N/A	035619	EC #	EC #	EC #							
Material						Edited By		Approved By		EC Number	Release Date	
White Paper						D. Myers		P. Bockelman		035619	05-06-13	
Notes						Title SHEET INST B600/B661 SERIES						
1. printed both side 2. printed black 3. tolerance: ± .16 4. see sheet 2 for artwork 5. printed in country may vary 6. drawings not to scale						Creation Date		Number			Revision	
						09-30-94		P513-610			C	
						Created By		Activity		Ingersoll Rand Copyright © 2013		
ELN		3899 Hancock Expwy Security, CO 80911										
						Software: Illustrator CS4						