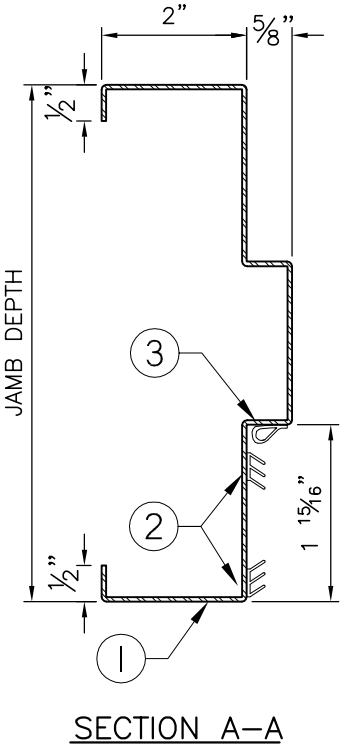
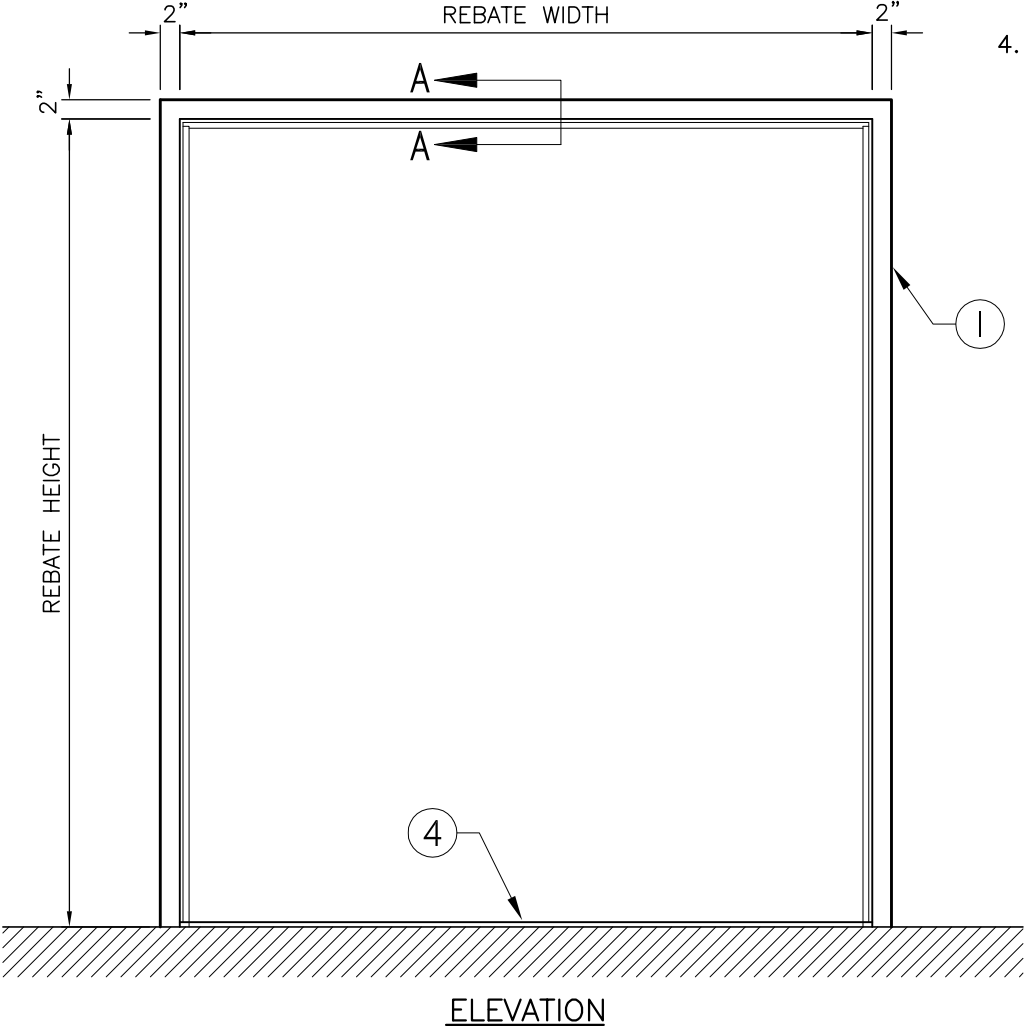


LEGEND :

- 1. PRESSED STEEL ACOUSTIC FRAME.
- 2. ACOUSTIC PERIMETER SEAL TO BE FITTED AND FASTENED TO JAMBS AND HEAD BY INSTALLER ON SITE.
- 3. ACOUSTIC PERIMETER BULB SEAL TO BE FITTED AND FASTENED TO JAMBS AND HEAD BY INSTALLER ON SITE.
- 4. ¼" HIGH FLAT ACOUSTIC THRESHOLD 5" WIDTH, TO BE INSTALLED ON FINISHED FLOOR.

STOCK ACOUSTIC FRAMES FOR PAIRED OPENINGS. AVAILABLE IN STC-33 THROUGH STC 50. STOCK FRAME SIZE IS 6'-0"x7'-0" TO FIT 1-3/4" DOOR, WITH A JAMB DEPTH OF 5-7/8" OR 7-1/8" ONLY. FRAME IS TEMPLATED FOR 4.5"x.180" MORTISED HINGES, AND REINFORCED FOR SURFACE CLOSER AND SURFACE BOLTS. COMPLETE DOOR AND FRAME UNITS ARE SUPPLIED WITH ACOUSTIC PERIMETER SEALS, DOOR BOTTOMS, THRESHOLD & ASTRAGAL (ON ACTIVE) OPTIONS AVAILABLE: SOME ADDITIONAL HARDWARE PREPARATIONS.(CONSULT FACTORY)

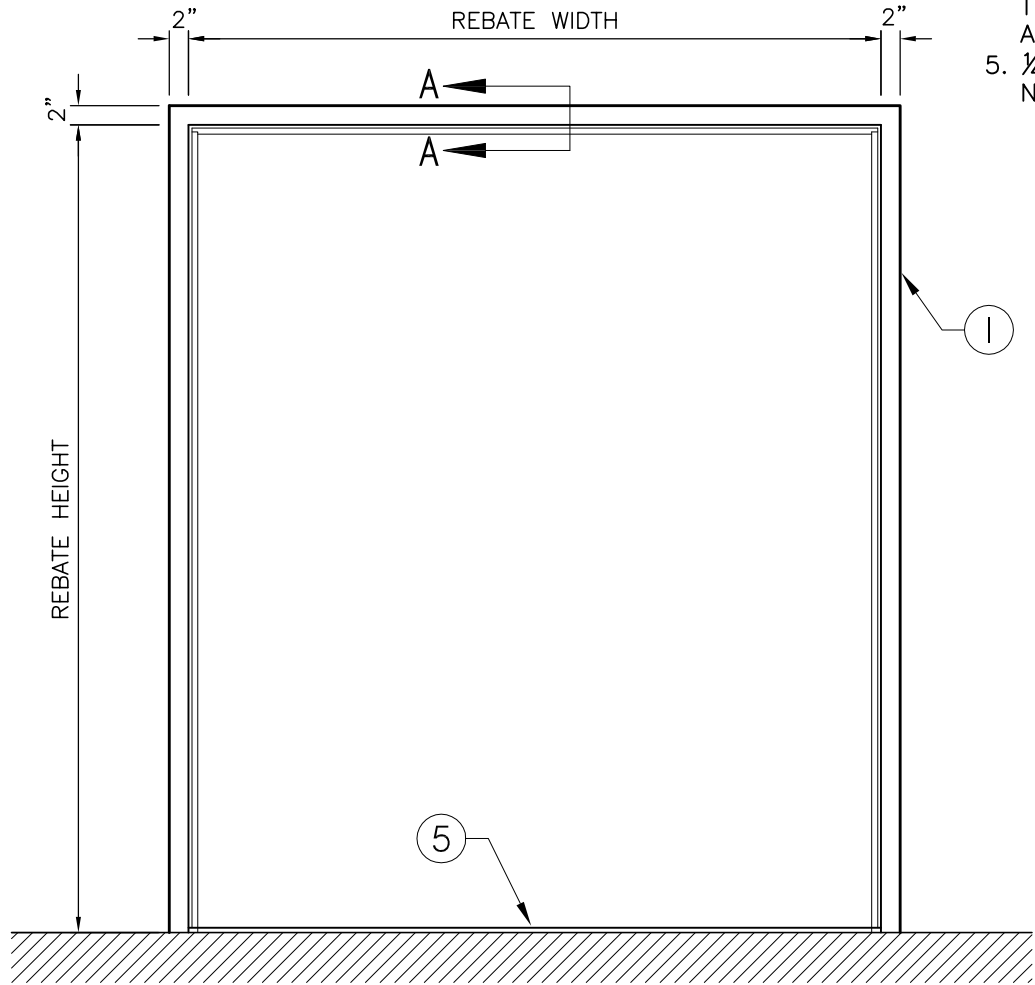


NOTE:
FRAME MUST BE INSTALLED AT FINISHED FLOOR HEIGHT.
(DO NOT EMBED IN FLOOR)

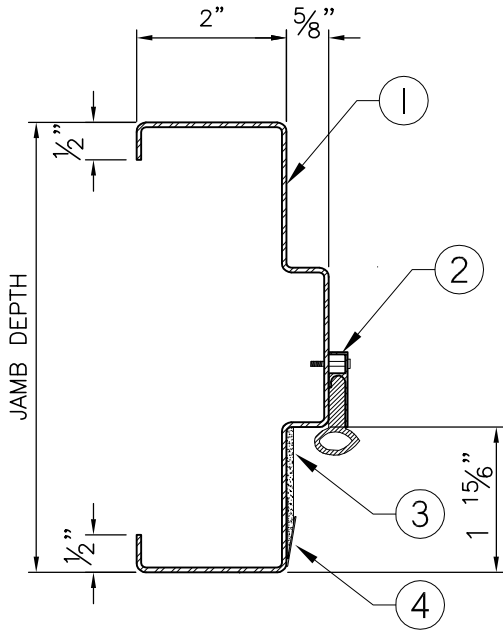
LEGEND:

1. PRESSED STEEL ACOUSTIC FRAME.
2. ACOUSTIC PERIMETER SEALS TO BE FITTED AND FASTENED TO JAMBS AND HEAD AT SITE.
3. ACOUSTIC NEOPRENE AT HEADER ONLY. (SHIPPED LOOSE)
4. SECONDARY PERIMETER ACOUSTIC SEAL FOR STC 39 THROUGH STC 49 TO BE FITTED AND FASTENED TO JAMBS AND HEAD BY INSTALLER ON SITE.
5. 1/4" HIGH FLAT ACOUSTIC THRESHOLD 5" WIDTH, TO BE INSTALLED ON FINISHED FLOOR.

STOCK ACOUSTIC FRAMES FOR PAIRED OPENINGS. AVAILABLE IN STC-33 THROUGH STC 50. STOCK FRAME SIZE IS 6'-0"x7'-0" TO FIT 1-3/4" DOOR, WITH A JAMB DEPTH OF 5-7/8" OR 7-1/8" ONLY. FRAME IS TEMPLATED FOR 4.5"x.180" MORTISED HINGES, AND REINFORCED FOR SURFACE CLOSER AND SURFACE BOLTS. COMPLETE DOOR AND FRAME UNITS ARE SUPPLIED WITH ACOUSTIC PERIMETER SEALS, DOOR BOTTOMS, THRESHOLD & ASTRAGAL (ON ACTIVE) OPTIONS AVAILABLE: SOME ADDITIONAL HARDWARE PREPARATIONS.(CONSULT FACTORY)



ELEVATION

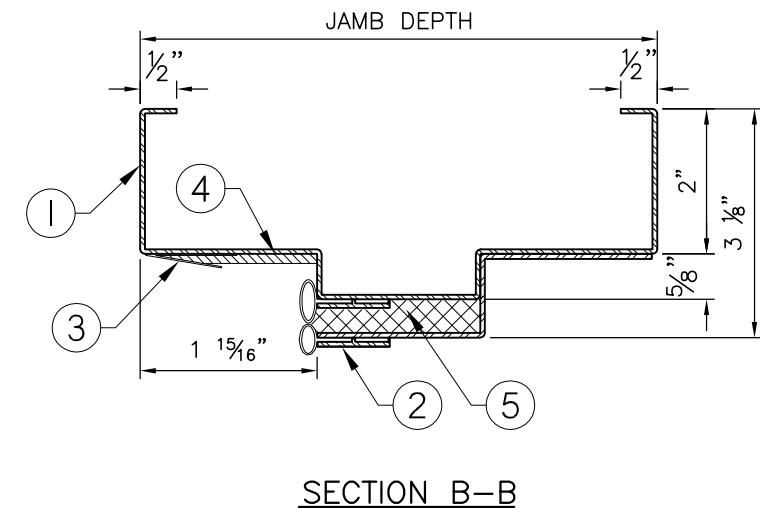


TYPICAL JAMB SECTION

NOTE:
FRAME MUST BE INSTALLED AT FINISHED FLOOR HEIGHT.
(DO NOT EMBED IN FLOOR)

JOB NO:	
SHEET: 1	OF: 1

STOCK ACOUSTIC FRAMES FOR PAIRED OPENINGS. AVAILABLE IN STC-33 THROUGH STC 50. STOCK FRAME SIZE IS 6'-0"x7'-0" TO FIT 1-3/4" DOOR, WITH A JAMB DEPTH OF 5-7/8" OR 7-1/8" ONLY. FRAME IS TEMPLATED FOR 4.5"x.180" MORTISED HINGES, AND REINFORCED FOR SURFACE CLOSER AND SURFACE BOLTS. COMPLETE DOOR AND FRAME UNITS ARE SUPPLIED WITH ACOUSTIC PERIMETER SEALS, DOOR BOTTOMS, THRESHOLD & ASTRAGAL (ON ACTIVE) OPTIONS AVAILABLE: SOME ADDITIONAL HARDWARE PREPARATIONS.(CONSULT FACTORY)



NOTE:
FRAME MUST BE INSTALLED AT FINISHED FLOOR HEIGHT.
(DO NOT EMBED IN FLOOR)