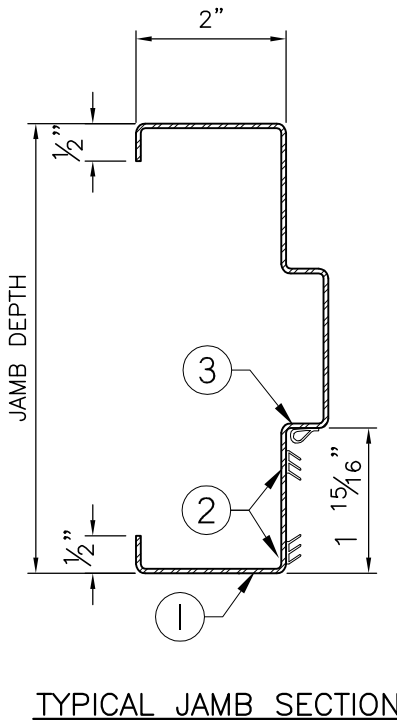


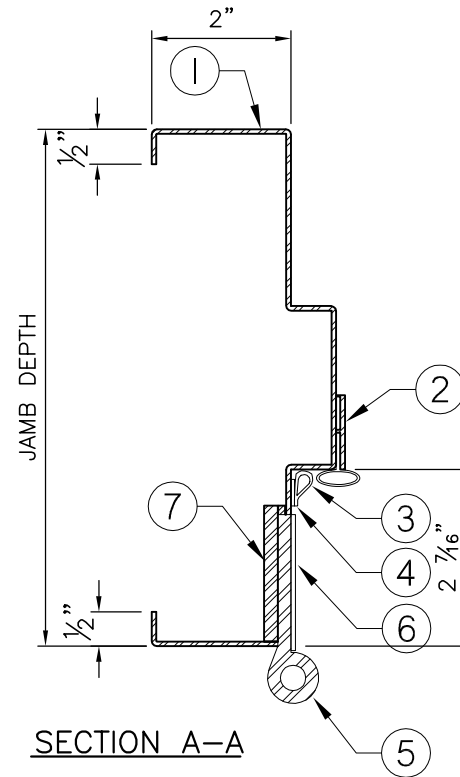
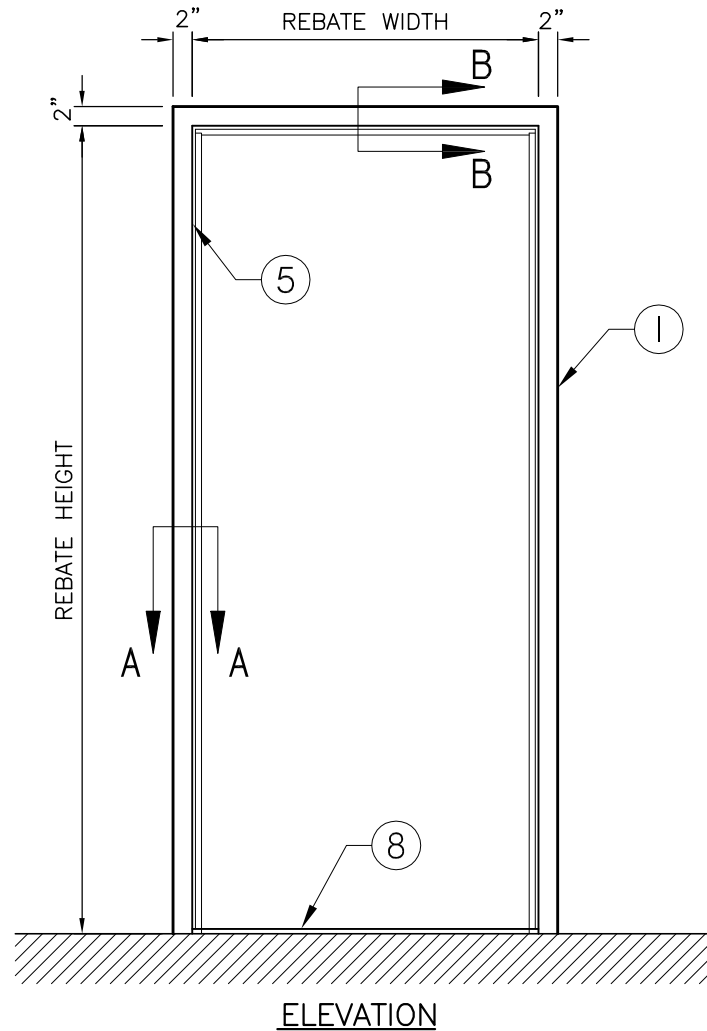
## 2012/03/08

OF: 1



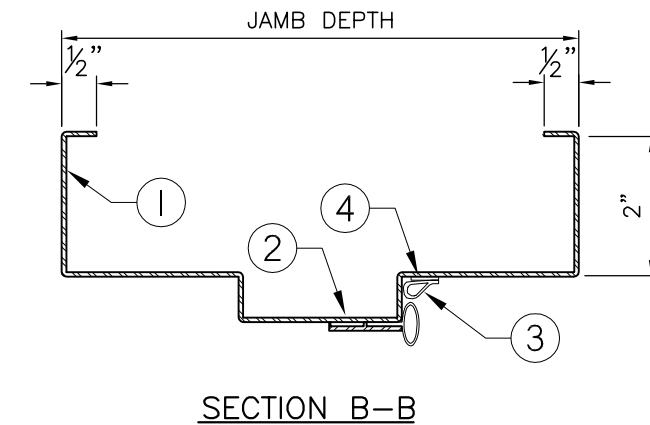
1. PRESSED STEEL ACOUSTIC FRAME.
2. ACOUSTIC PERIMETER SEAL TO BE FITTED AND FASTENED TO JAMBS AND HEAD BY INSTALLER ON SITE.
3. ACOUSTIC PERIMETER BULB SEAL TO BE FITTED AND FASTENED TO JAMBS AND HEAD BY INSTALLER ON SITE.
4. 1/2" HIGH STEPPED ACOUSTIC THRESHOLD 5" WIDTH, TO BE INSTALLED ON FINISHED FLOOR.

**NOTE:**  
FRAME MUST BE INSTALLED AT FINISHED FLOOR HEIGHT.  
(DO NOT EMBED IN FLOOR)



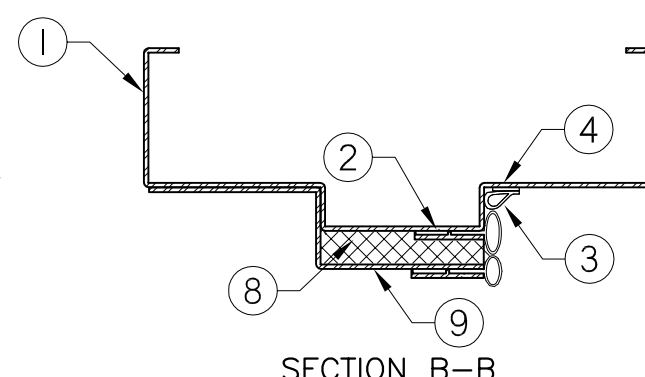
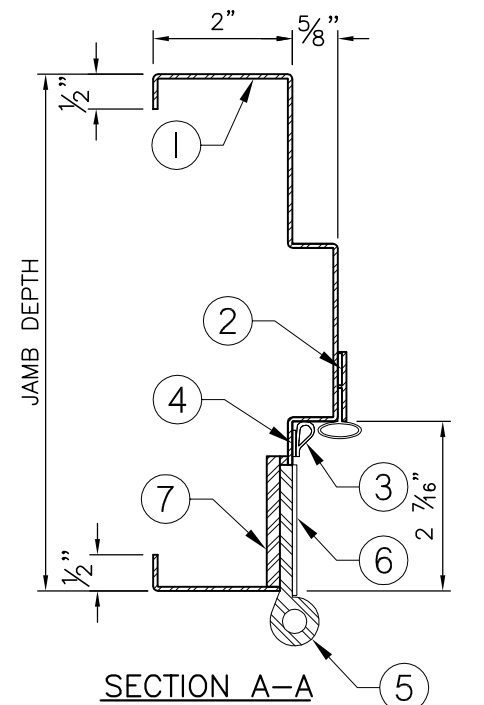
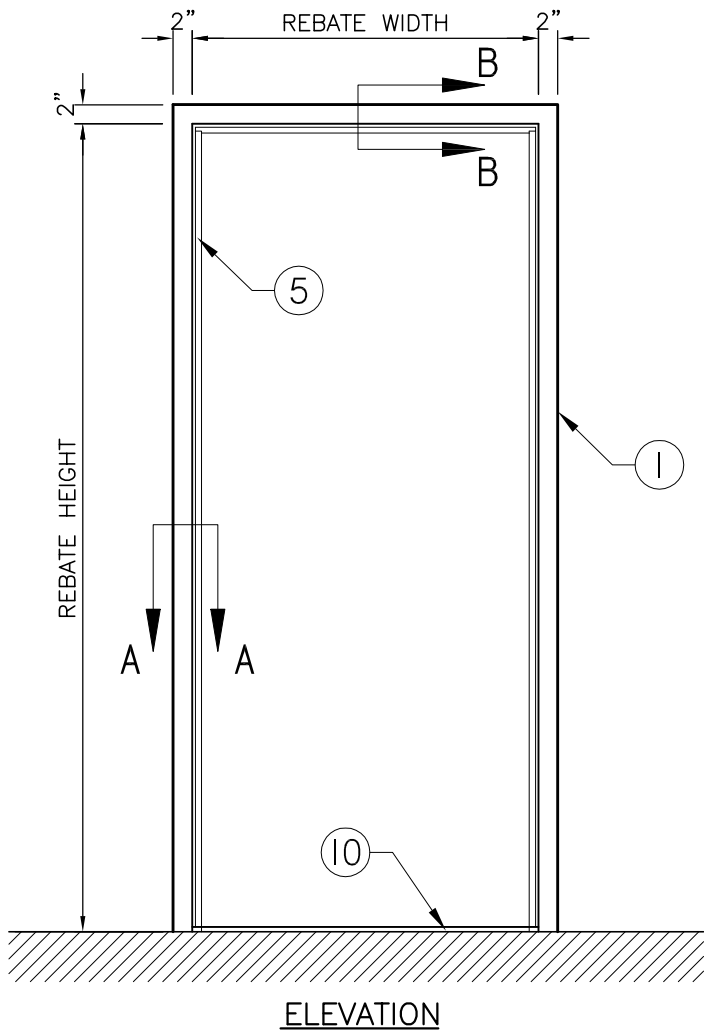
LEGEND :

1. PRESSED STEEL ACOUSTIC FRAME.
2. FIRE RATED PERIMETER SYNPRENE SEAL SHIPPED BY AMBICO, INSTALLED ON SITE BY OTHERS.
3. PERIMETER SMOKE SEAL, SHIPPED BY AMBICO, INSTALLED ON SITE BY OTHERS.
4. INTUMESCENT STRIP, SHIPPED BY AMBICO, INSTALLED ON SITE BY OTHERS.
5. HINGES, BY OTHERS.
6. INTUMESCENT HINGE PROTECTION , SHIPPED BY AMBICO, INSTALLED ON SITE BY OTHERS.
7. HINGE REINFORCEMENT, FACTORY WELDED IN FRAME.
8. 1/2" HIGH STEPPED ACOUSTIC THRESHOLD 5" WIDTH, TO BE INSTALLED ON FINISHED FLOOR.



NOTES :

- FRAME MUST BE INSTALLED AT FINISHED FLOOR HEIGHT.
- (DO NOT EMBED IN FLOOR).



- LEGEND :**
- 1. PRESSED STEEL ACOUSTIC FRAME.
  - 2. FIRE RATED PERIMETER SYNPRENE SEAL SHIPPED BY AMBICO, INSTALLED ON SITE BY OTHERS.
  - 3. PERIMETER SMOKE SEAL, SHIPPED BY AMBICO, INSTALLED ON SITE BY OTHERS.
  - 4. INTUMESCENT STRIP, SHIPPED BY AMBICO, INSTALLED ON SITE BY OTHERS.
  - 5. HINGES, BY OTHERS.
  - 6. INTUMESCENT HINGE PROTECTION , SHIPPED BY AMBICO, INSTALLED ON SITE BY OTHERS.
  - 7. HINGE REINFORCEMENT, FACTORY WELDED IN FRAME.
  - 8. ACOUSTIC ABSORPTION CHAMBER.
  - 9. BRACKET AND ADDITIONAL PERIMETER SEALS TO BE FITTED AND FASTENED TO HEADER AT SITE.
  - 10. 1/2" HIGH STEPPED ACOUSTIC THRESHOLD 5" WIDTH, TO BE INSTALLED ON FINISHED FLOOR.

**NOTES :**  
— FRAME MUST BE INSTALLED AT FINISHED FLOOR HEIGHT.  
(DO NOT EMBED IN FLOOR).