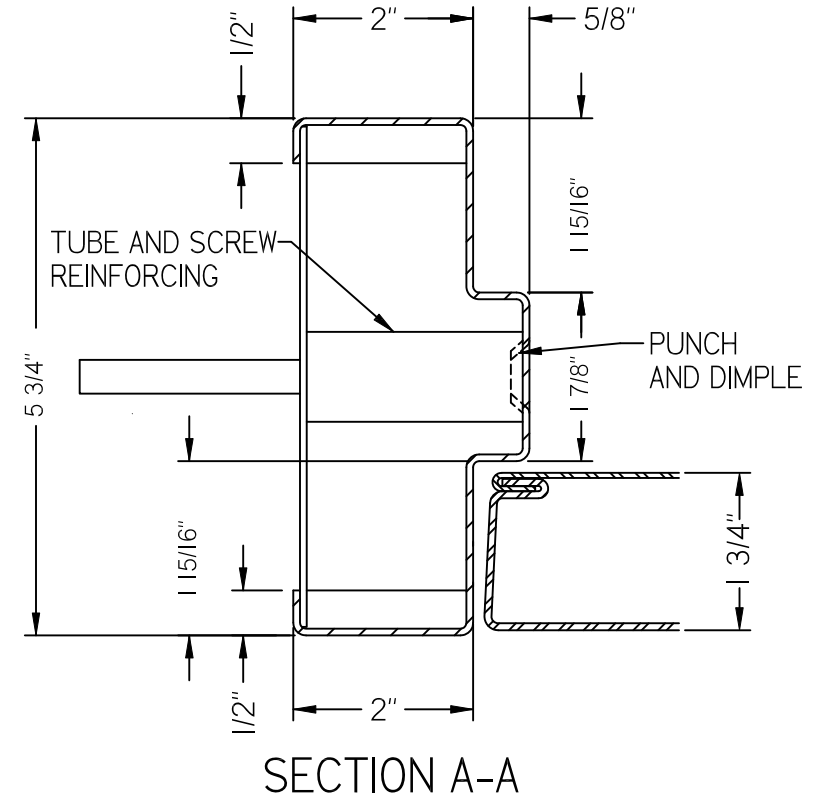
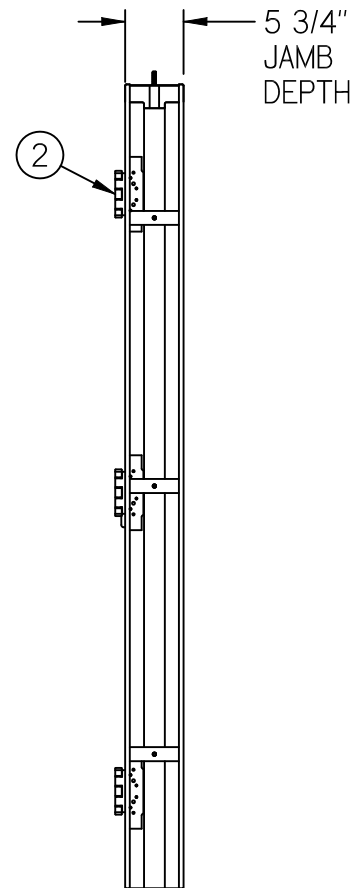
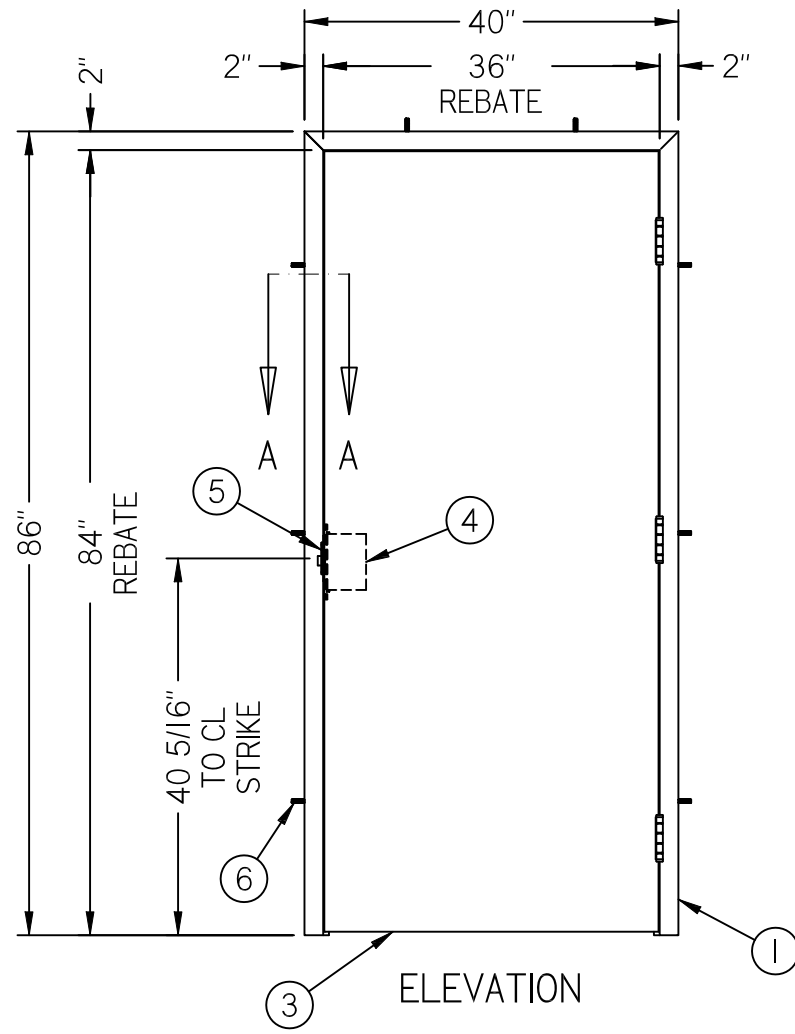


NOTES:

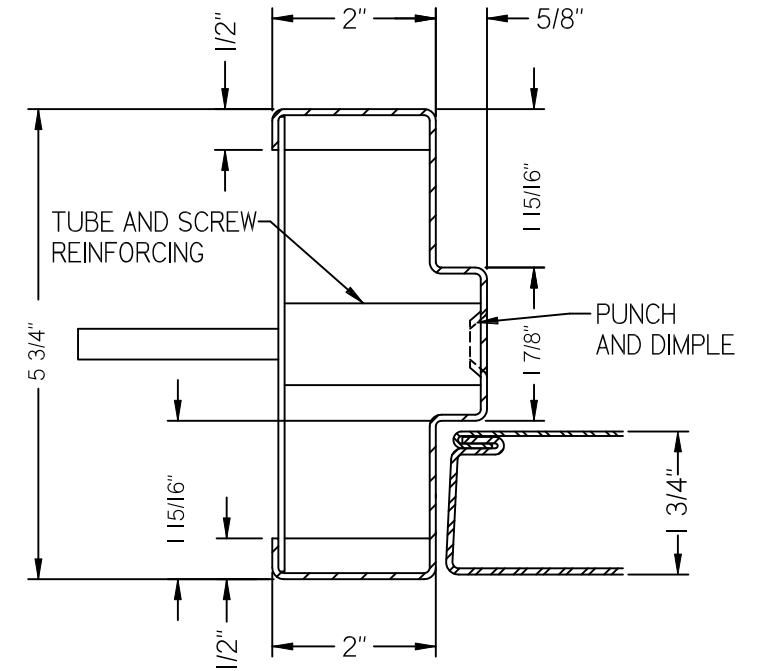
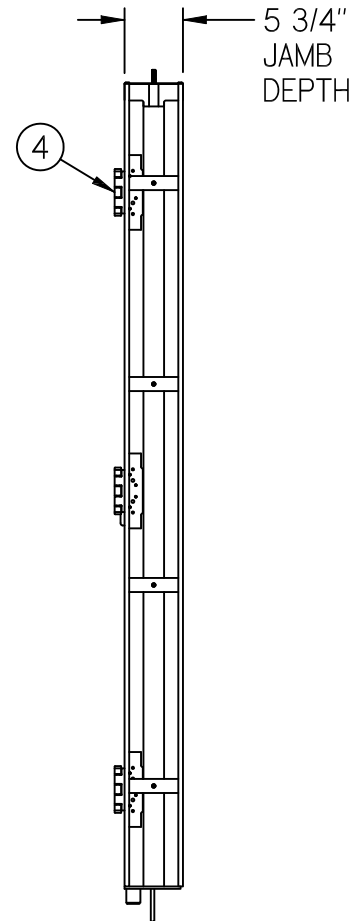
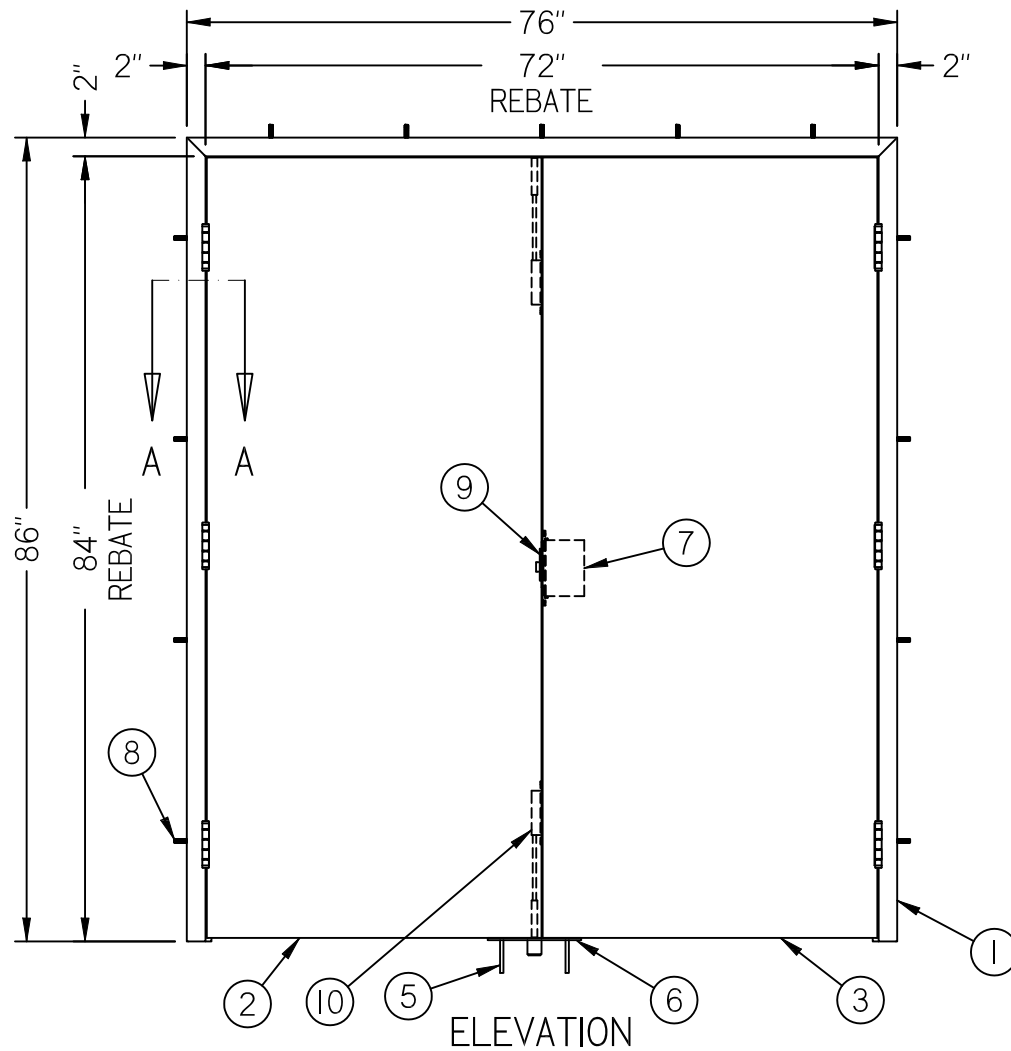
1. ARCHITECT AND/OR CONTRACTOR TO ENSURE WALL CAN RESIST APPLIED LOADING.
2. QUANTITY OF SCREWS OR CONCRETE ANCHORS AND THEIR LOCATION DEPENDS ON WALL CONSTRUCTION AND THUS ARE SUBJECT TO CHANGE



Item No.	Title
1	1 psi Frame
2	4 1/2" x 4 1/2" Heavy Weight Hinge
3	1 psi Door
4	Mortise Lock or Exit Device
5	Blast Reinforced Strike
6	Machine Screw or Concrete Anchor

NOTES:

1. ARCHITECT AND/OR CONTRACTOR TO ENSURE WALL CAN RESIST APPLIED LOADING
2. QUANTITY OF SCREWS OR CONCRETE ANCHORS AND THEIR LOCATION DEPENDS ON WALL CONDITIONS AND THUS ARE SUBJECT TO CHANGE



Item NO.	Title
1	1 psi Frame - Pair
2	1 psi Inactive Door
3	1 psi Active Door
4	4 1/2" x 4 1/2" Heavy Weight Hinge
5	Flat Head Concrete Anchor
6	1 psi Floor Plate
7	Mortise Lock or Exit Device
8	Machine Screw or Concrete Anchor
9	Blast-Reinforced Strike
10	Manual Flush Bolt