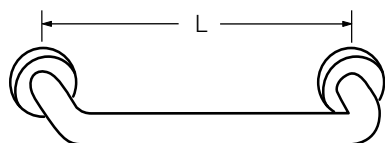




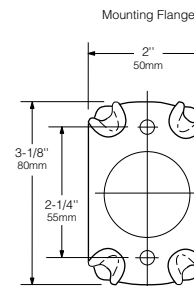
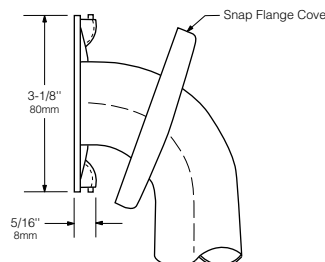
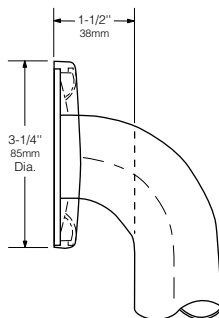
# Technical Data

# EXTRA-HEAVY-DUTY TOWEL BARS WITH CONCEALED MOUNTING AND SNAP FLANGE

# B-530



Model No.	Bar Length L
B-530 x 18	18" (455mm)
B-530 x 24	24" (610mm)



### MATERIALS:

**Towel Bar** — 18-8 S, type-304, 18-gauge (1.2mm) stainless steel tubing with satin finish. 1" (25mm) outside diameter. Ends are welded to flanges. Clearance between the towel bar and wall is 1-1/2" (38mm).

**Concealed Mounting Flanges** — 18-8 S, type-304, 1/8" (3mm) thick, stainless steel plate. 2" x 3-1/8" (50 x 80mm) with two holes for attachment to wall.

**Snap Flange Covers** — 18-8 S, type-304, 22-gauge (0.8mm) drawn stainless steel with bright polish finish. 3-1/4" (85mm) diameter x 5/8" (16mm) deep. Each cover snaps over mounting flange to conceal mounting screws.

### STRENGTH:

Towel bar will support loads in excess of 900 pounds (408-kg) if properly installed.

**Caution:** Towel bars are no stronger than the anchors or walls to which they are attached and, therefore, must be firmly secured in order to support the loads for which they are intended.

### INSTALLATION:

Provide concealed anchor device or backing as specified or required in accordance with local building codes before wall is finished. Fasten concealed mounting flanges to anchor device or backing. Snap flange covers over each mounting flange to conceal mounting screws. Concealed anchor devices and mounting screws are not included with this towel bar and must be specified as an accessory.

### Important Notes:

- Mounting Kits** — Bobrick has a selection of mounting screws and fasteners available for different types of installations; **one Bobrick mounting kit is required for each flange.**

Mounting Kit No.	Description
252-30	Consists of (3) #14 x 2 1/2" (M6.3 x 64mm) type-304 stainless steel, Phillips round-head, sheet-metal screws.
2521-30	Consists of (3) 1/4"-20 x 3/2" (M6.3-1 x 89mm) type-304 stainless steel, Phillips round-head, machine screws with plated-steel toggle nuts.
2522-30	Consists of (3) 1/4"-20 x 2" (M6.3-1 x 51mm) type-304 stainless steel, Phillips round-head, machine screws with metal expansion shields.

- Grab Bar Fastener** — Bobrick has a grab bar fastening system that secures all Bobrick grab bar series; **one Bobrick fastener is required for each flange.**

WingIt™ Fastener No..	Description
251-4	Consists of (3) 10-32 x 5/16" round-head, Phillips 18/8 stainless steel screws. (1) WingIt grab bar fastener.

### SPECIFICATION:

Towel bar shall be type-304 stainless steel with satin finish. Towel bar shall have 18-gauge (1.2mm) wall thickness and 1" (25mm) outside diameter. Clearance between the towel bar and wall shall be 1-1/2" (38mm). Concealed mounting flanges shall be 1/8" (3mm) thick stainless steel plate, 2" x 3-1/8" (50 x 80mm), and equipped with two screw holes for attachment to wall. Flange covers shall be 22-gauge (0.8mm) stainless steel, 3-1/4" (85mm) diameter, and shall snap over mounting flanges to conceal mounting screws. Ends of towel bar shall pass through flanges and be welded to form one structural unit. Manufacturer's service and parts manual shall be provided to the building owner/manager upon request.

**Towel Bar shall be Model \_\_\_\_\_ (insert model number) of Bobrick Washroom Equipment, Inc., Clifton Park, New York; Jackson, Tennessee; Los Angeles, California; Bobrick Washroom Equipment Company, Scarborough, Ontario; Bobrick Washroom Equipment Pty. Ltd., Australia; and Bobrick Washroom Equipment Limited, United Kingdom.**