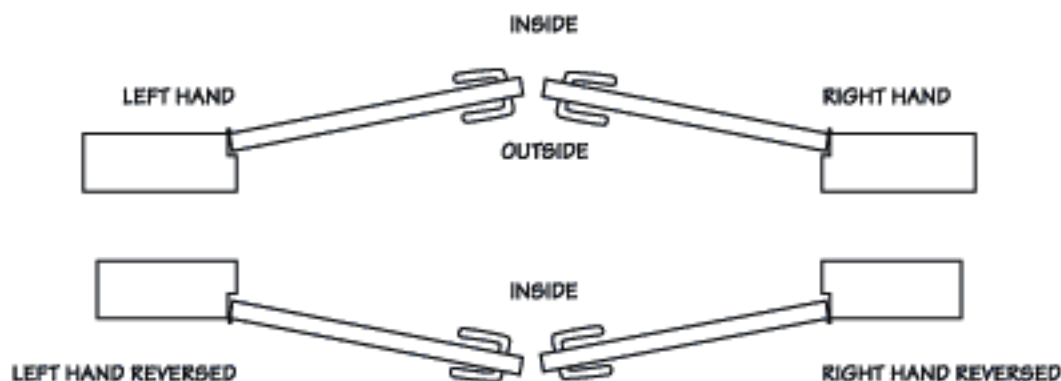




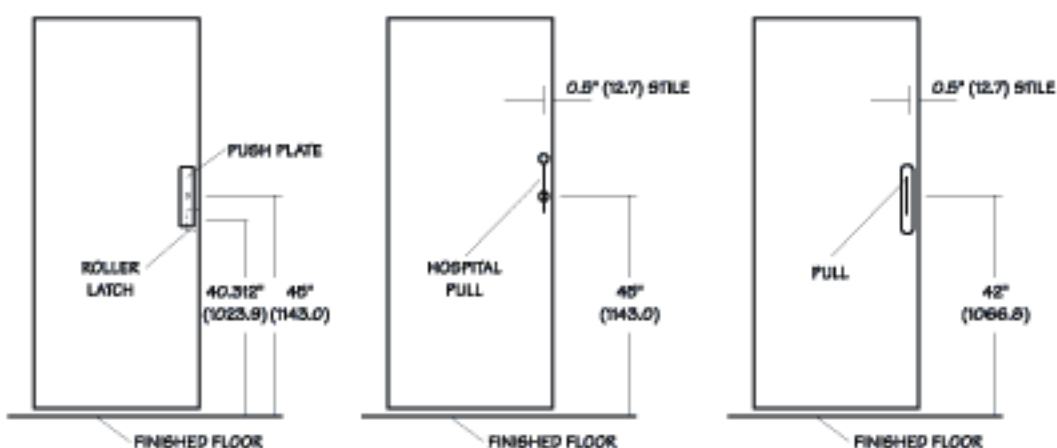
GENERAL INFORMATION / MOUNTING

4

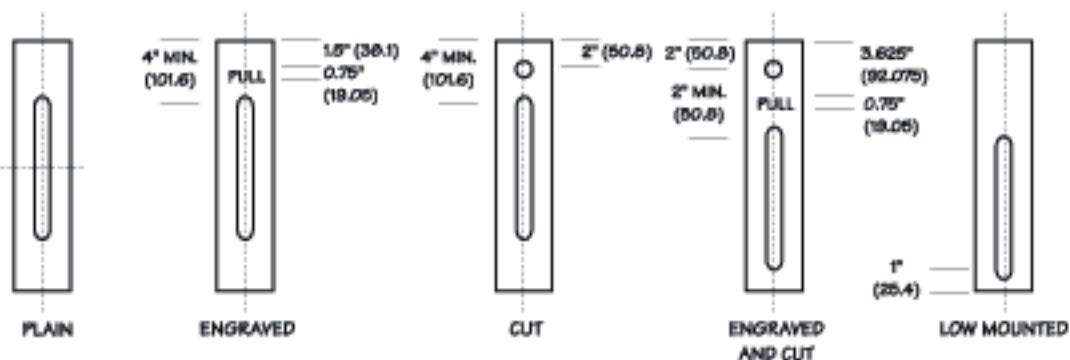


DOOR HANDS DETERMINED FROM OUTSIDE

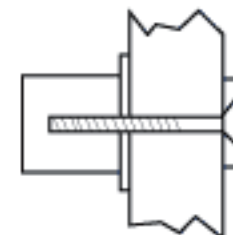
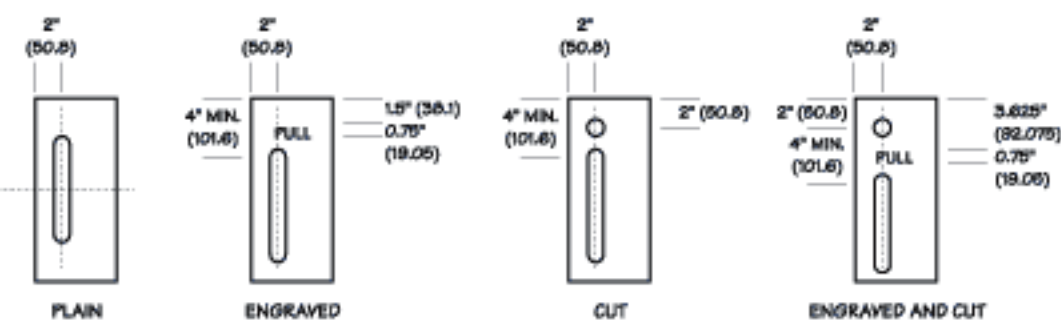
RECOMMENDED LOCATION ON DOOR



PULL POSITION ON PLATES 4" (101.6) OR LESS IN WIDTH

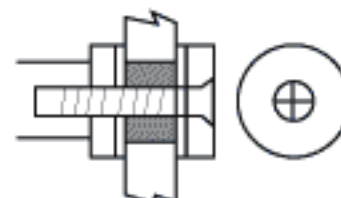


PULL POSITION ON PLATES WIDER THAN 4" (101.6)



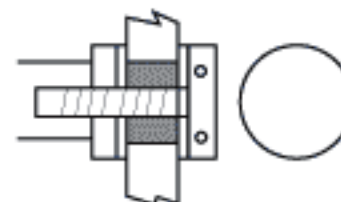
#2 MTG

THRU BOLT MOUNTING - MACHINE SCREWS THRU DOOR WITH GROMMET WASHER.



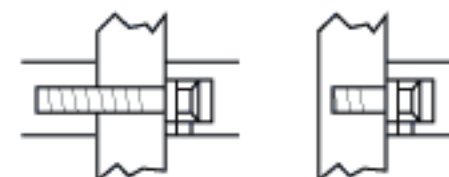
#4A MTG

GLASS DOOR WASHER SUPPLIED WITH VINYL PAD.



#4B MTG

SECURITY BOLT, VINYL PAD SUPPLIED FOR GLASS DOOR APPLICATIONS.



#5 MTG

CONCEALED MOUNTING FOR BACK TO BACK OR SINGLE UNITS. MACHINE SCREW STANDARD. WOOD SCREW FOR SINGLE MOUNTING ON WOOD DOORS AVAILABLE UPON REQUEST.