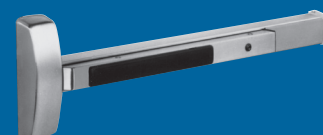


Simplicity, Strength, and Durability



80 Series Exit Device



80 Series Exit Device



8600 Series Concealed Vertical Rod Exit Device

8700 Series Surface Vertical Rod Exit Device

8800 Series Rim Exit Device

8600 Series Concealed Vertical Rod

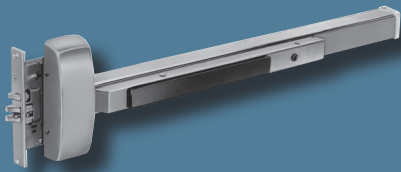
- Designed for standard width stile applications on metal or aluminum doors
- Concealed rods for security and aesthetics
- Single and double door applications
- Available less bottom rod
- ANSI/BHMS Grade 1
- UL Fire and Panic listed
- Also available in narrow stile (8400 Series)

8700 Series Surface Vertical Rod

- Two point latching (top & bottom with adjustability through center case)
- Single or double door applications
- ANSI/BHMA Grade 1
- UL Fire and Panic Listed

8800 Series Rim

- Designed for standard width stile applications on wood and metal doors
- Single point rim latching device
- Single and double door applications with mullions
- ANSI/BHMA Grade 1
- UL Fire and Panic listed
- Also available in narrow stile (8500 Series)



8900 Series Mortise Lock
Exit Device



Exit Device
Security Kit option



Beacon® option

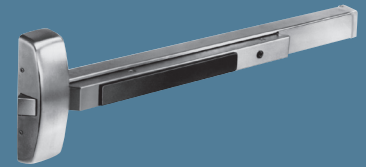
8900 Series Mortise Lock

- Designed for standard width stile applications on wood and metal doors
- Concealed single point guarded latching for additional security
- Available for single door applications or double door applications
- ANSI/BHMA Grade 1
- UL Fire and Panic listed
- Also available in narrow stile (8300 Series)

Popular options available:

- **Exit Device Security Kit** fills the gap between the exit device and the door lite that prevents intruders from wrapping chains/ropes around exit devices and locking people in.
- **Electric Latch Retraction** provides electrified retraction of the latchbolt for momentary or maintained periods.
- **ElectroGuard™ Delayed Egress** sounds a door alarm when an attempt is made to exit the door.
- **Beacon®** offers a combination of audible and visible alerts that are built into the exit device to guides occupants to the location of the exit.
- **SARGuide® Photoluminescent and Electroluminescent Exit Signage** increases the visibility of exit locations in dark or smoke filled passages.
- **Hurricane and Windstorm Resistance Certifications** meet building codes as specified by the Florida Building Code and the International Building code

The SARGENT 80 Series exit devices are ideal for environments that require strong and durable security solutions that will last the life of the building. Available in rim, mortise, surface vertical and concealed vertical rod configurations, these exit devices easily exceed ANSI/BHMA Grade 1 requirements for cycle and strength. With modular construction and few moving parts, the 80 Series devices are maintenance-free and provide unsurpassed security for any facility. Plus, options are available for unique applications including delayed egress, alarmed exit and electric latch retraction making these exit devices the go-to product in your building.



Features

- Modular construction, maintenance-free design
- Few moving parts
- Available in rim, mortise, surface vertical rod and concealed vertical rod
- Complete offering of electro-mechanical solutions
- Available with Microshield® antimicrobial coating
- Made from 61% post-consumer recycled content as per LEED MR credit 4
- 5 year warranty
- Available with Studio Collection decorative levers and 13 architectural finishes

Benefits

Strength & Reliability: Independently-verified cycle and strength testing proves the 80 Series will last the lifetime of the facility.

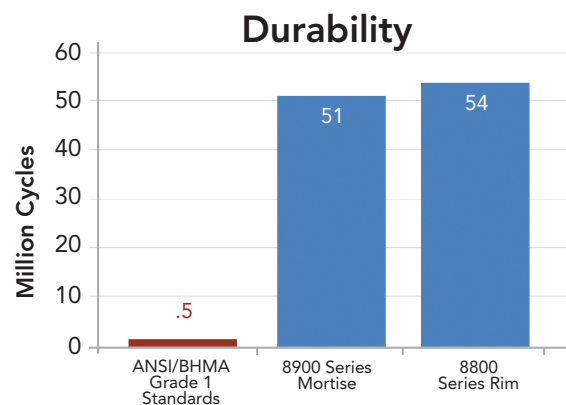
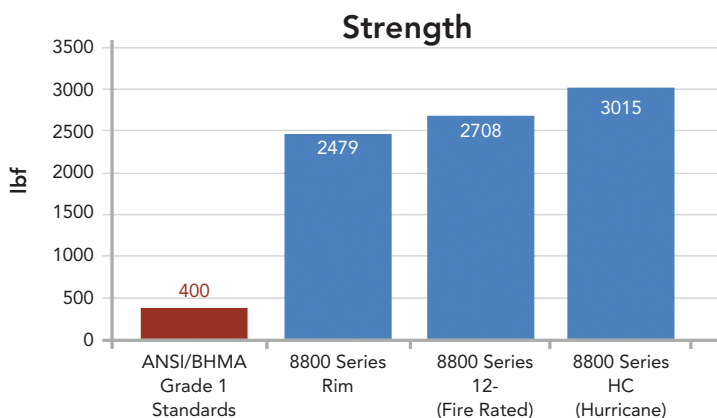
Security: Multiple security features provide additional resistance against vandalism and unauthorized entry.

Ease of Install and Maintenance: Modular components and robust design allow for quick and easy installation, and maintenance free operation.

Aesthetics: Attractive, minimalist design featuring full many levers and architectural finishes to blend with any decor.

Sustainable: Contributes to your sustainability efforts- less product replacements due to long life and high post-consumer recycled content.

Strength and Cycle Testing



Note: ANSI/BHMA standards are based on 3'0" x 7'0" doors. SARGENT devices were tested on 4'0" x 10'0" doors. All results were witnessed and verified by an independent, third party test lab.

For information call 800-727-5477 or visit us online at www.sargentlock.com

Copyright © 2013 Sargent Manufacturing Company, an ASSA ABLOY Group company. All rights reserved. Reproduction in whole or in part without the express written permission of Sargent Manufacturing Company is prohibited.