

# EVOLUTION SERIES

## VENEER JAMB – NON-RATED

# J1500C

### SPLIT JAMB (1 1/8")

- ① 1/32" wood veneer faces
- ② 1 1/8" (28.5 mm) plywood veneer
- ③ 1/32" hardwood backing
- ④ 1/32" wood veneer faces
- ⑤ Plywood veneer door stop
- ⑥ Door
- ⑦ Corner rabbet type

#### SPECIFICATIONS

**MINIMUM WALL THICKNESS:** 4 5/8" (117 mm). ±1/4" adjustment.

**ASSEMBLY:** Please refer to installation instructions

#### MAXIMUM OPENING

| Single: 48" (1,219 mm) x 120" (3,048 mm)

| Double: 96" (2,438 mm) x 120" (3,048 mm)

**CASING:** According to your needs

**SHIPPING:** Unassembled (Knock Down)

**WRAPPING:** Each frame will be shipped in a cardboard box, with 1/32" (1 mm) foam and bundle wrapped.

**Installation instructions and peel-and-stick door bumpers are included (mandatory)**

**WARRANTY: 3 years**

#### OPTIONS

| Other size configurations upon request

| \* M.R. 5.1/5.2 according to project localisation. Contact us.

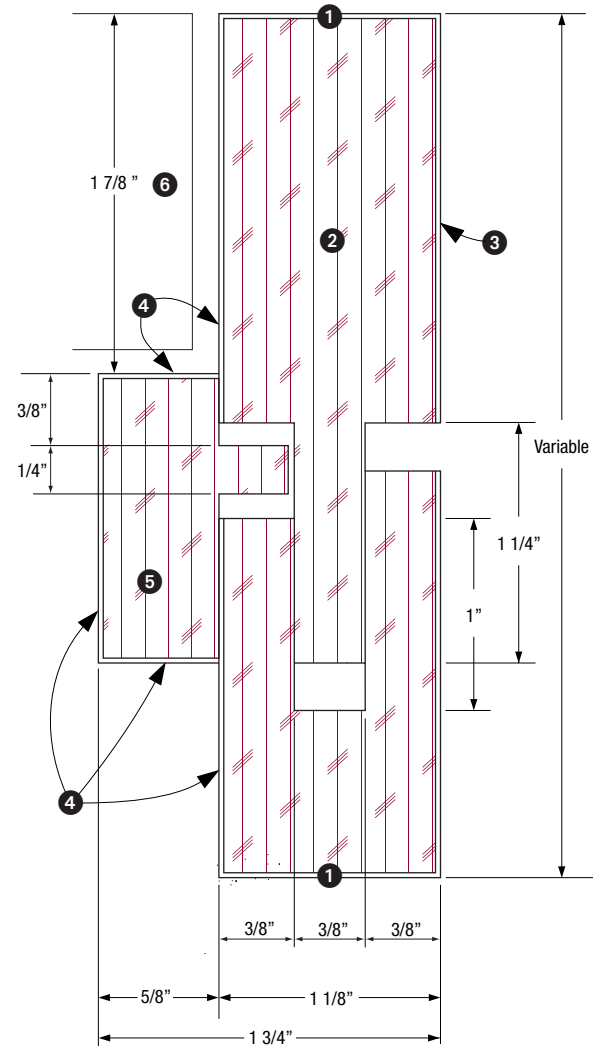
| \*\*\* To get IEQ 4.4, specify NAUF jamb.

| Mounting brackets available

| Pre-machining

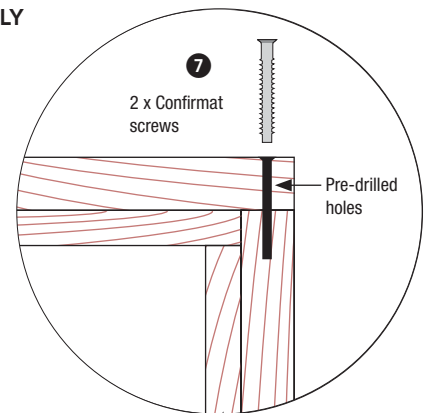
| Pre-finishing

| ○ Subject to evaluation. Contact us.



#### JAMB ASSEMBLY

Head and jamb



LEED Eligible Credits	MR					IEQ		ID1	PR 2
	3	4	5	6	7	3.2	4.4	mode 2	
		✓	*			○	***	○	○

