

EVOLUTION SERIES

VENEER JAMB – NON-RATED

J1200A

APPLIED T-STOP JAMB (3/4")

- ① 1/32" wood veneer faces
- ② 3/4" (19 mm) wood veneer
- ③ Hardwood backing
- ④ 1/32" wood veneer faces
- ⑤ Wood veneer door stop
- ⑥ Door
- ⑦ Corner rabbet type

SPECIFICATIONS

MINIMUM WALL THICKNESS: 3 5/8" (92 mm)

ASSEMBLY: Please refer to installation instructions

MAXIMUM OPENING

| Single: 48" (1,219 mm) x 120" (3,048 mm)

| Double: 96" (2,438 mm) x 120" (3,048 mm)

CASING: According to your needs

SHIPPING: Unassembled (Knock Down)

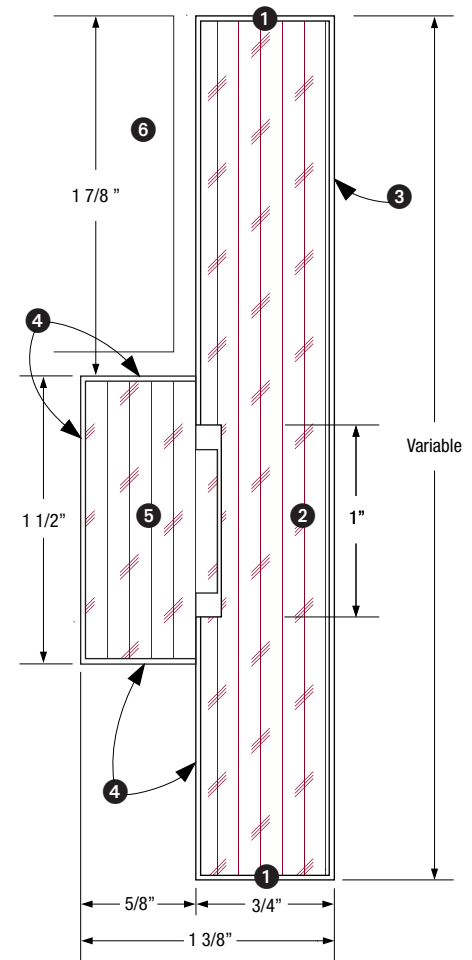
WRAPPING: Each frame will be shipped in a cardboard box, with 1/32" (1 mm) foam and bundle wrapped.

Installation instructions and peel-and-stick door bumpers are included (mandatory)

WARRANTY: 3 years

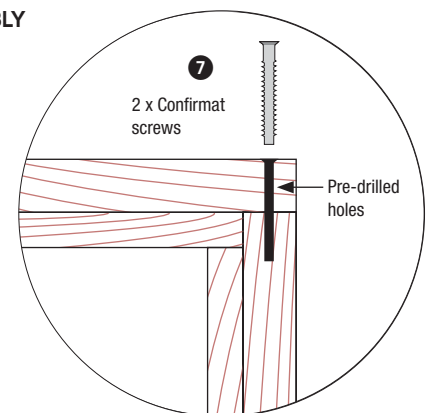
OPTIONS

- | Other configurations upon request
- | * M.R. 5.1/5.2 according to project localisation. Contact us.
- | *** To get IEQ 4.4, specify NAUF jamb.
- | Mounting brackets available
- | Pre-machining
- | Pre-finishing
- | ○ Subject to evaluation. Contact us.



JAMB ASSEMBLY

Head and jamb



LEED Eligible Credits	MR					IEQ		ID1	PR 2
	3	4	5	6	7	3.2	4.4	mode 2	
		✓	*			○	***	○	○

