



# PC520-MO/ME/VE (5 PLY)

## PARTICLE CORE FOR INTENSIVE USE

**1 STILES:** Hardwood or structural composite lumber (SCL), including a **7/16" (11 mm)** piece of hardwood, for a total width of **1 3/16" (30 mm)**:

**MO:** Manufacturer's choice.

**ME:** Matched with faces.

**VE:** SCL covered with 1/32" (0.7938 mm) of wood veneer, matched with faces.

**Bonded to core**

**2 TOP AND BOTTOM RAILS:** **1 3/16" (30 mm)** in wood or SCL, (LVL FSC) or laminated strand lumber (LSL), manufacturer's choice. **Bonded to core.**

**3 CORE:** Solid particleboard. Density of 28-32 lbs per cubic foot. Complies with CSA-0188 and ANSI A208-1 standards (LD-1/LD-2). Available NAUF/FSC (LD-2).

**4 FACES:** Wood veneer (choice of face veneers; 2 ply plywood), hardboard panel or plastic laminate glued to composite crossband. Available NAUF/FSC.

**LOCK BLOCK:** Integrated.

**GLUE:** Type 1 PVA Cross-link (NAUF).

**INTERIOR USE**

**WARRANTY: LIFETIME**

### OPTIONS

| For 3 ply plywood veneer, specify PC7-MO/ME/VE (7 ply door).

| \* To get M.R. 6.0, specify agrifibre core (PC5-MO/ME/VE-AF).

| \*\* To get M.R. 7.0: **Option 1:** specify particleboard core NAUF/FSC (PC5-MO/ME/VE NAUF/FSC) and FSC faces to optimize. **Option 2:** specify agrifibre core (PC5-MO/ME/VE-AF) and FSC faces, only when M.R. 6.0 is also required.

| \*\*\* To get I.E.Q. 4.4, specify particleboard core NAUF/FSC (PC5-MO/ME/VE NAUF/FSC) or agrifibre core (PC5-MO/ME/VE-AF) and NAUF or NAUF/FSC faces.

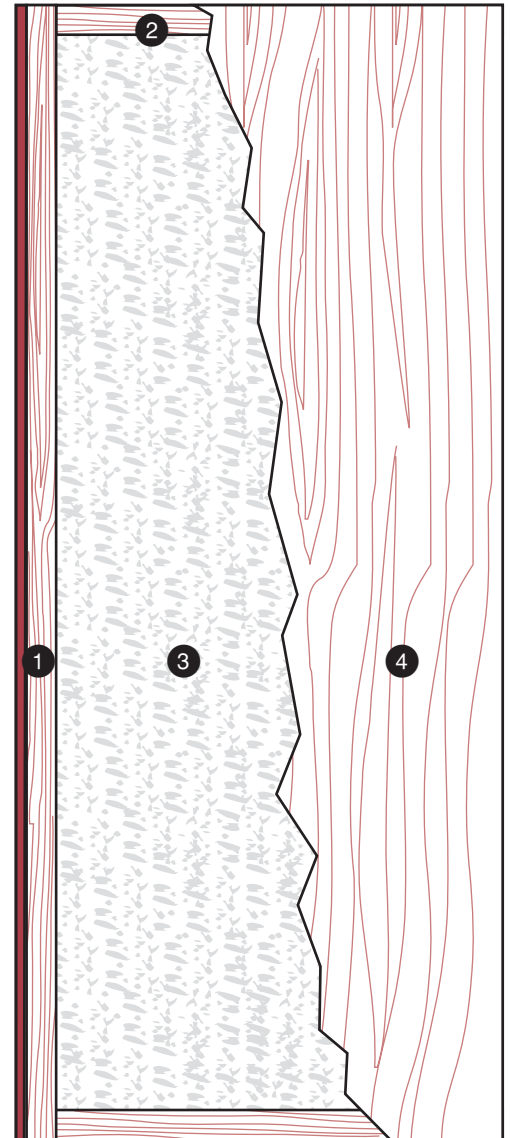
### NOTE

| Dimensions are nominal before trimming.

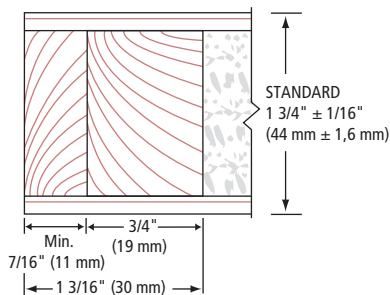


<b>LEED</b> ELIGIBLE CREDITS	<b>M.R.</b>		<b>I.E.Q.</b>				
	4.1	4.2	5.1	5.2	6.0	7.0	4.4 (NAUF)
	✓	✓	✓	✓	*	**	***

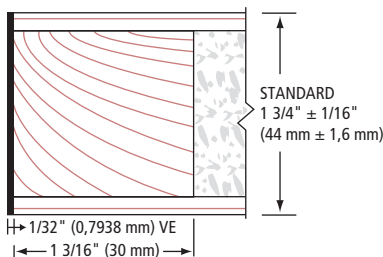
Standards meet or exceed:  
A.W.S. section 9, October 1, 2009;  
W.D.M.A. 1.S.1A-04  
and CSA 0132.2 90



### 1 STILES MO/ME



### 1 STILES VE



### 2 RAILS

