

8600-MO/ME/VE (5 PLY)

PARTICLE CORE, FOR INTENSIVE USE

1 STILES: 1/8" (3 mm) hardwood or thick veneer, longitudinally laminated by hot pressing with type 1 structural glue, as per ASTM-D5456-93 (LVL FSC) or laminated strand lumber (LSL), might include a **7/8" (22 mm)** piece of hardwood, for a total width of **1 3/16" (30 mm)**:

MO: Manufacturer's choice.

ME: Matched with faces.

VE: Covered with 1/32" (0.7938 mm) wood veneer, matched with faces.

2 TOP AND BOTTOM RAILS: 1 3/16" (30 mm) in wood or SCL, manufacturer's choice (LVL FSC) or (LSL).

3 CORE: Solid particleboard. Density of 28-32 lbs per cubic foot. Complies with CSA-0188 and ANSI A208-1 standards (LD-1/LD-2). Available NAUF/FSC (LD-2).

4 FACES: Wood veneer (choice of face veneers; 2 ply plywood), hardboard panel or plastic laminate glued to composite crossband. Available NAUF/FSC.

LOCK BLOCK: Integrated.

GLUE: Type 1 PVA Cross-link (NAUF).

INTERIOR USE

REFERENCE FPC-5/FPC-7 (AWI/AWMAC).

WARRANTY: LIFETIME

OPTIONS

| 20 minute fire rating, specify 8620-MO/ME/VE or 8620-MO/ME/VE NAUF/FSC.

| Wood veneer glued to plywood veneer (3 ply plywood) (7 ply door).

| * To get M.R. 6.0, specify agrifibre core (8620-MO/ME/VE-AF).

| ** To get M.R. 7.0: **Option 1:** specify particleboard core NAUF/FSC (8600-MO/ME/VE NAUF/FSC) and FSC faces to optimize. **Option 2:** specify agrifibre core (8600-MO/ME/VE-AF) and FSC faces, only when M.R. 6.0 is required.

| *** To get I.E.Q. 4.4, specify particleboard core NAUF/FSC (8600-MO/ME/VE NAUF/FSC) or agrifibre core (8600-MO/ME/VE-AF) and NAUF or NAUF/FSC faces.

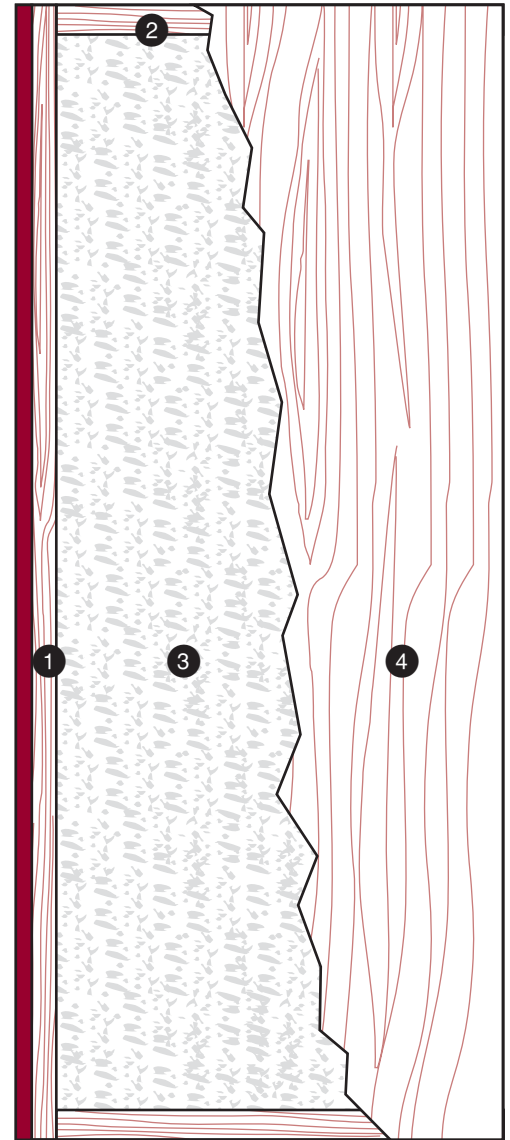
NOTE

| Dimensions are nominal before trimming.

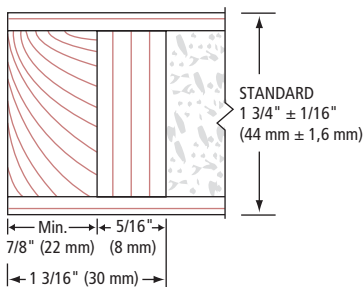


Standards meet or exceed:
A.W.S. section 9, October 1, 2009;
W.D.M.A. 1.S.1A-04
and CSA 0132.2 90

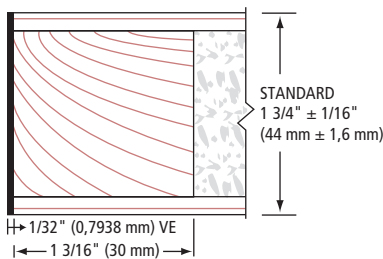
LEED ELIGIBLE CREDITS	M.R.		I.E.Q.	
	4.1	4.2	5.1	5.2
	✓	✓	✳	✳✳
			4.4 (NAUF)	✳✳✳



1 STILES MO/ME



1 STILES VE



2 RAILS

