



5045/60/90-MO/VE NEUTRAL PRESSURE (5 PLY)

45-60-90 MINUTE FIRE-RESISTANT DOOR, MINERAL CORE FOR INTENSIVE USE

1 STILES: Special construction compliant with W/H label requirements. High-density mineral and/or untreated hardwood (minimum of 3/4"/19 mm):

MO: Manufacturer's choice.

VE: Covered with 1/32" (0.7938 mm) of wood veneer, matched with faces.

Bonded to core

2 TOP AND BOTTOM RAILS: Special construction compliant with W/H label requirements. Mineral and/or untreated hardwood, manufacturer's choice (minimum of **1 3/8" (3 mm)**).

Bonded to core

3 CORE: Non-combustible mineral. **Neutral FSC (NAUF)**.

4 FACES: Wood veneer (choice of face veneers; 2 ply plywood), hardboard panel or plastic laminate glued to composite crossband. Available NAUF/FSC.

GLUE: Type 1 PVA Cross-link (NAUF).

MAXIMUM DIMENSIONS: 4' x 10' (single), 8' x 9' (double).

NOTE: Max. 1/2" (13 mm) cut allowed at bottom of door upon installation (see NFPA 80).

INTERIOR USE

WARRANTY: LIFETIME

For technical information, please consult our "5045/60/90 Technical Specification" sheet.

OPTIONS

Positive pressure available (PP) or (5045/60/90-MO/VE (PP)).

Hardware reinforcements.

Wood veneer glued to plywood veneer (3 ply plywood) (7 ply door).

* M.R. 5.1/5.2 according to project localisation. Contact us.

** To get M.R. 7.0, specify FSC faces.

*** To get I.E.Q. 4.4, specify NAUF or NAUF/FSC faces.

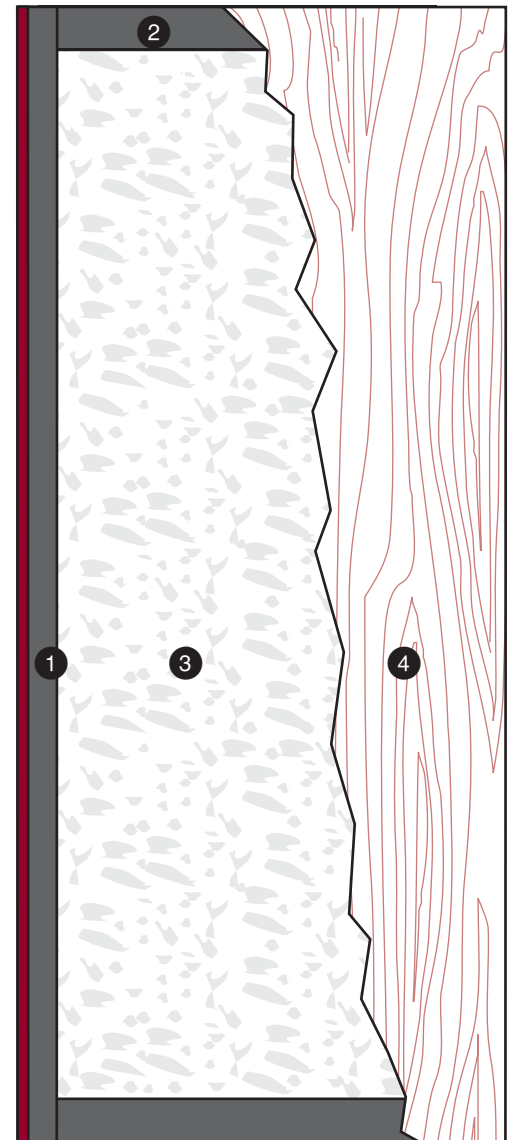
WARNING

Pre-machining must be done in factory or by an authorized distributor in order to maintain our warranty and comply with W/H requirements (see NFPA 80).

Certain applications may require reinforcement. Pilot holes required.

NOTE

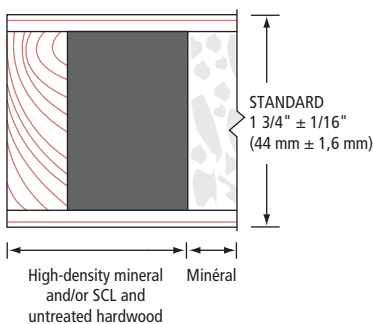
Dimensions are nominal before trimming.



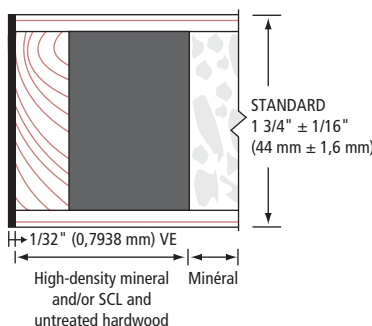
LEED ELIGIBLE CREDITS	4.1		4.2		M.R.		I.E.Q.	
			5.1	5.2	6.0	7.0	4.4 (NAUF)	
			*	*		**	***	

Standards meet or exceed:
A.W.S. section 9, October 1, 2009;
W.D.M.A. 1.S.1A-04
and CSA 0132.2 90

1 STILES MO



1 STILES VE



2 RAILS

