

**PENNER**

**DOORS AND  
HARDWARE**

**DISCOVER PENNER**

For 35 years, Penner Doors & Hardware has provided expertise in the specification, fabrication, and distribution of residential, commercial and architectural door and hardware systems - from British Columbia to Western Ontario. Our team is available to provide complete solutions to the challenges of today's door and hardware industry.

## OUR PARTNERS

- General Contractors
- Architects
- Design Builders
- Developers
- Property Management Companies
- Facility Managers
- Institutions
- Custom Home Builders
- Modular Builders
- Security Access Control - Locksmiths



## TABLE OF CONTENTS

### 4-21 PROJECTS

Our experienced team recommends products and solutions while meeting budget requirements.

### 22-49 PRODUCTS

Hollow Metal Doors & Frames  
Wood Doors  
Folding Doors  
Traffic Doors  
Aluminum Entrances  
Architectural Hardware  
Washroom Partitions & Accessories  
Access Control Systems  
Counter Shutters  
Automatic Operators  
Lockers  
Construction Specialties

### 50-51 PENNER EXPRESS

When quick service and delivery are required, shop our online portal. Use our quick courier and delivery service to keep you on the job.

### 52-53 SERVICES

Penner Doors & Hardware offers estimating and project management for door, hardware and building specialty requirements of all sizes of commercial, industrial and institutional construction projects. We are fully bonded and COR certified.

We provide on site solutions, specification writing, design consultation, trouble shooting, custom metal fabrication and installation.

Our service technicians work closely with property management companies for on site installation and remedial work.

### 54-55 AFFILIATIONS & CONTACT



## PENNER | CORPORATE HEAD OFFICE

LOCATION: SASKATOON, SK

BUILDER: QUOREX CONSTRUCTION

Penner's Saskatoon facility is a living showroom, featuring a range of architectural door and hardware options across a multitude of openings.

Connected to the offices is over 50,000ft<sup>2</sup> of state-of-the-art fabrication and warehousing.





## THE WELLNESS INSTITUTE

LOCATION: WINNIPEG, MB

BUILDER: UMA ENGINEERING

The Wellness Institute Clinic is a rehabilitation and preventive health clinic that houses the clinical component of lifestyle medicine services.

**SUPPLIED:** Steel doors and frames, wood doors, and finish hardware.



## SASKATCHEWAN PENITENTIARY

LOCATION: PRINCE ALBERT, SK

Saskatchewan Penitentiary is a medium security facility with maximum security areas and is located west of Prince Albert, Saskatchewan.

**SUPPLIED:** Steel doors and frames, hardware, detention doors, and specialties.





## STONEY CNG BUS STORAGE AND TRANSIT FACILITY

LOCATION: CALGARY, AB

BUILDER: PCL CONSTRUCTION

Calgary Transit's fleet of compressed-natural-gas (CNG) buses have a new, nearly 500,000-square-foot storage and maintenance garage to call home. Staff can keep the fleet in top shape with 36 maintenance bays, two detail cleaning bays and on-site compressed-natural-gas fueling infrastructure. The facility also supports diesel bus operations to accommodate the transition from a diesel to CNG fleet.

**SUPPLIED:** Steel doors, frames and finish hardware.



## SCENIC GRANDE BY REVERA ASSISTED LIVING

LOCATION: CALGARY, AB

BUILDER: CHANDOS CONSTRUCTION

The Scenic Grande Retirement Residence offers state-of-the-art accommodations and luxury amenities.

**SUPPLIED:** Metal and wood doors and frames, hardware, toilet partitions, washroom accessories, lockers, flagpoles, and rolling shutters, including installation.





## HYDE PARK PERSONAL CARE HOME

LOCATION: SASKATOON, SK

BUILDER: QUOREX CONSTRUCTION

Hyde Park Personal Care Home brings together award-winning facility design and compassionate care providers to offer a safe and stimulating environment for your family member to age in place comfortably.

**SUPPLIED:** Fire labelled interior suite doors and frames, interior wood doors, hardware, and mouldings.



## 62M SPACESHIP CONDO

LOCATION: WINNIPEG, MB

BUILDER: LANGREEN PROJECTS

Consisting of 40 prefab wedge-shaped units, a uniquely circular building has become an unlikely icon on the Winnipeg skyline.

**SUPPLIED:** Steel and wood doors, frames, fiberglass doors, composite jambs, and finish hardware.





## HOSPICE AT GLENGARDA

LOCATION: SASKATOON, SK

BUILDER: QUOREX CONSTRUCTION

The Hospice at Glengarda is Saskatchewan's first free-standing residential Hospice. It has 15 bright and beautiful individual rooms, providing 24-hour care for people requiring full-time, hands-on care in light of advancing, end stage illness.

**SUPPLIED:** Sliding doors in patient rooms, steel and wood doors, frames, and hardware.





## SECURITY BUILDING SUPPLIES

LOCATION: SASKATOON, SK

BUILDER: CON-TECH GENERAL CONTRACTORS

Veterans in the industry since 1968, supplying lumber and building materials to home builders, renovators, and general contractors. A 32,000 square foot building supplies warehouse and lumber yard with heated drive thru, coffee bar, boardroom and a large two storey show room.

**SUPPLIED:** Architectural wood and steel doors, frames, hardware, washroom accessories, floor grilles, and lockers.



## SPYHILL ARREST PROCESSING FACILITY

LOCATION: CALGARY, AB

BUILDER: CANA CONSTRUCTION

The Spyhill Services Centre is a new administrative and processing/holding facility for the City of Calgary and the Calgary Police Service (CPS), located in the northwest of Calgary. The multi-purpose facility features administrative office space, meeting and interview rooms, a fitness centre, full shower area, quiet rooms, BBQ patio area, prayer rooms, as well as 50 short-term holding cells and related processing facilities.

**SUPPLIED:** Metal and acoustic doors, frames, hardware, toilet partitions, washroom accessories, flagpoles, entrance mats, and visual boards.





## MISTAWASIS NÊHIYAWAK HIGH SCHOOL

LOCATION: MISTAWASIS FIRST NATION, SK

BUILDER: 3TWENTY MODULAR

Mistawasis Nêhiyawak High School was designed to meet the building and technological standards of new high schools in urban centres. The school has four classrooms and two additional flexible teaching spaces that are used primarily for STEM curriculum. The school is also equipped with a full commercial kitchen and cafeteria space for students and community members.

**SUPPLIED:** Steel and wood doors, frames, hardware, and washroom accessories.





## NIVERVILLE HIGH SCHOOL

LOCATION: NIVERVILLE, MB

BUILDER: RED LAKE CONSTRUCTION CO LTD.

Niverville High School is a new 70,000 sq.ft. facility designed to accommodate a student high school and a 74 unit childcare facility. The high school also includes a link providing access to a proposed town multiplex facility creating an educational, sporting, and cultural campus for the community.

**SUPPLIED:** Steel and wood doors, frames, finish hardware, and specialties.



## ROQUETTE PEA PROCESSING PLANT

LOCATION: PORTAGE LA PRAIRIE, MB

BUILDER: PRETIUM PROJECTS

The Roquette Pea Processing Plant, the largest pea protein facility in the world to date, aims to better meet the growing demand for pea protein around the world.

**SUPPLIED:** Steel doors, frames, and finish hardware.





## MANITOBA HYDRO BIPOLE III

LOCATION: KEEWATINOHK AND RIEL CONVERTER, MB

BUILDER: MORTENSON CONSTRUCTION

Bipole III is a high-voltage direct current transmission line that delivers renewable energy to southern Manitoba, helping to reduce reliance on fossil fuels. The converter stations at both the Riel and Keewatinohk station sites were technical projects that required site-specific demands to be met for quality, security, and sound control. Providing welded mesh cages and large sound control openings required planning for manpower and equipment to install these doors with attention to quality and safety.





## FAIRMONT BANFF SPRINGS HOTEL - ALBERTA & NEW BRUNSWICK ROOMS

LOCATION: BANFF, AB

BUILDER: FAIRMONT HOTELS

Located in the Main Hotel Building, combined these two rooms account for 8520 square feet of event space complete with stunning foyer space. With the dividing wall in place, the Alberta Room is 4067 square feet and the New Brunswick Room is 3098 with a semi-private extension which accounts for an additional 1355 square feet.

**SUPPLIED:** Operable walls.



## WANUSKEWIN HERITAGE PARK

LOCATION: SASKATOON, SK

BUILDER: QUOREX CONSTRUCTION

Wanuskewin Heritage Park is a National Indigenous Heritage Site featuring a newly renovated expansion of their Interpretive Center, art gallery spaces and meeting rooms, as well as a refreshed restaurant, new playground and trail connections.

**SUPPLIED:** Architectural 2-1/4" oversized fir plank doors, steel doors, frames, and custom hardware.





## DELTA HOTEL

LOCATION: THUNDER BAY, ON

BUILDER: BNL CONTRACTING

Proudly standing on the northwestern shore of Lake Superior, the Delta Marriott in Thunder Bay is one of the only true waterfront hotels in town.

**SUPPLIED:** Wood doors and finish hardware.





## WESTJET WIDE BODY HANGAR

LOCATION: CALGARY, AB

BUILDER: CANA CONSTRUCTION

The 125,500 ft<sup>2</sup> WestJet Wide Body Hangar expands WestJet's operations by facilitating wide-body airplane operations, maintenance and storage. The hangar accommodates one 787-9 Dreamliner aircraft or up to four 737 aircraft.

**SUPPLIED:** Steel doors, frames, and hardware.



HOLLOW METAL  
DOORS & FRAMES

HARDWARE





LOCKERS

WOOD DOORS  
& FRAMES



FLOOR MOUNTED

FLOOR TO CEILING

CEILING MOUNTED

HEADRAIL BRACED



# hadrian®

## TOILET PARTITIONS AND LOCKERS

Hadrian is a worldwide supplier of quality toilet partition and locker products. Hadrian was the first manufacturer to powder coat toilet partitions and has continued to embrace new technologies and materials in order to offer architects, designers and end-users more flexibility in design.

Hadrian's wide range of toilet partition products includes powder coated metal, stainless steel, embossed stainless steel, and solid plastic. Lockers are available in Emperor (corridor), Gladiator (athletic), and replacement front styles.





## WASHROOM ACCESSORIES



Bobrick is recognized as an industry leader in well-designed, value-oriented washroom accessories



Architects and engineers turn to Bradley for the industry's most innovative products specified for commercial washrooms and industrial safety applications



Frost has earned a reputation for manufacturing quality washroom products that offer both durability and value.



From hand dryers and hair dryers, to vacuums, purifying fans and lighting, Dyson technology is engineered with your employees and guests in mind.



V BLADE HAND DRYER



DB HAND DRYER



AIRBLADE™ WASH+DRY HAND DRYER



### WHITE BOARDS AND TACK BOARDS

The Canadian Blackboard Company (CBBC) is your manufacturer of standard and custom boards to efficiently communicate your ideas.

CBBC is much more than just blackboards. It is, of course, white boards and display boards, but also glass boards, partition walls, projection screens, glass display cases and much more.

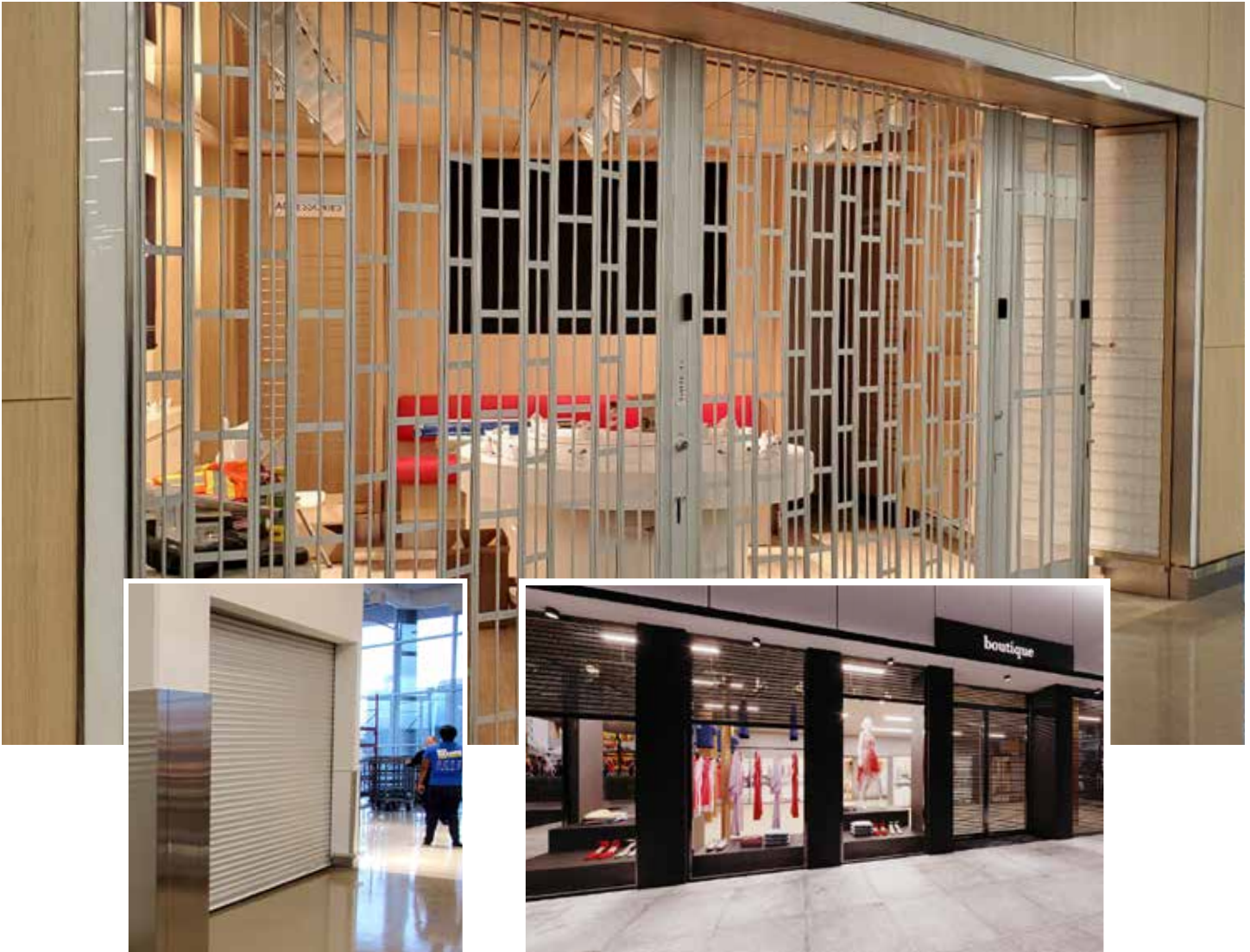


Our white boards are equipped with a magnetic surface and are easily dry erasable. Standard and custom dimensions available

Cork boards are easy to use and maintain and are available in both natural cork or a variety of colours.







## ROLLING SHUTTERS & SLIDING GRILLES



Amstel Manufacturing has been a Canadian leader in the door industry since the late 1960's. Since its inception, Amstel has been considered one of the premier companies in custom building closure systems

CornellCookson is the leader in custom built Overhead Rolling doors. Whether your needs include Rolling Service Doors, Security Doors, Fire Doors, Insulated Garage Doors or Security Grilles, they have the right fit for you.

Pentagon has over 20 years of experience with security shutters and closure systems and are a leading manufacturer of security shutters and retractable screens with a large dealer network.



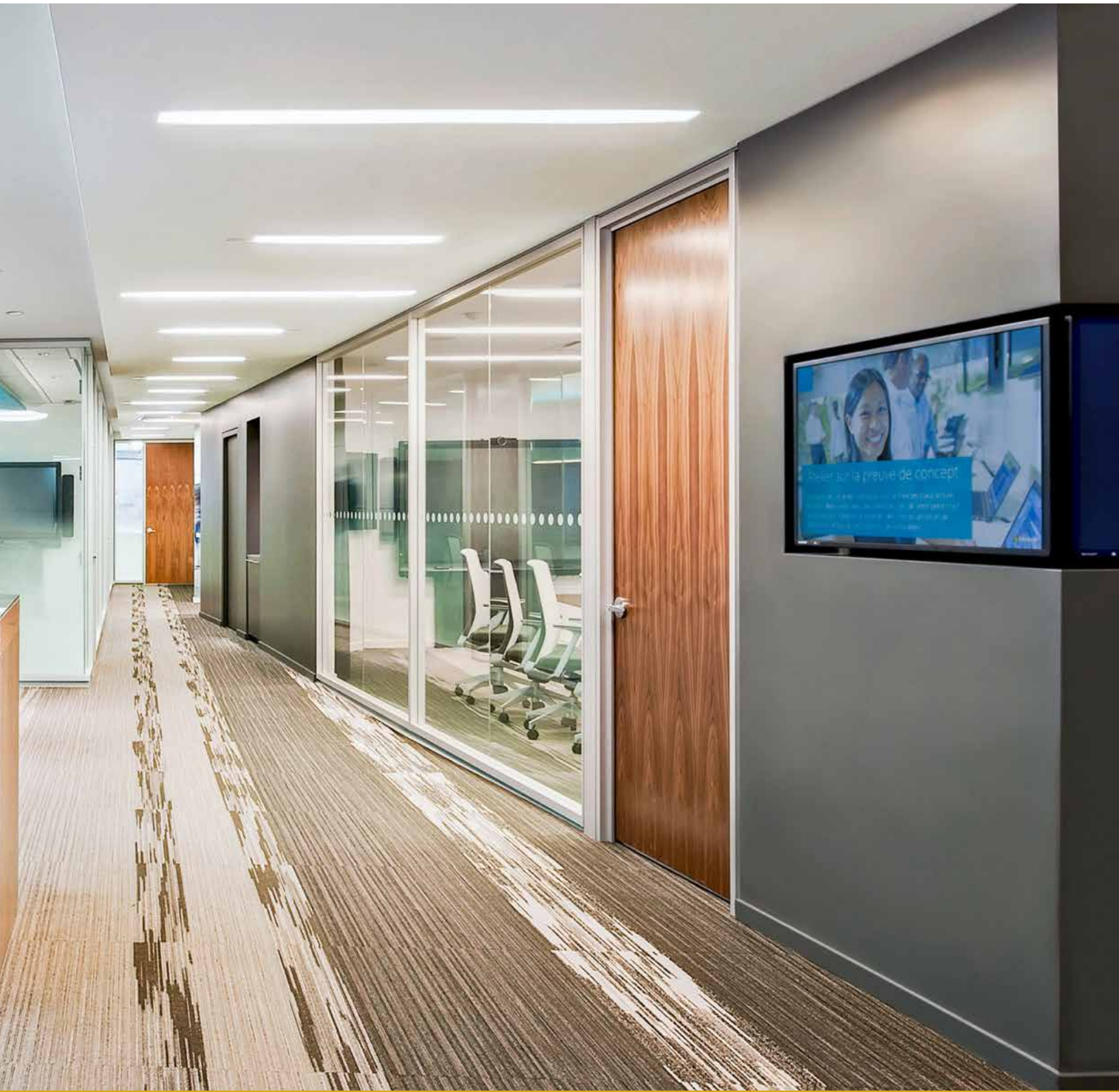
**MASONITE**  
ARCHITECTURAL

**DAYBAR**

HOSPITALITY

HEALTHCARE





EDUCATION

OFFICE



For over a century, Allegion has kept people safe and secure with category-leading products. From inventing the “panic release bar” exit device in 1908 to pioneering the first ever electric-controlled lock, their brands have been innovators for almost as long as people have locked doors.



With over 150 years of experience in everything to do with access and security, Dormakaba continues to innovate and deliver quality products and solutions.





# ASSA ABLOY



Assa Abloy offers a complete range of access solutions, making people feel safe and secure in simple and convenient ways. From reliable home security to cutting-edge biometric technology for businesses, governments, airports, hospitals, schools, and more.

Standard Metal Hardware is a manufacturer of commercial and architectural door hardware products and solutions. Since 1989, they have worked closely with architects and designers to create intricate and visually-appealing custom architectural door hardware.



## **ROCKWOOD**

### **ASSA ABLOY**

#### **ROCKWOOD HANDS-FREE DOOR PULLS**

Rockwood hands-free door pulls are an easy, cost-effective option for entrances, corridors, and restrooms.



**AP1140 Arm Pull**

**AP1007 Arm Pull  
with Plate**





### NDE AND LE WIRELESS LOCKS

Schlage® NDE and LE are designed to deliver increased security and efficiency with electronic credentials. Affordable and easy to install. NDE and LE locks are ideal for a wide range of applications including perimeter doors, suite entrances, office doors, and sensitive spaces.





**Construction Specialties®**

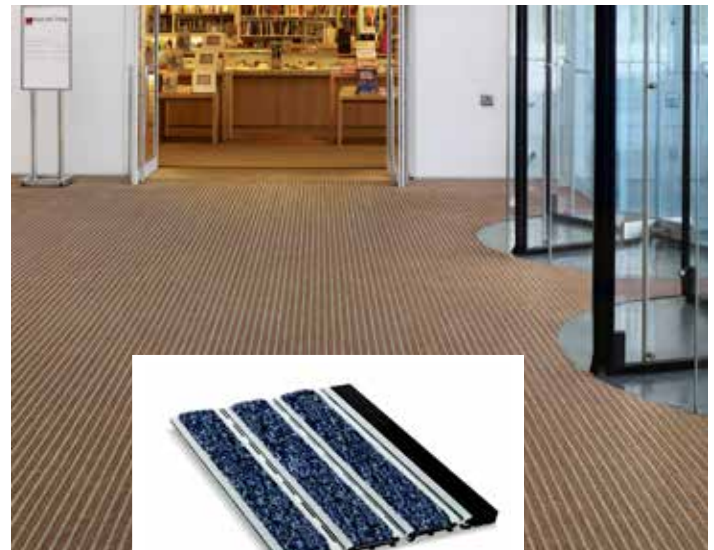
#### FLOOR MATS & GRILLES

CS has been innovating entrance flooring for over 45 years, providing the largest portfolio of beautiful options to protect your entrance which include mat systems, grid systems, modular tile systems, specialty flooring, anti-fatigue flooring, and architectural accents. Explore what solutions are the right fit for your project, to reduce maintenance costs while keeping your building occupants safe.



#### PediTread

Smooth rolling surface, solid feel underfoot with the industry's strongest grid handles.



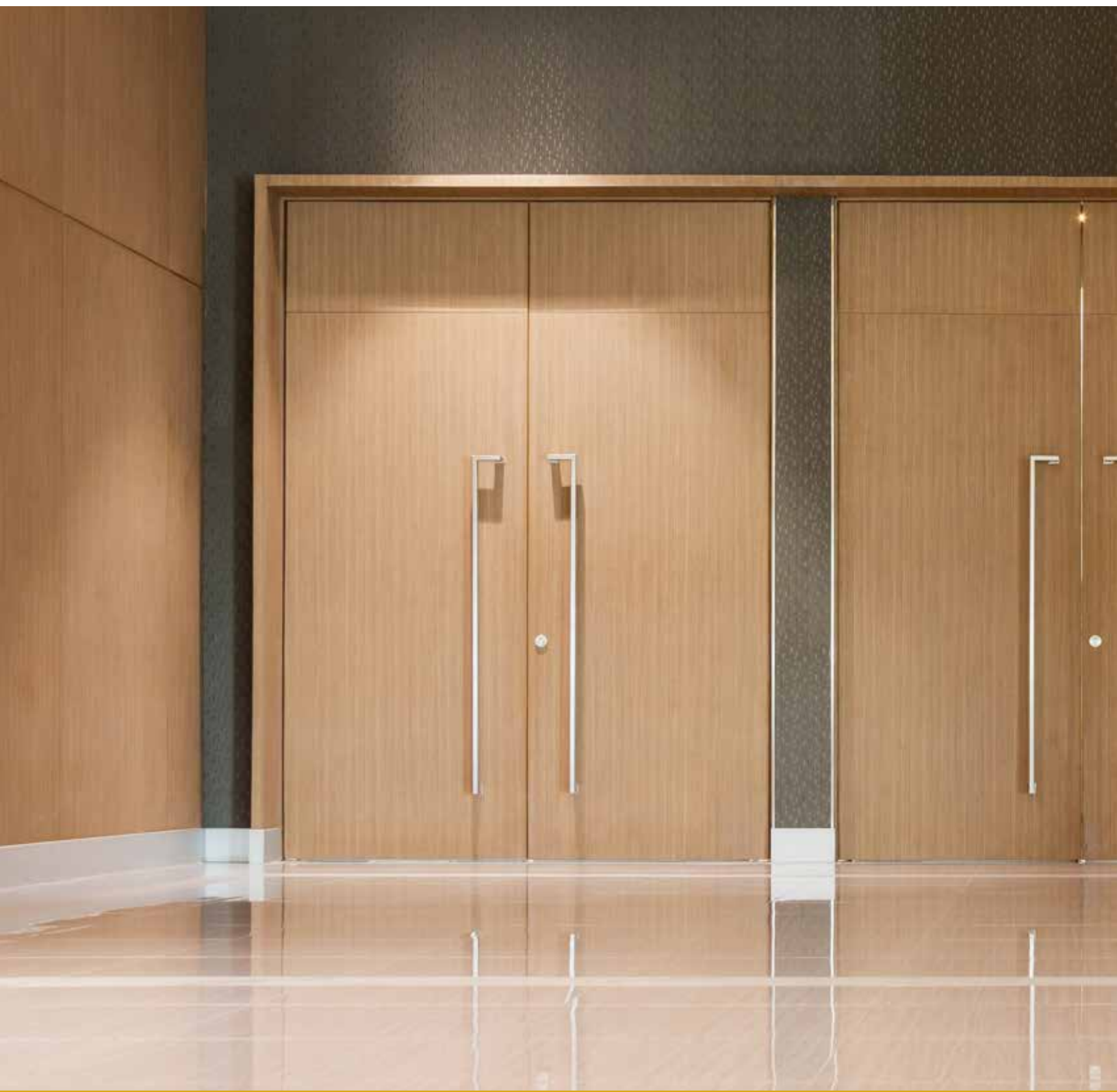
#### PediMat

Strong, lightweight rails and aluminum hinge connectors offer maximum performance in high traffic areas.



**CORFLEX****OPERABLE WALLS**

Complete solutions in space optimization. Corflex offers exclusive architectural solutions that optimize the harmonious management of space both indoors and outdoors. Available in a variety of colors and formats, these partitions add a presence to your decor, while offering the perfect privacy to your activities.



## ARCHITECTURAL WOOD DOORS



## DESIGNER HARDWARE



## ENTRE//MATIC

### DOOR OPERATORS

Durable & quiet automatic swing door operators transform virtually any interior door from manual to modern, touchpoint to touchless.



### DITEC HA7 SLIM LOW ENERGY OPERATOR



#### ● SETUP ASSIST

Setup is a breeze with a step-by-step walk-through right inside the app.

#### ● CUSTOM FUNCTIONS

Make the HA7 work for you by customizing preferences for a more personalized experience.

#### ● DOOR CONTROL

Features like partial open, hold open, push & go, power assist, and stop on stall are all at your fingertips.

#### ● MULTI-PLATFORM ACCESSIBILITY

Available through both the Apple and Google Play stores means more control for more people.



low energy



app controlled



one-hour install



push & go



ADA



Ditec HA8 in clear with push arm



Ditec HA8 in bronze with pull arm

### DITEC HA8-SP STANDARD PROFILE LOW ENERGY OPERATOR

HA8-SP is the standard profile low-energy operator that works in every application including high-traffic and exterior. The standard profile can be installed in hospitals, retail stores, schools, airports, convention centers, industrial buildings, and offices.



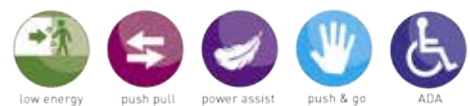
Ditec HA9 in bronze with pull arm



Ditec HA9 in clear with push arm

### DITEC HA9 FULL FEATURED LOW ENERGY OPERATOR

HA9 is a low-energy operator loaded with features while offering the same quiet, dependable operation you've come to expect in a low-profile header size. The HA9 is perfect for high-traffic locations including schools, hospitals, retail stores, airports, convention centers, industrial buildings, and offices.

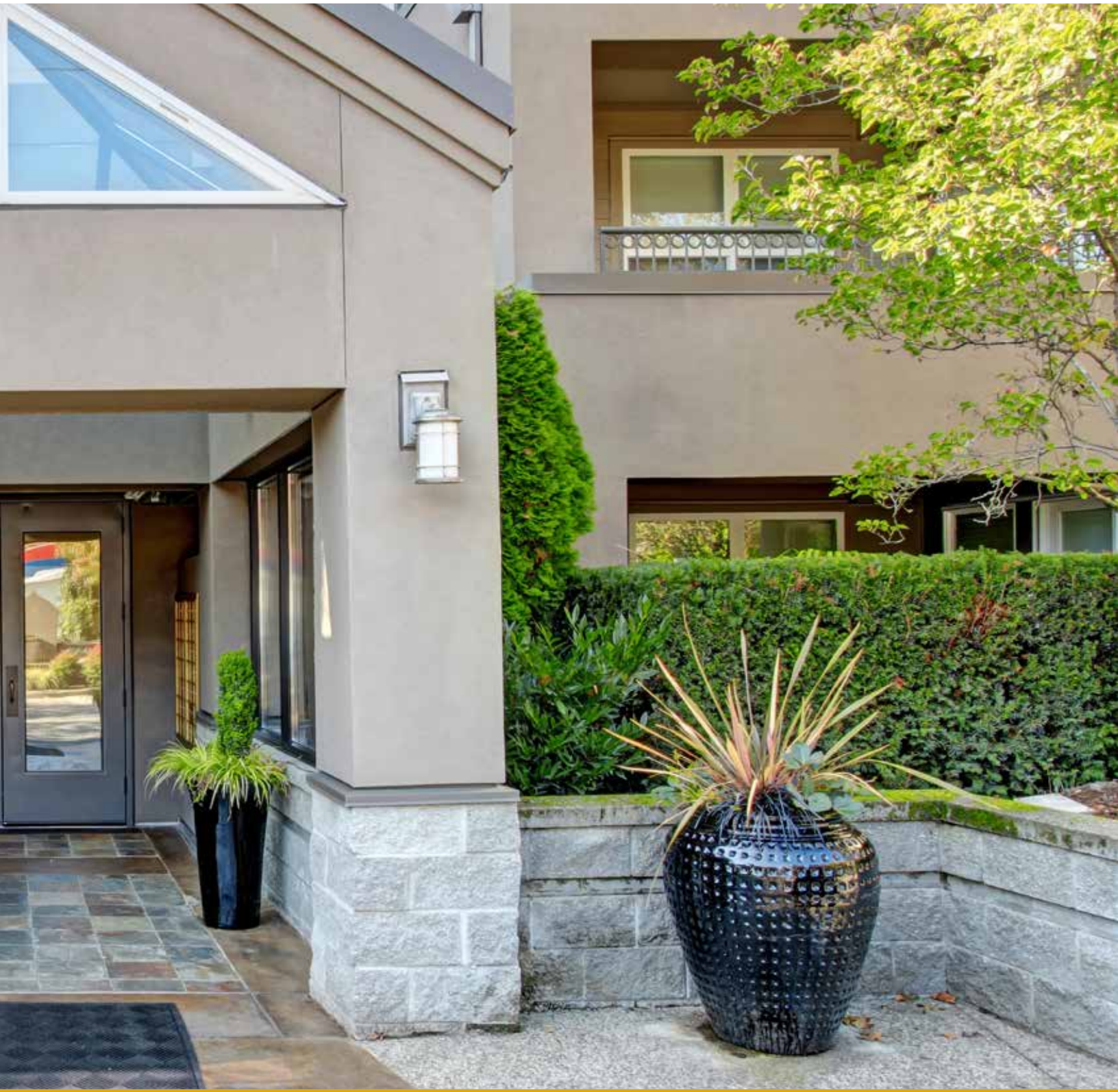




APARTMENTS

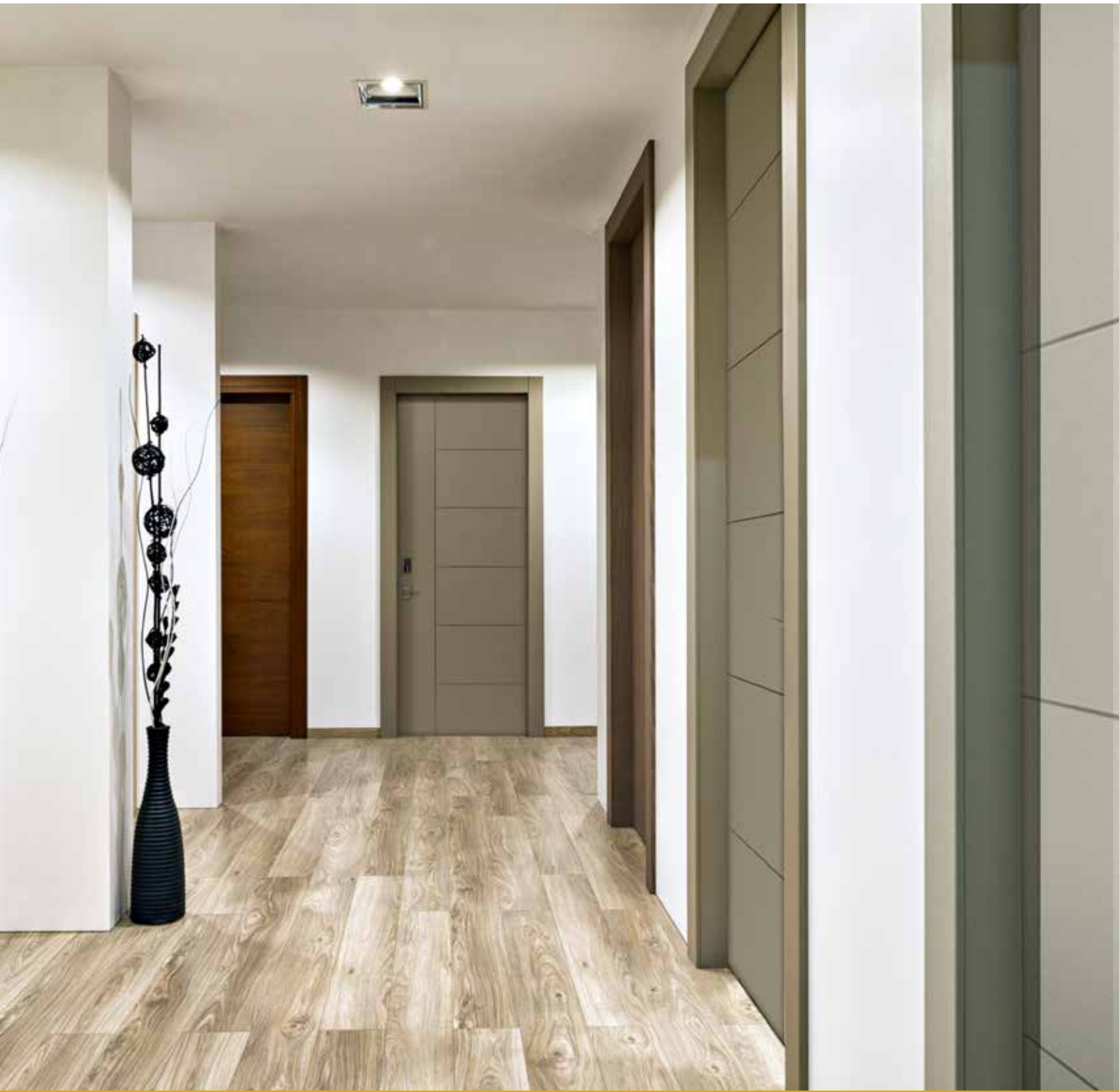
CONDOS





HOTELS

ASSISTED LIVING



SUITE ENTRY

FIRE RATED

## MOULDED PANEL DOORS



The Masonite Collection of doors feature a smooth primed product ready for painting. Composite material provides a highly durable product at great value and a timeless look for years to come.



Carrara  
CARR



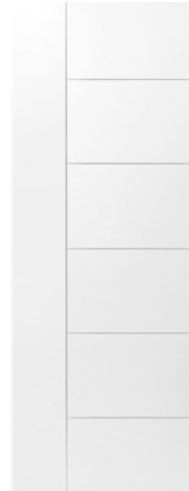
6 Panel  
COL



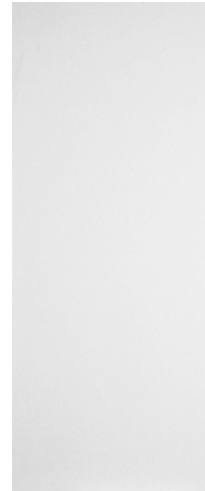
Lincoln Park  
LINC



Riverside  
RIV



Berkley  
BER



Primed Hardboard  
HP

## FIBERGLASS DOORS



Fiberglass doors feature a full length steel reinforced wood lock block offering exceptional security while allowing for a range of hardware mounting options. Fiberglass skins are resistant to dents, dings, splintering or corrosion and rigid internal structure provides sound dampening qualities. Available in either pre-pigmented maintenance-free smooth white or woodgrain textured to provide the warmth and natural beauty of wood, when stained.



SG62  
6 panel



WG68  
6 panel



SG25  
2 panel, 3/4 lite



WG25  
2 panel, 3/4 lite





# DAYBAR

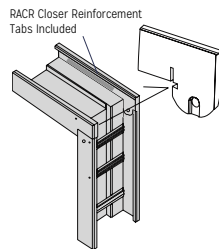
## UP TO 180 MINUTE FIRE RATED FRAMES

Usage: Interior or exterior — residential, commercial, or industrial

### EXPANDABLE EF-K FRAME SERIES

(REVERSIBLE HANDING)

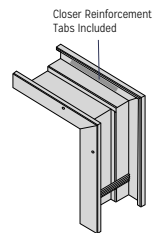
The EF-K Series are an ideal solution for commercial building applications and retrofit work on existing buildings, especially when existing wall types are unknown or vary throughout the project.



### EXPANDABLE EF FRAME SERIES

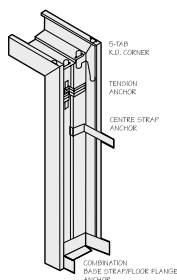
(NON-REVERSIBLE)

EF Series features a two-piece frame component, held together with a bracket system and spot welded to the frame material, allowing the jamb depth to be reduced or increased based on site conditions.



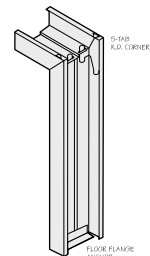
### K SERIES DRYWALL FRAMES

K Series Standard are for use with 1-3/4" steel or wood doors. They are available in a variety of standard and non-standard sizes for use in a broad range of wood or metal stud wall constructions.



### WELDED FRAMES

Welded frames are intended for installation during wall construction and are recommended for a wide variety of interior or exterior commercial, industrial, and residential applications. They are brake-formed for tight fitting mitres.





## A NEW ERA FOR MULTI-FAMILY BEGINS

Introducing the next generation of electronic access for the world of multi-family—**Schlage Control™ Smart Locks**. More than a solution for streamlining operations and boosting a property's appeal, it's a new era of answers for every door you manage.

Schlage Control Smart Deadbolts and Schlage Control Smart Interconnected Locks eliminate dealing with traditional keys, while giving residents convenient smart card and phone credentials. Open architecture design delivers the ability to manage both residence and common area doors on the same system.

Schlage Control comes standard with ENGAGE™ technology, which provides connectivity and lock management for facilities staff through the ENGAGE app. This technology also allows residents to gain access using sophisticated smart technology. From a smart phone, tablet or computer, you can quickly add users, view a history of access, get data, receive alerts, and more.





### BALCONY AND STORAGE DOORS

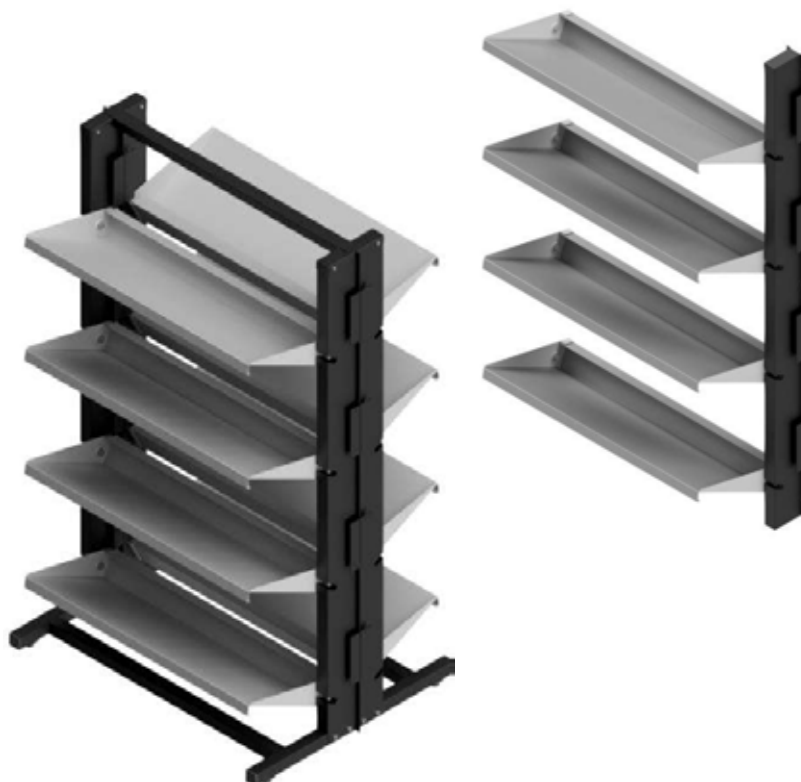
Available with either a  
steel or fiberglass door.  
Maintenance-free and factory  
finish options are available.




**Rubbermaid®**

### RUBBERMAID WIRE SHELVING

Rubbermaid carries the standard for high-quality steel epoxy-coated wire shelving. Durable and reliable, it has become the norm in most new homes. White or Satin Nickel finish.


**hadrian®**

### BOOT RACKS

Installed near entrance areas of a building, boot racks provide the perfect solution to wet, dirty, tracked-up floors and excessive floor maintenance.



### GARBAGE AND LAUNDRY CHUTES

Fire-rated standard chute doors for garbage, linen, or recycling systems.



### MAILBOXES

Vertical or horizontal, recessed wall-mounted mailboxes.



### BIKE RACKS

Available in different lengths, colours, finishes, and sizes to securely and safely store bicycles.



P

D

# PENNER EXPRESS

## Coming Soon

Online Ordering & Tracking | Quick Turn Fabrication | Direct-to-Site & Rush Delivery Options

[pennerexpress.com](http://pennerexpress.com)



## COUNTER SALES DIVISION

Penner Doors & Hardware is a trusted vendor of the leading door & hardware brands, offering a high level of knowledge and service.

Phone or visit one of our four locations in Calgary, Edmonton, Saskatoon, or Winnipeg.

New in 2022, Penner Express ecommerce.

### QUICK SHIP

A select listing of Commercial Hardware and Hollow Metal Doors and Frames are ready for pickup or delivery in a matter of hours.

### QUALITY

We sell and distribute for the leading vendors in our industry. We take pride in staying on top of the newest products and training available.





## CONTRACT DIVISION

### ABOUT US

With 35 years of outstanding service, and locations in Calgary, Edmonton, Saskatoon, and Winnipeg, Penner Doors & Hardware offers end to end solutions.

### CONSULTING AND SPECIFICATION WRITING

At the beginning of your project, we write a specification that specifies products for each opening. We ensure your opening designs meet all applicable building code requirements.

### DOOR & HARDWARE SCHEDULE

Optimal door performance begins with an accurate and complete door hardware schedule. Following a standard format the schedule specifies the type of hardware required, while complying with the budget, owner standards, quality level, security level and fire and building codes within the region of construction.

### PROJECT CO-ORDINATOR

We match our Co-ordinators with your project. Our team members are responsible for assisting with on time and on budget completion of your project.

### SHOP DRAWINGS

We provide detailed shop drawings, material, and specifications lists for your project.



## SERVICE & INSTALLATION

### THE PENNER DIFFERENCE

Penner Doors & Hardware installs and services everything we sell. Our certified technicians provide professional installation services for multiple market segments to provide owners, end users and general contractors with complete customer experience.

### WE SERVICE THE FOLLOWING:

- Automatic / Manual / Revolving / Sliding Doors
- Access Controls
- Operable Walls
- Partitions
- Rolling Steel / Fire doors
- Overhead Doors

### INSTALLATION

Our co-ordinators will quote using our in-house crews or align with the leading installers in your area. Our on call personnel may have one or more of the following certifications:

- AAADM Certification / DHI Member

#### NEW PRODUCT INSTALLATION

Let us do the work for you! Whether your project is a large multi phase building like a university dorm, or a one of a kind tenant improvement, we will install our products for you.

#### PLANNED MAINTENANCE

Avoid unpleasant surprises with planned maintenance. An annual check up into your facility can save you time, money and headaches.

#### RETROFITS & RENOVATIONS

Planning a renovation? Penner Doors & Hardware can design and install your commercial, industrial or multi-family needs.





## Industry Associations





## CONTACT

For Service & Installation, please call or email:

**1-888-871-3667**  
**[service@pennerdoors.com](mailto:service@pennerdoors.com)**

---

For orders and quick service please email:

**[orders@pennerdoors.com](mailto:orders@pennerdoors.com)**

---

For project estimates please email:

**[estimating@pennerdoors.com](mailto:estimating@pennerdoors.com)**





D

PENNER

DOORS AND  
HARDWARE

[www.pennerdoors.com](http://www.pennerdoors.com)



**CALGARY**

1101 6027 - 79th Avenue SE, Calgary, AB T2C 5P1

T: (403) 204-7694

F: (587) 393-1287

**EDMONTON**

14425 - 118 Avenue NW, Edmonton, AB T5L 2M7

T: (780) 454-9718

F: (780) 454-1611

**SASKATOON**

327 Wheeler Place, Saskatoon, SK S7P 0A4

T: (306) 986-4500

F: (306) 986-4501

**WINNIPEG**

405A De Baets Street, Winnipeg, MB R2J 3V6

T: (204) 694-4771

F: (204) 694-7130