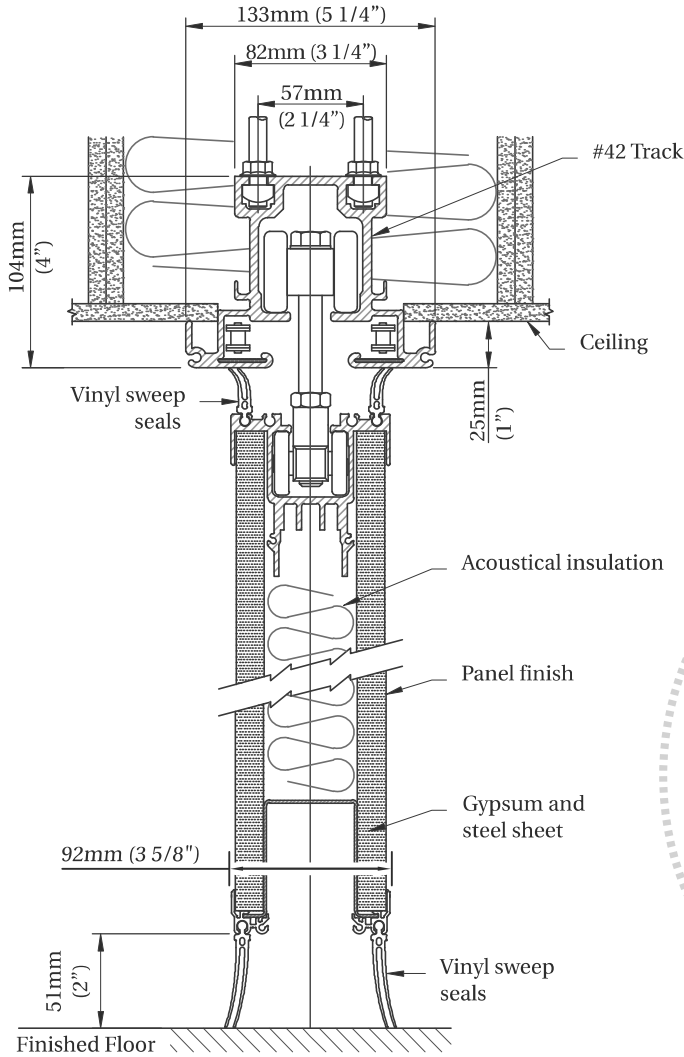


OPERABLE PARTITIONS

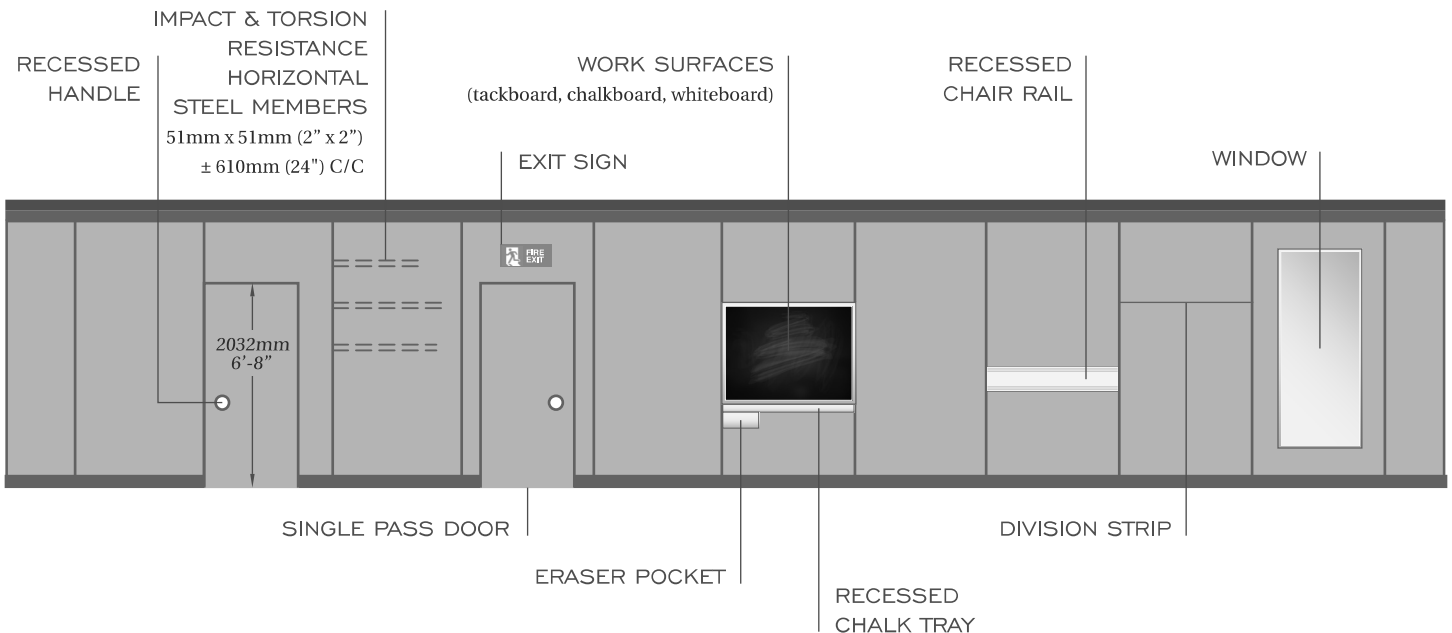
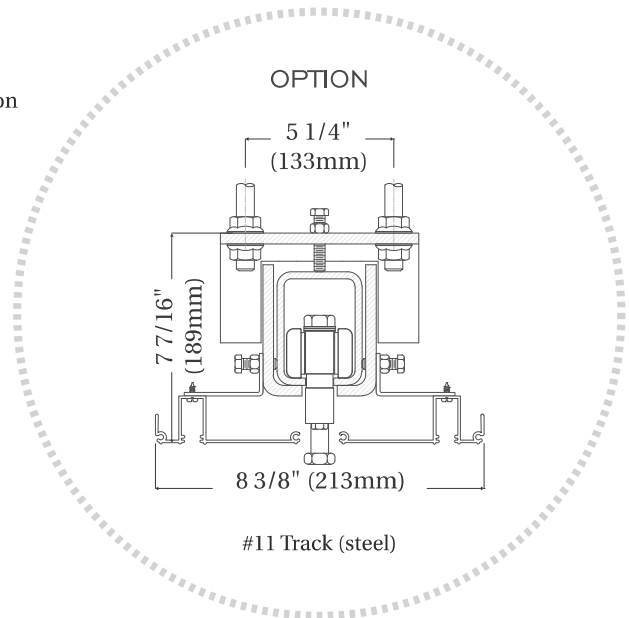
5900 SERIES - MOTORIZED PARTITIONS
 AVAILABLE STC: 43, 47, 49, 50

CORFLEX



FEATURES

- Motorized deployment
- Powder coated steel frames available in: beige, grey or black
- One floating trolley per panel eliminating the need for guide rails
- Chain drive
- Maximum height 9 220mm (30'3")
- No floor track

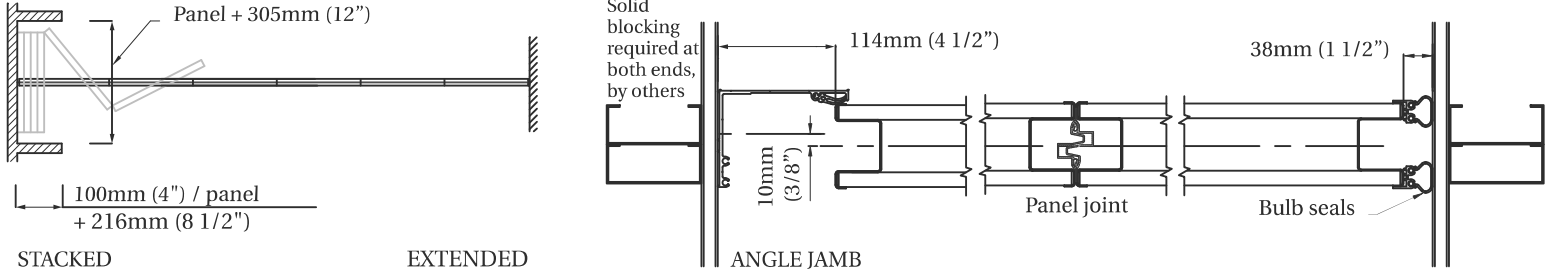


OPERABLE PARTITIONS

5900 SERIES - MOTORIZED PARTITIONS
AVAILABLE STC: 43, 47, 49, 50

CORFLEX

CLOSURE OPTIONS

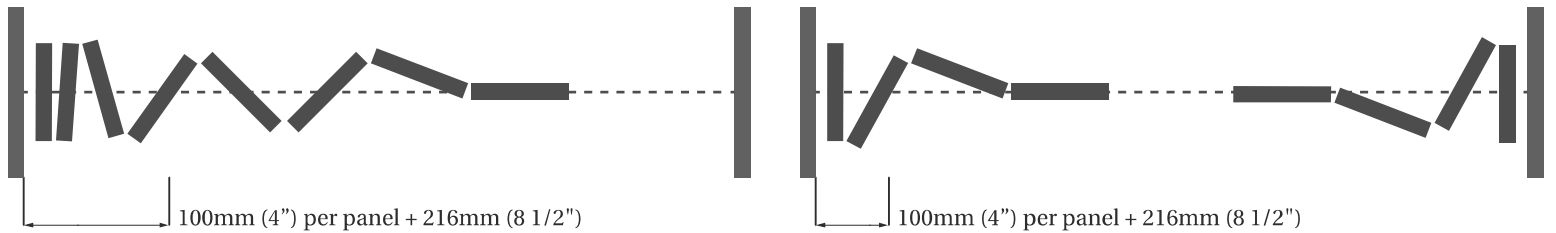


LAYOUT OPTIONS

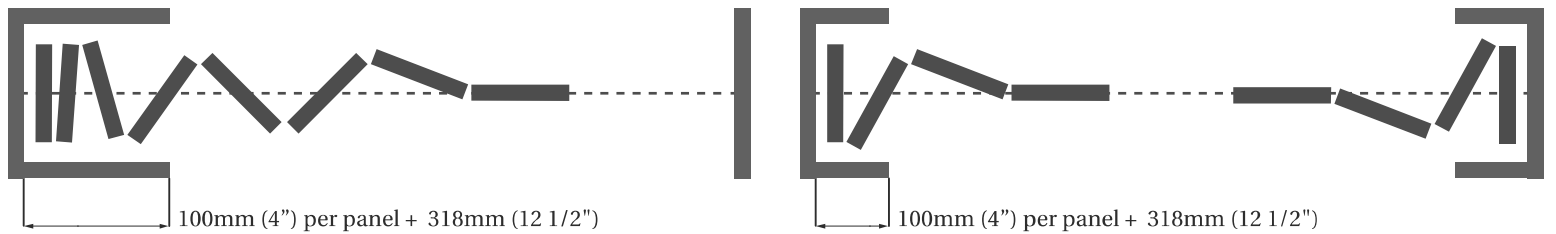
STACK FORMULAS

Maximum panel width: 1,219mm (4'0")

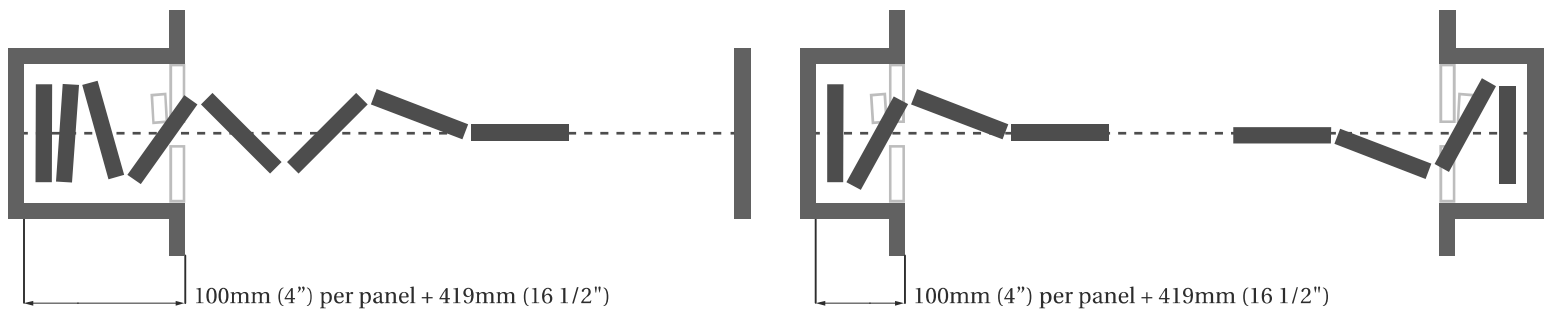
SINGLE OR BI-PARTING STACKING - NO POCKET DOOR



SINGLE OR BI-PARTING STACKING - INSIDE A POCKET



SINGLE OR BI-PARTING STACKING - INSIDE A POCKET & POCKET DOORS



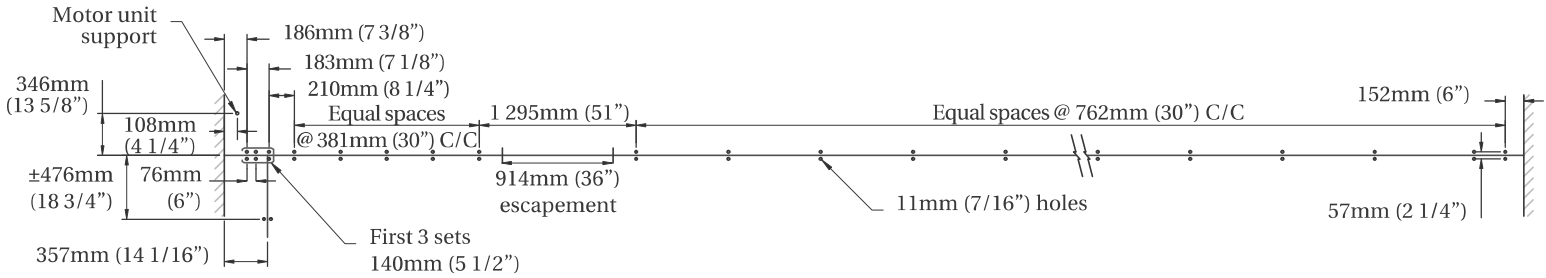
OPERABLE PARTITIONS

5900 SERIES - MOTORIZED PARTITIONS
AVAILABLE STC: 43, 47, 49, 50

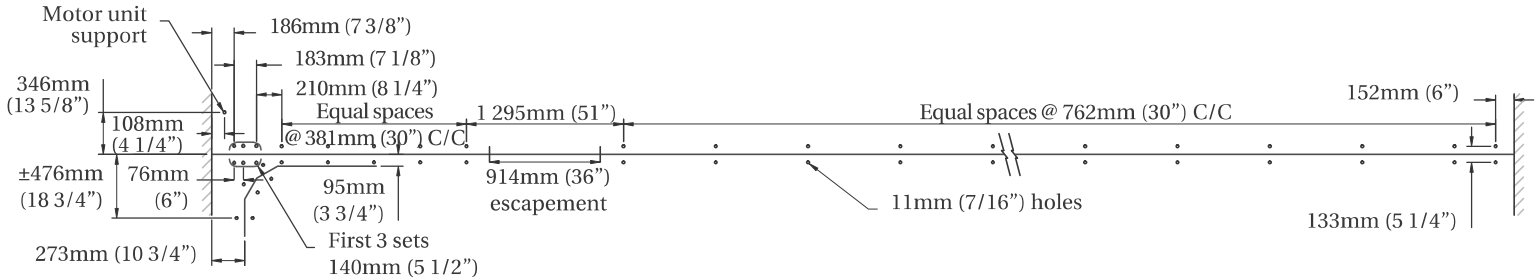
CORFLEX

TYPICAL HANGER ROD LAYOUT

BREAKER ARM

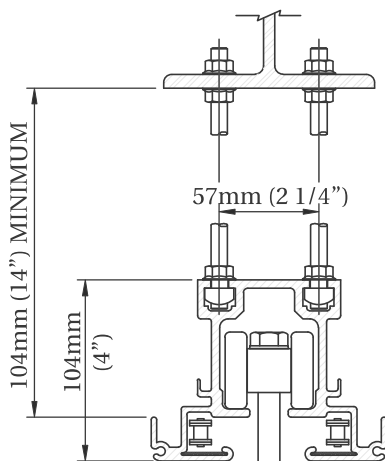


PULL AHEAD

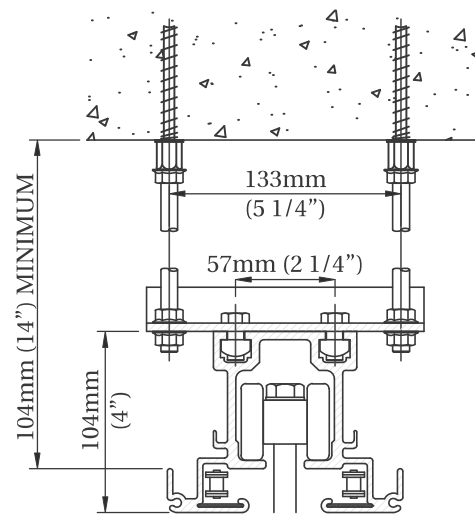


TRACK AND HANGING DETAILS

STEEL BEAM



CONCRETE SLAB



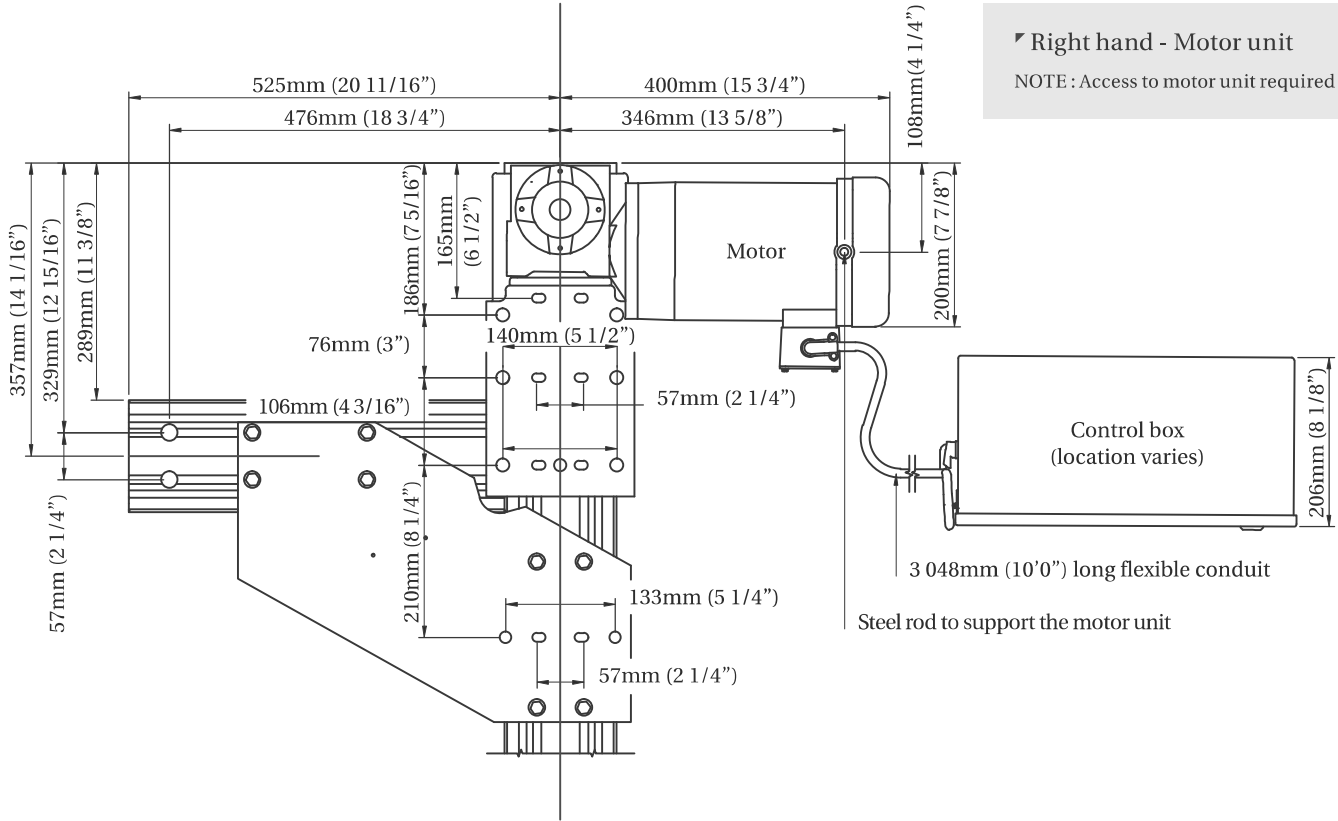
OPERABLE PARTITIONS

5900 SERIES - MOTORIZED PARTITIONS
 AVAILABLE STC: 43, 47, 49, 50

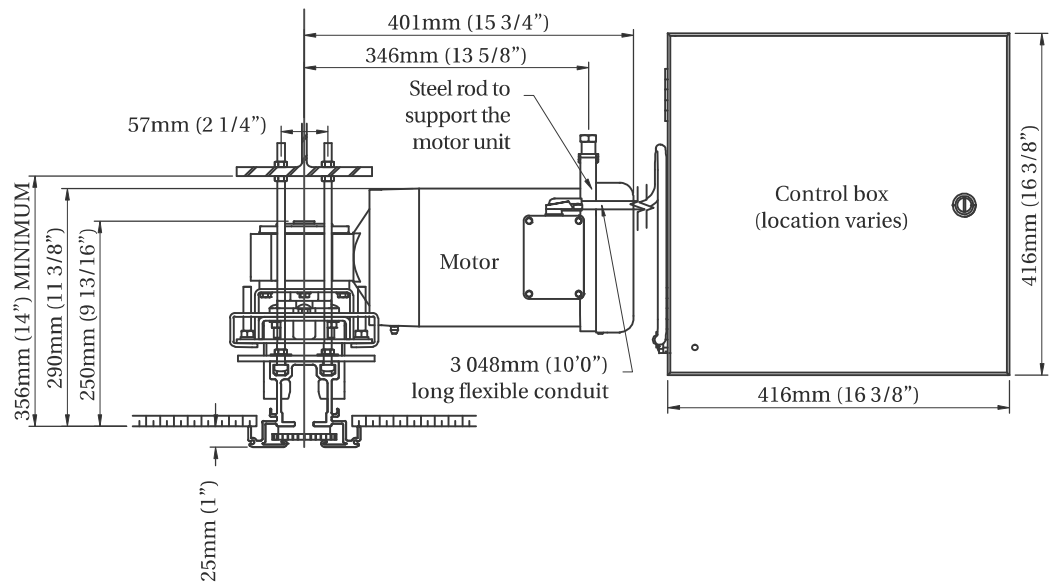
CORFLEX

MOTOR UNIT / BREAKER ARM

TOP VIEW



FRONT VIEW



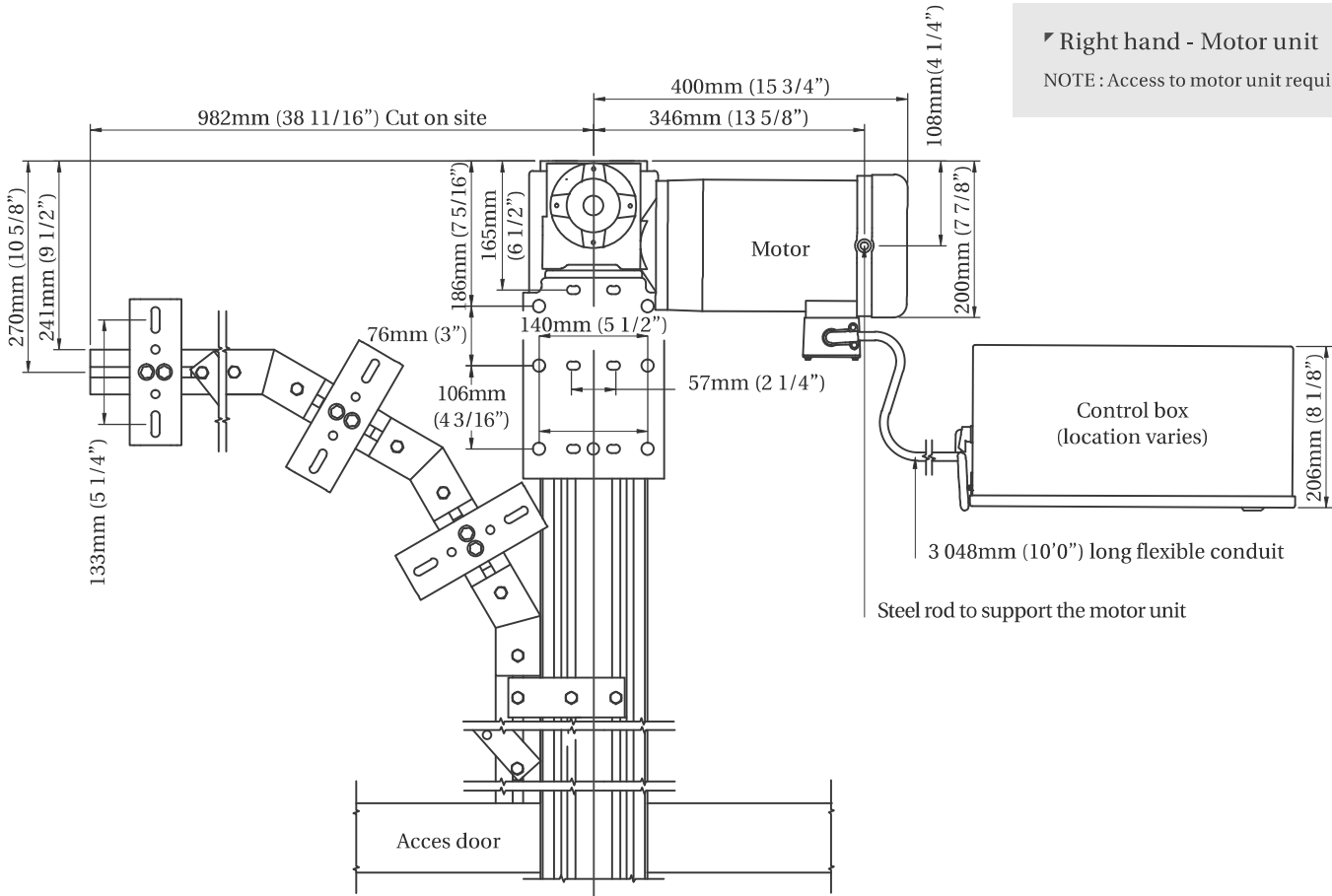
OPERABLE PARTITIONS

5900 SERIES - MOTORIZED PARTITIONS
AVAILABLE STC: 43, 47, 49, 50

CORFLEX

MOTOR UNIT / PULL AHEAD

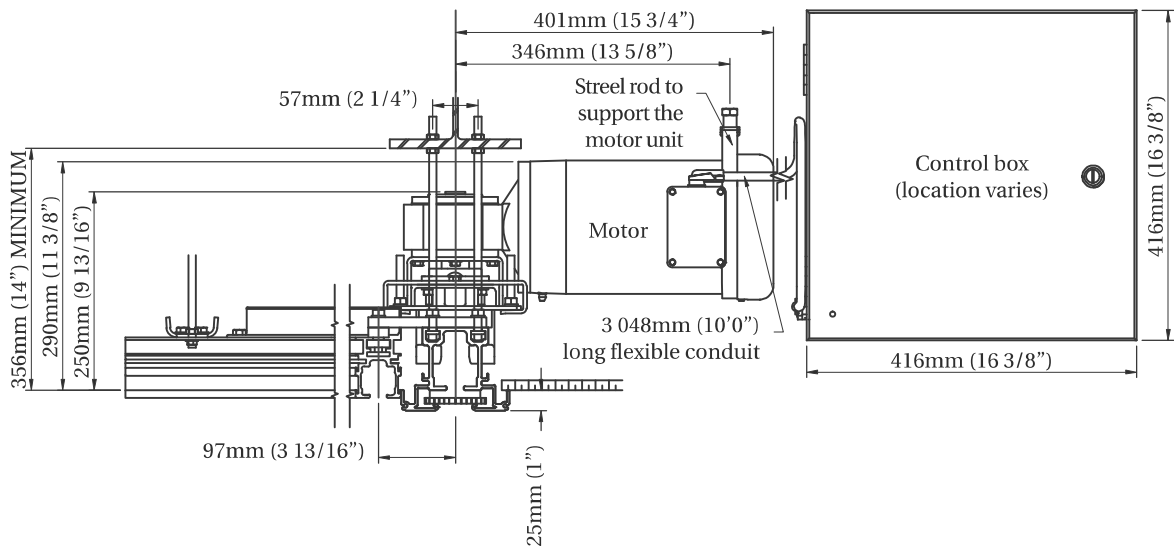
TOP VIEW



Right hand - Motor unit

NOTE: Access to motor unit required by others

FRONT VIEW



OPERABLE PARTITIONS

5900 SERIES - MOTORIZED PARTITIONS
AVAILABLE STC: 43, 47, 49, 50

CORFLEX

CONTINUOUSLY HINGED PANELS

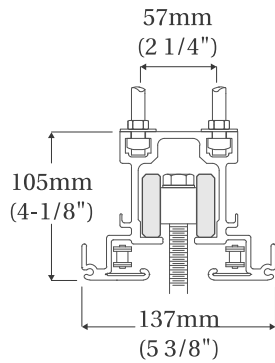
	SERIES 5900			
	43	47	49	50
STC	43	47	49	50
KG PER M ²	30,0	34,2	43,1	48,9
LB PER FT ²	6,1	7,0	8,8	10,0

TRACK AND SUSPENSIONS

#42 TRACK SYSTEM

Motorized partitions

Maximum load per panel: 409 kg (900 lb)



#111 TRACK SYSTEM

Motorized partitions

Steel Track

Maximum load per panel: 795 kg (1,750 lb)

