

## 8100-MO (5 PLY)

### PARTICLE CORE FOR MODERATE USE

- ❶ **STILES:** 1 3/16" (30 mm) clear, finger-jointed, low-density wood.
- ❷ **TOP AND BOTTOM RAILS:** 1 3/16" (30 mm) low-density wood or SCL, (LVL FSC) or laminated strand lumber (LSL), manufacturer's choice.
- ❸ **CORE:** Solid particleboard. Available NAUF/FSC (LD-2).
- ❹ **FACES:** Wood veneer (choice of face veneers; 2 ply plywood), hardboard panel or plastic laminate glued to composite crossband. Available NAUF/FSC.

**LOCK BLOCK:** Integrated.

**GLUE:** Type 1 PVA Cross-link (NAUF).

### INTERIOR USE

**WARRANTY:** 3 years.

### OPTIONS

| 20 minute fire rating, specify 8120-MO.

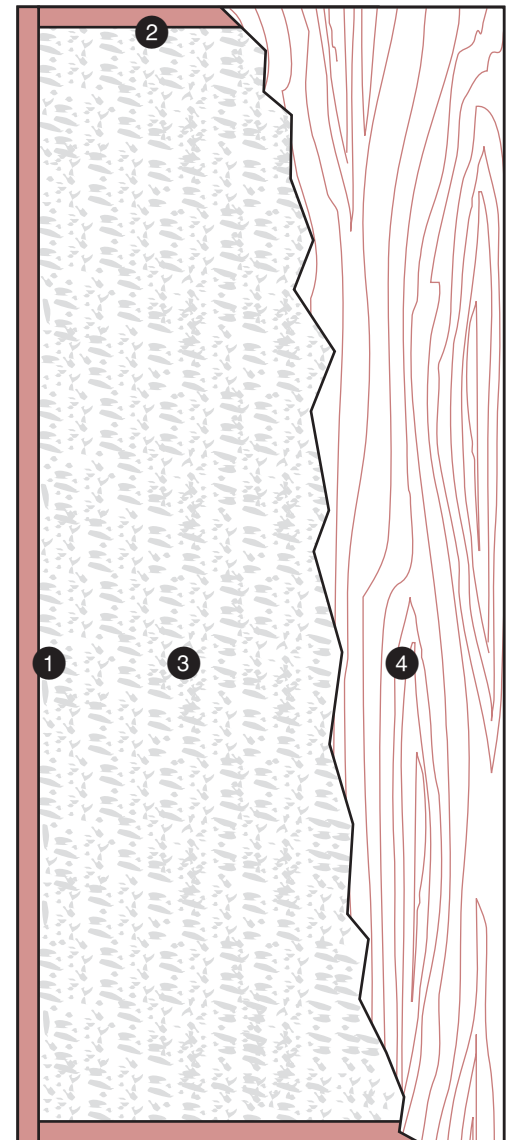
| Wood veneer glued to plywood veneer (3 ply plywood) (7 ply door).

| \* To get M.R. 7.0: **Option 1:** specify particleboard core NAUF/FSC 8100-MO NAUF/FSC) and FSC faces to optimize. **Option 2:** specify agrifibre core (8100-MO-AF) and FSC faces, only when M.R. 6.0 is also required.

| \*\* To get I.E.Q. 4.4, specify particleboard core NAUF/FSC (8100-MO NAUF/FSC) or agrifibre core (8100-MO-AF) and NAUF or NAUF/FSC faces.

### NOTE

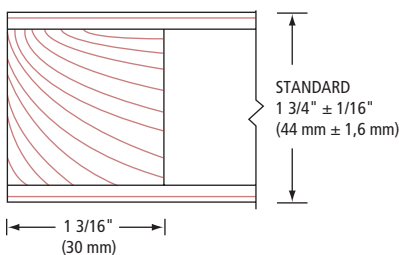
| Dimensions are nominal before trimming.



LEED ELIGIBLE CREDITS	4.1		4.2		M.R.		I.E.Q.	
	4.1	4.2	5.1	5.2	6.0	7.0	4.4 (NAUF)	
	✓	✓	✓	✓		*	**	



### ❶ STILES MO



### ❷ RAILS

