

Access Doors

June 2014



Babcock-Davis[®]

Always right there.



Babcock-Davis, a trusted name in the commercial construction industry, specializes in providing commercial building products. Architects, specifiers, general contractors, and distributors rely on the Babcock-Davis product line for a quality product with hassle-free fulfillment.

No matter your project requirements, Babcock-Davis is Always right there.



Stair Treads & Nosings
05 51 00



Roof Hatches
07 72 33



Smoke Vents
07 72 36



Access Doors
08 31 00



Floor Doors
08 31 00



Wall & Door Protection
10 26 00



Entrance Flooring Systems
12 48 13

Meet the new standard.



Babcock-Davis, the industry leader in access doors, introduces the all-new 20 gauge steel Renovation Door.

With the same durability and impact resistance as our 14 gauge Architectural Door, the Renovation Door is ideal for both renovation and new construction projects.

Both our Renovation door and our recently updated Architectural door feature our patent-pending Easy Install Tabs for painless drywall installation along with a revolutionary anti-flex frame design.

With Babcock-Davis, innovation is *Always right there.*

888.412.3726
BabcockDavis.com


Babcock-Davis[®]
Always right there.

Non-Rated

- Architectural
- Renovation
- Stainless Steel
- Recessed

pg 5-7

The non-rated access door family contains Babcock-Davis' most popular designs for standard applications.



Fire-Rated

- Insulated
- Uninsulated
- Oversized Attic
- Tile Ready
- Upward Opening

pg 8-10

No matter the degree of wall or ceiling fire protection required, Babcock-Davis has a fire-rated access door to meet your needs.



Security

- Medium
- High
- Top
- Fire-Rated

pg 10-12

When access needs to be restricted, Babcock-Davis security doors have you protected.



Specialty

- Draft Stop
- Exterior
- Lightweight
- Plastic

pg 12-14

Options

pg 15

Learn about the many options we offer for you to customize your door, including material types, flange styles, latch options, and more.

Architectural Access Door

UPDATED

The Babcock-Davis Architectural Access Door is built with architectural specification in mind. Constructed with our industry-standard 14 gauge steel door, the updated design further improves on strength and aesthetics.

- DOOR: 14 gauge cold rolled steel
- FRAME: 16 gauge cold rolled steel
- HINGE: Concealed spring button
- PAN DEPTH: 1/2"
- FINISH: Gray powder paint



BNTC1212

Features



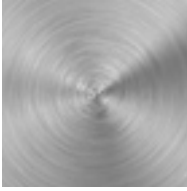
Anti-flex frame

Screws are inserted through our patent-pending Easy Install Tabs, firmly fitting the door to the wall without flexing the frame.



Painless installation

When mounting screws are not required, quickly and easily install your new panel by bending our patent-pending Easy Install Tabs over the drywall.



Industry-leading strength

With its new pan-style design, our 14 gauge door is stronger than ever.

CUSTOM SIZING



BN FLANGE LATCH WIDTH X HEIGHT OPTIONS

| FLANGE | |
|--------|----------------|
| T | 1" Flange |
| W | Drywall bead |
| P | Plaster casing |

| LATCH | |
|-------|----------------------------|
| C | Screwdriver cam latch |
| L | Key operated cam latch |
| M | Mortise lock (1-1/8") prep |

| STANDARD SIZES (WIDTH & HEIGHT) | | | | |
|---------------------------------|-----------|-----------|-----------|-----------|
| 6" x 6" | 12" x 24" | 18" x 24" | 24" x 30" | 32" x 32" |
| 8" x 8" | 14" x 14" | 20" x 30" | 24" x 36" | 36" x 36" |
| 10" x 10" | 16" x 16" | 22" x 22" | 24" x 48" | 36" x 48" |
| 12" x 12" | 16" x 20" | 22" x 30" | 30" x 30" | |
| 12" x 18" | 18" x 18" | 24" x 24" | 30" x 36" | |

| OPTIONS | |
|---------|-------------------------|
| B | Bonderized / galvanized |
| G | Gasketing |
| M | Masonry anchors |

Custom sizes are available. Rough opening is door size + 1/4".

Renovation Access Door

The Babcock-Davis Renovation Access Door is a new alternative to the Architectural Door (pg 5). The panel features an industry-leading design to provide superior durability and functionality.

- DOOR: 20 gauge cold rolled steel
- FRAME: 20 gauge cold rolled steel
- HINGE: Concealed spring button
- PAN DEPTH: 1/2"
- FINISH: Gray powder paint

Features



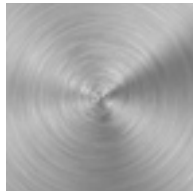
Anti-flex frame

Screws are inserted through our patent-pending Easy Install Tabs, firmly fitting the door to the wall without flexing the frame.



Painless installation

When mounting screws are not required, quickly and easily install your new panel by bending our patent-pending Easy Install Tabs over the drywall.



A lighter gauge alternative

With all of the same features as the Babcock-Davis Architectural Access Door (pg 5), the Renovation Door is a perfect compliment for applications where a lighter material gauge is acceptable.



BETC1212

CUSTOM SIZING



BE FLANGE LATCH WIDTH X HEIGHT OPTIONS

| FLANGE | |
|--------|--------------|
| T | 1" Flange |
| W | Drywall bead |

| LATCH | |
|-------|------------------------|
| C | Screwdriver cam latch |
| L | Key operated cam latch |

| STANDARD SIZES (WIDTH & HEIGHT) | | | | |
|---------------------------------|-----------|-----------|-----------|-----------|
| 6" x 6" | 12" x 24" | 18" x 24" | 24" x 30" | 32" x 32" |
| 8" x 8" | 14" x 14" | 20" x 30" | 24" x 36" | 36" x 36" |
| 10" x 10" | 16" x 16" | 22" x 22" | 24" x 48" | |
| 12" x 12" | 16" x 20" | 22" x 30" | 30" x 30" | |
| 12" x 18" | 18" x 18" | 24" x 24" | 30" x 36" | |

| OPTIONS | |
|---------|-------------------------|
| B | Bonderized / galvanized |
| G | Gasketing |

Custom sizes are available. Rough opening is door size + 1/4".

Stainless Steel Access Door

DOOR: 16 gauge T304 stainless steel
 FRAME: 16 gauge T304 stainless steel
 FLANGE: 1"
 HINGE: Stainless steel concealed pin
 PAN DEPTH: 1/2"
 FINISH: #4 Satin polish

CUSTOM SIZING



BPTL1212S

BPT X **S**

| LATCH | |
|-------|----------------------------|
| C | Screwdriver cam latch |
| L | Key operated cam latch |
| M | Mortise lock (1-1/8") prep |

| STANDARD SIZES (WIDTH & HEIGHT) | | | | |
|---------------------------------|-----------|-----------|-----------|-----------|
| 6" x 6" | 12" x 16" | 14" x 24" | 18" x 18" | 20" x 30" |
| 8" x 8" | 12" x 18" | 15" x 15" | 18" x 24" | 22" x 22" |
| 8" x 12" | 12" x 24" | 16" x 16" | 18" x 36" | 22" x 30" |
| 10" x 10" | 14" x 14" | 16" x 20" | 20" x 20" | 24" x 24" |
| 12" x 12" | 14" x 20" | 16" x 24" | 20" x 24" | |

| OPTIONS | |
|---------|-----------|
| G | Gasketing |

Custom sizes are available. Rough opening is door size + 1/4".

Recessed Access Door

DOOR: 16 gauge cold rolled steel
 FRAME: 16 gauge cold rolled steel
 HINGE: Concealed pivoting rod
 PAN DEPTH: 5/8"
 FINISH: Gray powder paint

CUSTOM SIZING



BRWC1212

BR X

| FLANGE | |
|--------|----------------|
| A | No flange |
| W | Drywall bead |
| P | Plaster casing |

| LATCH | |
|-------|----------------------------|
| C | Screwdriver cam latch |
| L | Key operated cam latch |
| M | Mortise lock (1-1/8") prep |

| STANDARD SIZES (WIDTH & HEIGHT) | | |
|---------------------------------|-------------|-------------|
| 8" x 8" | 18" x 18" | 24" x 30" * |
| 12" x 12" | 20" x 30" * | 24" x 36" * |
| 16" x 16" | 24" x 24" * | |

| OPTIONS | |
|---------|-------------------------|
| B | Bonderized / galvanized |
| G | Gasketing |
| S | T304 Stainless steel |

Custom sizes are available. Rough opening is door size + 1/4".
 * Horizontal applications only.

Insulated Access Door

DOOR: 20 gauge cold rolled steel
 FRAME: 16 gauge cold rolled steel
 HINGE: IT: Flush continuous piano
 IW/IP: Concealed pin
 FINISH: Gray powder paint
 INSULATION: 2" thick fire rated mineral fiber
 CERTIFICATION: UL listed "B" label for 1-1/2 hrs (vertical)
 Warnock-Hersey listed for 3 hrs (horizontal)

FIRE-RATED 

CUSTOM SIZING 

UL LISTED 

WARNOCK-HERSEY LISTED 



BITK1212

BI

| FLANGE |
|--------|
| |

| LATCH |
|-------|
| |

| WIDTH |
|-------|
| |

 X

| HEIGHT |
|--------|
| |

| OPTIONS |
|---------|
| |

| FLANGE | |
|--------|----------------|
| T | 1" Flange |
| W | Drywall bead |
| P | Plaster casing |

| LATCH | |
|-------|--|
| K | Knurled knob / key operated latch bolt |
| M | Mortise lock (1-1/8") prep |

| STANDARD SIZES (WIDTH & HEIGHT) | | | | |
|---------------------------------|-----------|-----------|-------------|-------------|
| 8" x 8" | 14" x 14" | 22" x 22" | 24" x 36" | 36" x 48" * |
| 10" x 10" | 16" x 16" | 22" x 30" | 24" x 48" * | 48" x 48" * |
| 12" x 12" | 18" x 18" | 22" x 36" | 30" x 30" * | |
| 12" x 18" | 18" x 24" | 24" x 24" | 32" x 32" * | |
| 12" x 24" | 20" x 30" | 24" x 30" | 36" x 36" * | |

| OPTIONS | |
|---------|-------------------------|
| B | Bonderized / galvanized |
| G | Gasketing |
| M | Masonry anchors |
| S | T304 Stainless steel |

Custom sizes are available. Rough opening is door size + 1/4".
 * Vertical applications only.

Uninsulated Access Door

DOOR: 14 gauge cold rolled steel
 FRAME: 16 gauge cold rolled steel
 HINGE: UT: Flush continuous piano
 UW/UP: Concealed pin
 FINISH: Gray powder paint
 CERTIFICATION: UL listed "B" label for 1-1/2 hrs

FIRE-RATED 

VERTICAL ONLY 

CUSTOM SIZING 

UL LISTED 



BUTK1212

BU

| FLANGE |
|--------|
| |

| LATCH |
|-------|
| |

| WIDTH |
|-------|
| |

 X

| HEIGHT |
|--------|
| |

| OPTIONS |
|---------|
| |

| FLANGE | |
|--------|----------------|
| T | 1" Flange |
| W | Drywall bead |
| P | Plaster casing |

| LATCH | |
|-------|--|
| K | Knurled knob / key operated latch bolt |
| M | Mortise lock (1-1/8") prep |

| STANDARD SIZES (WIDTH & HEIGHT) | | | |
|---------------------------------|-----------|-----------|-----------|
| 8" x 8" | 16" x 16" | 22" x 36" | 32" x 32" |
| 10" x 10" | 18" x 18" | 24" x 24" | 36" x 36" |
| 12" x 12" | 18" x 24" | 24" x 30" | 36" x 48" |
| 12" x 18" | 20" x 30" | 24" x 36" | |
| 12" x 24" | 22" x 22" | 24" x 48" | |
| 14" x 14" | 22" x 30" | 30" x 30" | |

| OPTIONS | |
|---------|-------------------------|
| B | Bonderized / galvanized |
| G | Gasketing |
| M | Masonry anchors |
| S | T304 Stainless steel |

Custom sizes are available. Rough opening is door size + 1/4".

Oversized Attic Access Door

- DOOR: 18 gauge bonderized steel
 FRAME: 16 gauge bonderized steel
 HINGE: Concealed continuous rod
 LATCH: 1/4" Allen head key Gray
 FINISH: powder paint
 INSULATION: 1-1/2" non-combustible, high temperature
 CERTIFICATION: Warnock-Hersey listed for 2 hrs (standard)
 Warnock-Hersey listed for 3 hrs (with T option)



BFRD3648DW

BFRD

WIDTH x HEIGHT OPTIONS

| STANDARD SIZES (WIDTH & HEIGHT) | | |
|---------------------------------|-----------|-----------|
| 36" x 60" | 40" x 60" | 48" x 60" |

| OPTIONS | | | |
|---------|----------------------------|---|---------------------|
| D | Double door | T | 3-Hour rated |
| M | Mortise lock (1-1/8") prep | C | Ceiling application |
| S | T304 Stainless steel | W | Wall application |

Custom sizes are available. Rough opening is door size.

Tile Ready Access Door

- DOOR: 14 gauge bonderized/galvanized steel
 FRAME: 16 gauge bonderized/galvanized steel
 HINGE: Cabinet type
 FINISH: None
 CERTIFICATION: UL listed "B" label for 1-1/2 hrs



BRUTK1212

BRU

FLANGE LATCH WIDTH x HEIGHT MATERIAL

| FLANGE | |
|--------|--------------|
| T | 1" Flange |
| W | Drywall bead |

| LATCH | |
|-------|--|
| K | Knurled knob / key operated latch bolt |
| M | Mortise lock (1-1/8") prep |

| STANDARD SIZES (WIDTH & HEIGHT) | | |
|---------------------------------|-----------|-----------|
| 8" x 8" | 16" x 16" | 24" x 24" |
| 12" x 12" | 18" x 18" | |

| MATERIAL | |
|----------|-------------------------|
| B | Bonderized / galvanized |
| S | T304 Stainless steel |

Custom sizes are available. Rough opening is door size + 1/4".

Upward Opening Access Door

DOOR: 18 gauge cold rolled steel
 FRAME: 16 gauge cold rolled steel
 HINGE: Concealed continuous piano
 LATCH: 1/4" Allen head key
 FINISH: Gray powder paint
 INSULATION: Non-combustible, high temperature
 CERTIFICATION: Warnock-Hersey listed for 2 hrs

FIRE-RATED



HORIZONTAL ONLY



CUSTOM SIZING



BIUA2436

BIUA or BFRU

| WIDTH | | HEIGHT | | OPTIONS | |
|-------|--|--------|--|---------|--|
|-------|--|--------|--|---------|--|

| STANDARD SIZES (WIDTH & HEIGHT) | | |
|---------------------------------|-----------|-----------|
| 12" x 12" | 18" x 18" | 22" x 36" |
| 14" x 14" | 22" x 22" | 24" x 36" |

| STANDARD SIZES (WIDTH & HEIGHT) | | |
|---------------------------------|-----------|-----------|
| 24" x 48" | 30" x 36" | 32" x 32" |
| 30" x 30" | 30" x 48" | 36" x 36" |

| OPTIONS | |
|---------|-------------------------|
| B | Bonderized / galvanized |
| G | Gasketing |
| S | T304 Stainless steel |

Custom sizes are available. Use IUA for access doors 24" x 36" or smaller; FRU for larger doors. Rough opening is door size + 1/4".

Medium Security Access Door

DOOR: 12 gauge cold rolled steel
 FRAME: 12 gauge cold rolled steel
 HINGE: Concealed continuous piano
 FINISH: Gray powder paint

SECURITY



CUSTOM SIZING



BMTM1818

BM

| FLANGE | | LATCH | | WIDTH | | HEIGHT | | OPTIONS | |
|--------|--|-------|--|-------|--|--------|--|---------|--|
|--------|--|-------|--|-------|--|--------|--|---------|--|

| FLANGE | |
|--------|----------------|
| T | 1" Flange |
| W | Drywall bead |
| P | Plaster casing |

| LATCH | |
|-------|-------------------------------------|
| M | Mortise lock (1-1/8" prep) |
| P | Pinned allen head cam latch(es) |
| S | Pinned allen head security screw(s) |

| STANDARD SIZES (WIDTH & HEIGHT) | | | |
|---------------------------------|-----------|-----------|-----------|
| 8" x 8" | 16" x 16" | 22" x 30" | 30" x 36" |
| 10" x 10" | 16" x 20" | 24" x 24" | 32" x 32" |
| 12" x 12" | 18" x 18" | 24" x 30" | 36" x 36" |
| 12" x 18" | 18" x 24" | 24" x 36" | 36" x 48" |
| 12" x 24" | 20" x 30" | 24" x 48" | |
| 14" x 14" | 22" x 22" | 30" x 30" | |

| OPTIONS | |
|---------|-------------------------|
| B | Bonderized / galvanized |
| G | Gasketing |
| M | Masonry anchors |
| S | T304 Stainless steel |

Custom sizes are available. Rough opening is door size + 1/4".

High Security Access Door

DOOR: 10 gauge cold rolled steel
 FRAME: 2" x 2" x 3/16" steel angle
 HINGE: Surface-mounted heavy-duty butt
 FINISH: Gray powder paint

SECURITY 

CUSTOM SIZING 



BHSD2424

BHS

| LATCH | WIDTH | X | HEIGHT | OPTIONS |
|-------|-------|---|--------|---------|
| | | | | |

| LATCH | |
|-------|----------------------------|
| D | Detention lock prep |
| M | Mortise lock (1-1/8") prep |
| S | Security screws |

| STANDARD SIZES (WIDTH & HEIGHT) | | | | |
|---------------------------------|-----------|-------------|-------------|--|
| 12" x 12" | 18" x 18" | 24" x 24" | 24" x 40" * | |
| 16" x 16" | 22" x 30" | 24" x 36" * | 24" x 48" * | |

*Custom sizes are available. Rough opening is door size + 3/4".
 * Recommended for vertical surfaces only.*

| OPTIONS | |
|---------|----------------------|
| G | Gasketing |
| M | Masonry Anchors |
| S | T304 Stainless Steel |

Top Security Access Door

DOOR: 7 gauge hot rolled steel
 FRAME: 2" x 3" x 3/16" steel angle
 HINGE: Surface-mounted heavy-duty butt
 PAN DEPTH: 1-1/4"
 FINISH: Gray powder paint

SECURITY 

VERTICAL ONLY 

CUSTOM SIZING 



BTSD3636

BTS

| LATCH | WIDTH | X | HEIGHT | OPTIONS |
|-------|-------|---|--------|---------|
| | | | | |

| LATCH | |
|-------|----------------------------|
| D | Detention lock prep |
| M | Mortise lock (1-1/8") prep |

| STANDARD SIZES (WIDTH & HEIGHT) | | | | |
|---------------------------------|-----------|-------------|-------------|--|
| 12" x 12" | 18" x 18" | 24" x 24" | 24" x 40" * | |
| 16" x 16" | 22" x 30" | 24" x 36" * | 24" x 48" * | |

*Custom sizes are available. Rough opening is door size + 1/4".
 * Recommended for vertical surfaces only.*

| OPTIONS | |
|---------|----------------------|
| G | Gasketing |
| M | Masonry anchors |
| S | T304 Stainless steel |

Fire-Rated Security Access Door

DOOR: 14 gauge cold rolled steel
 FRAME: 16 gauge cold rolled steel
 HINGE: ST: Flush continuous piano
 SW/SP: Concealed pin
 FINISH: Gray powder paint
 INSULATION: 2" thick fire rated mineral fiber
 CERTIFICATION: UL listed "B" label for 1-1/2 hrs

- FIRE-RATED 
- SECURITY 
- VERTICAL ONLY 
- CUSTOM SIZING 
- 



BSTK1212

BS X

| FLANGE | |
|--------|----------------|
| T | 1" Flange |
| W | Drywall bead |
| P | Plaster casing |

| LATCH | |
|-------|--|
| K | Knurled knob / key operated latch bolt |
| M | Mortise lock (1-1/8") prep |

| STANDARD SIZES (WIDTH & HEIGHT) | | |
|---------------------------------|-----------|-----------|
| 12" x 12" | 22" x 30" | 24" x 40" |
| 16" x 16" | 24" x 24" | 24" x 48" |
| 18" x 18" | 24" x 36" | |

| OPTIONS | |
|---------|-------------------------|
| B | Bonderized / galvanized |
| G | Gasketing |
| M | Masonry anchors |
| S | T304 Stainless steel |

Custom sizes are available. Rough opening is door size + 1/4".

Draft Stop Access Door

DOOR: 14 gauge cold rolled steel (self-closing)
 FRAME: 16 gauge cold rolled steel
 HINGE: Flush continuous piano
 FINISH: Gray powder paint

- VERTICAL ONLY 
- CUSTOM SIZING 



BDTK2230

BD X

| FLANGE | |
|--------|--------------|
| T | 1" Flange |
| W | Drywall bead |

| LATCH | |
|-------|--|
| K | Knurled knob / key operated latch bolt |
| M | Mortise lock (1-1/8") prep |

| STANDARD SIZES (WIDTH & HEIGHT) | | |
|---------------------------------|-----------|-----------|
| 22" x 36" | 24" x 60" | 36" x 36" |
| 24" x 36" | 30" x 30" | 36" x 48" |
| 24" x 48" | 30" x 36" | |

| OPTIONS | |
|---------|-------------------------|
| B | Bonderized / galvanized |
| G | Gasketing |
| S | T304 Stainless steel |

Custom sizes are available. Rough opening is door size + 1/4".

The Babcock-Davis Exterior Access Door provides efficient access from the exterior of your building without compromising security or weather resistance.

- DOOR: 24 gauge galvanized steel
- FRAME: .080" 6063-T5 extruded aluminum
- HINGE: Stainless steel continuous piano
- FINISH: Door: Paint grip finish
Frame: Mill
- INSULATION: 2-1/4" polyurethane with 11 R-value
- GASKETING: EPDM self-adhesive, continuous gasket



BXTM1212

Features



Compatible with building key

With the mortise lock prep option, you can match the mortise cylinder to that of your building's other access points.



Insulated for temperature control

With 2-1/4" polyurethane insulation, the Babcock-Davis Exterior Door is constructed to protect your building from the harshest climates.



Tested for air & water penetration

Independent lab testing for air leakage per ASTM E 283 and water leakage per ASTM E 331-88 assures the best protection against the elements.

CUSTOM SIZING

BXT

| LATCH |
|-------|
| |

 X

| WIDTH |
|-------|
| |

 X

| HEIGHT |
|--------|
| |

| OPTIONS |
|---------|
| |

| LATCH | |
|----------------------|------------------------------|
| A Non-locking handle | P Padlock hasp |
| D Locking D-ring | M Mortise lock (1-1/8") prep |
| L Locking handle | C Three point latch |
| T 1/4 Turn latch | |

| STANDARD SIZES (WIDTH & HEIGHT) | | | |
|---------------------------------|-----------|-----------|-----------|
| 8" x 8" | 16" x 16" | 20" x 30" | 24" x 30" |
| 12" x 12" | 18" x 18" | 24" x 24" | 24" x 36" |

Custom sizes are available. Rough opening is door size.

| OPTIONS | |
|---------|---------------------------|
| A | Aluminum Door |
| C | Drip Cap |
| E | Embossed Aluminum Door |
| G | Galvanized Door |
| P | Padlock Hasp |
| S | T304 Stainless Steel Door |

Lightweight Access Door

DOOR: 26 gauge pre-finished embossed galvanized steel
 FRAME: .045" 6063-T5 extruded aluminum
 HINGE: Aluminum continuous piano
 FINISH: Door skin: White embossed steel
 Frame: Clear anodized aluminum
 FLANGE: Rolled 1-5/16" wide
 INSULATION: 3/4" polystyrene with 3.8 R-value

CUSTOM SIZING



BLWT1212

BLW

| LATCH | WIDTH | X | HEIGHT | OPTIONS |
|-------|-------|---|--------|---------|
| | | | | |

| LATCH | |
|-------|------------------------|
| T | Screwdriver cam latch |
| L | Key operated cam latch |

| STANDARD SIZES (WIDTH & HEIGHT) | | | |
|---------------------------------|-----------|-------------|-------------|
| 12" x 12" | 24" x 24" | 30" x 36" | 72" x 48" * |
| 18" x 18" | 24" x 36" | 36" x 36" | |
| 22" x 30" | 24" x 48" | 48" x 48" * | |
| 22" x 36" | 30" x 30" | 60" x 48" * | |

| OPTIONS | |
|---------|-----------------------|
| A | Aluminum insert panel |
| G | Gasketing |

*Custom sizes are available. Rough opening is door size + 1/4".
 * Double door construction.*

Plastic Access Door

DOOR: 1/8" high impact styrene
 plastic removable door
 FRAME: Reversible 3/4" flange
 LATCH: Snap latches securing door
 FINISH: Texturized white finish

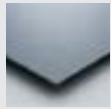
BPL

| WIDTH | X | HEIGHT |
|-------|---|--------|
| | | |

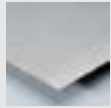
| AVAILABLE SIZES (WIDTH & HEIGHT) | | |
|----------------------------------|-----------|-----------|
| 4" x 6" | 8" x 8" | 14" x 29" |
| 6" x 9" | 14" x 14" | |



BPL0808



B Galvanized / bonderized steel
With primer coat. Use where corrosive resistance is required.



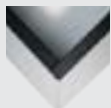
S Stainless steel type #304
Extremely resistant to corrosion. With #4 satin polish finish.



D Double leaf access panel
Recommended for easy access to large openings.



C Drip cap on frame
Directs running water away from the face of the panel.



G Gasketing
Applied to the door stops for weather resistance. Also available with UL listed smoke seal.



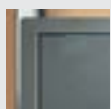
L Louvered door
Provides ventilation for special applications.



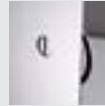
M Masonry anchors
Attached to the frame to secure the panel when installed in masonry.



H Continuous piano hinge
Provides specification compliance when required.



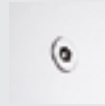
Z Concealed continuous piano hinge
Provides added security while maintaining superior aesthetics.



C Screwdriver operated cam latch
Most common. Appropriate for standard applications.



H Hex head cam latch
Requires a standard allen wrench to open the panel.



P Pinned hex head cam latch
For more secure applications – requires a special pinned allen wrench to open the panel.



S Security screw – Pinned hex head
Highest security without a lock – requires special pinned allen wrench to open the panel.



N Knurled knob cam latch
Unrestricted access – no tool required. Finger operated.



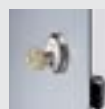
K Knurled knob/key operated latch bolt
Patented ball bearing latch bolt operated by a screw-in type knurled knob or flush key.



D Detention lock preparation
For heavy-duty detention deadbolt lock. Used in maximum security applications.



L Key operated cam lock
Provides an economical solution for controlled access when locks are required.



M Mortise cylinder lock preparation
Very secure. Matches project hardware. Accepts standard 1.125" mortise cylinder.



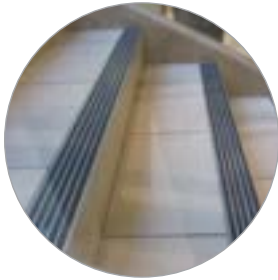
1" Flange



Drywall bead



Plaster bead



Stair Treads & Nosings
05 51 00



Roof Hatches
07 72 33



Smoke Vents
07 72 36



Access Doors
08 31 00



Floor Doors
08 31 00



Wall & Door Protection
10 26 00



Entrance Flooring Systems
12 48 13