

8500-ME (5 PLY)

PARTICLE CORE, ULTRA HEAVY-DUTY, ANTI-WARPING CONSTRUCTION FOR INTENSIVE USE

- ❶ **STILES:** 1/8" (3 mm) thick veneer, longitudinally laminated by hot pressing with type 1 structural glue, as per ASTM-D5456-93 (LVL FSC), including a 7/8" (22 mm) piece of hardwood, matched with faces, for a total width of 4 3/16" (107 mm).
- ❷ **TOP AND BOTTOM RAILS:** 1/8" (3 mm) thick veneer, longitudinally laminated by hot pressing with type 1 structural glue, as per ASTM-D5456-93 (LVL FSC), or laminated strand lumber (LSL) for a total width of 3 5/16" (85 mm).
- ❸ **CORE:** Solid particleboard. Density of 28-32 lbs per cubic foot. Complies with CSA-0188 and ANSI A208-1 standards (LD-1/LD-2). Available NAUF/FSC (LD-2).
- ❹ **FACES:** Wood veneer (choice of face veneers; 2 ply plywood), hardboard panel or plastic laminate glued to composite crossband. Available NAUF/FSC.

LOCK BLOCK: Integrated.

GLUE: Type 1 PVA Cross-link (NAUF).

INTERIOR USE

WARRANTY: LIFETIME

OPTIONS

| 20 minute fire rating, specify 8520-ME, 8520-ME NAUF/FSC or 8520-ME-AF.

| Wood veneer glued to plywood veneer (3 ply plywood) (7 ply door).

| Autonomy door available, specify 8513-ME, 8513-ME NAUF/FSC or 8513-ME-AF.

| * To get M.R. 6.0, specify agrifibre core (8500-ME-AF).

| ** To get M.R. 7.0: **Option 1:** specify particleboard core NAUF/FSC (8500-ME NAUF/FSC) and FSC faces to optimize. **Option 2:** specify agrifibre core (8500-ME-AF) and FSC faces, only when M.R. 6.0 is also required.

| *** To get I.E.Q. 4.4, specify particleboard core NAUF/FSC (8500-ME NAUF/FSC) or agrifibre core (8500-ME-AF) and NAUF or NAUF/FSC faces.

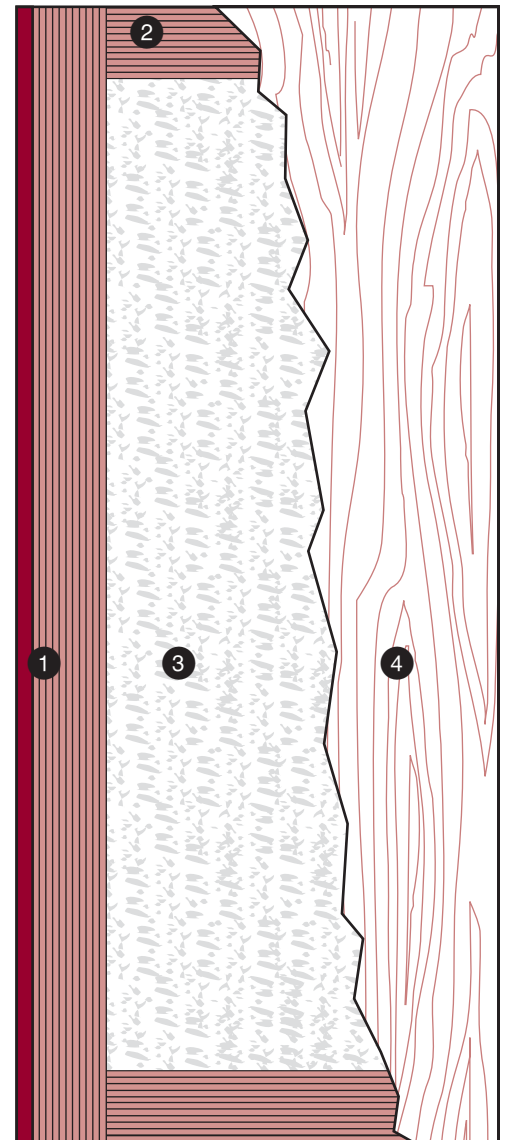
NOTE

| Dimensions are nominal before trimming.

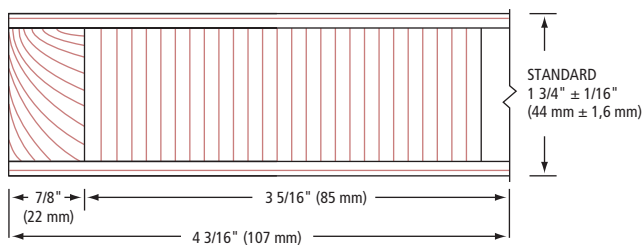


LEED ELIGIBLE CREDITS	M.R.		I.E.Q.				
	4.1	4.2	5.1	5.2	6.0	7.0	4.4 (NAUF)
			✓	✓	*	**	***

Standards meet or exceed:
A.W.S. section 9, October 1, 2009;
W.D.M.A. 1.S.1A-04
and CSA 0132.2.90



❶ STILES ME



❷ RAILS

